



EDG-4 Polyclonal Antibody

Catalog No	BYab-13205
Isotype	IgG
Reactivity	Human;Mouse;Monkey
Applications	WB;IF;ELISA
Gene Name	LPAR2
Protein Name	Lysophosphatidic acid receptor 2
Immunogen	The antiserum was produced against synthesized peptide derived from human EDG4. AA range:271-320
Specificity	EDG-4 Polyclonal Antibody detects endogenous levels of EDG-4 protein.
Formulation	Liquid in PBS containing 50% glycerol, 0.5% BSA and 0.02% sodium azide.
Source	Polyclonal, Rabbit,IgG
Purification	The antibody was affinity-purified from rabbit antiserum by affinity-chromatography using epitope-specific immunogen.
Dilution	Western Blot: 1/500 - 1/2000. Immunofluorescence: 1/200 - 1/1000. ELISA: 1/40000. Not yet tested in other applications.
Concentration	1 mg/ml
Purity	≥90%
Storage Stability	-20°C/1 year
Synonyms	LPAR2; EDG4; LPA2; Lysophosphatidic acid receptor 2; LPA receptor 2; LPA-2; Lysophosphatidic acid receptor Edg-4
Observed Band	39kD
Cell Pathway	Cell surface . Cell membrane ; Multi-pass membrane protein . Prior to LPA treatment found predominantly at the cell surface but in the presence of LPA colocalizes with RALA in the endocytic vesicles.
Tissue Specificity	Expressed most abundantly in testes and peripheral blood leukocytes with less expression in pancreas, spleen, thymus and prostate. Little or no expression in heart, brain, placenta, lung, liver, skeletal muscle, kidney, ovary, small intestine, or colon.
Function	function:Receptor for lysophosphatidic acid (LPA), a mediator of diverse cellular activities. Seems to be coupled to the G(i)/G(o), G(12)/G(13), and G(q) families of heteromeric G proteins. Plays a key role in phospholipase C-beta (PLC-beta) signaling pathway.,miscellaneous:PubMed:9525886 cDNA clone has a guanine nucleotide deletion that causes a frameshift near its C-terminal coding region. This likely reflects a somatic mutation in the ovary tumor cells from which the cDNA was isolated and may have altered the function of the encoded receptor,

Nanjing BYabscience technology Co.,Ltd



and contributed to transformation of the original ovary cells that formed a tumor.,similarity:Belongs to the G-protein coupled receptor 1 family.,subunit:Interacts with SLC9A3R2/NHERF2, MAGI3 and PLCB3.,tissue specificity:Expressed most abundantly in testes and peripheral blood leukocytes with less expression in pancreas, spleen, thymus and prost

Background

lysophosphatidic acid receptor 2(LPAR2) Homo sapiens This gene encodes a member of family I of the G protein-coupled receptors, as well as the EDG family of proteins. This protein functions as a lysophosphatidic acid (LPA) receptor and contributes to Ca²⁺ mobilization, a critical cellular response to LPA in cells, through association with Gi and Gq proteins. An alternative splice variant has been described but its full length sequence has not been determined. [provided by RefSeq, Jul 2008],

matters needing attention

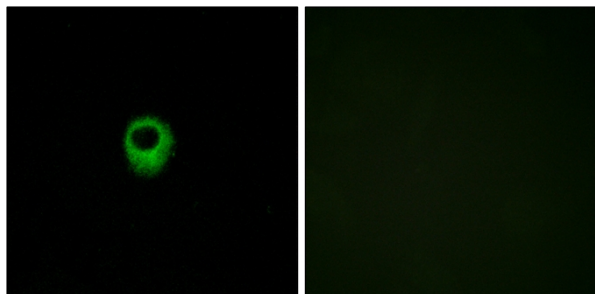
Avoid repeated freezing and thawing!

Usage suggestions

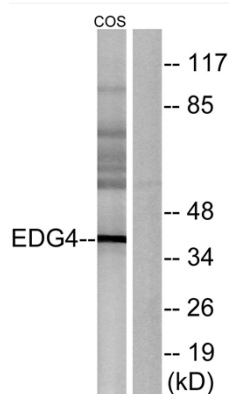
This product can be used in immunological reaction related experiments. For more information, please consult technical personnel.



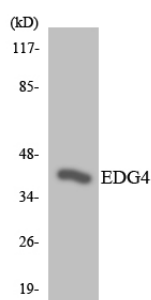
Products Images



Immunofluorescence analysis of MCF7 cells, using EDG4 Antibody. The picture on the right is blocked with the synthesized peptide.



Western blot analysis of lysates from COS7 cells, using EDG4 Antibody. The lane on the right is blocked with the synthesized peptide.



Western blot analysis of the lysates from K562 cells using EDG4 antibody.