



Frizzled-7 Polyclonal Antibody

Catalog No	BYab-13261
Isotype	IgG
Reactivity	Human;Mouse
Applications	WB;Flow Cyt;IF;ELISA
Gene Name	FZD7
Protein Name	Frizzled-7
Immunogen	The antiserum was produced against synthesized peptide derived from human FZD7. AA range:45-94
Specificity	Frizzled-7 Polyclonal Antibody detects endogenous levels of Frizzled-7 protein.
Formulation	Liquid in PBS containing 50% glycerol, 0.5% BSA and 0.02% sodium azide.
Source	Polyclonal, Rabbit,IgG
Purification	The antibody was affinity-purified from rabbit antiserum by affinity-chromatography using epitope-specific immunogen.
Dilution	WB 1:500-2000;Flow Cyt 1:50-200;IF/ICC 1:100-500;ELISA 1:5000-20000
Concentration	1 mg/ml
Purity	≥90%
Storage Stability	-20°C/1 year
Synonyms	FZD7; Frizzled-7; Fz-7; hFz7; FzE3
Observed Band	64kD
Cell Pathway	Cell membrane ; Multi-pass membrane protein . Endosome membrane ; Multi-pass membrane protein . Associated to the plasma membrane in the presence of FZD7 and phosphatidylinositol 4,5-bisphosphate (PIP2). Localized in recycling endosomes in other conditions. .
Tissue Specificity	High expression in adult skeletal muscle and fetal kidney, followed by fetal lung, adult heart, brain, and placenta. Specifically expressed in squamous cell esophageal carcinomas.
Function	domain:Lys-Thr-X-X-X-Trp motif is involved in the activation of the Wnt/beta-catenin signaling pathway.,domain:The FZ domain is involved in binding with Wnt ligands.,function:Receptor for Wnt proteins. Most of frizzled receptors are coupled to the beta-catenin canonical signaling pathway, which leads to the activation of disheveled proteins, inhibition of GSK-3 kinase, nuclear accumulation of beta-catenin and activation of Wnt target genes. A second signaling pathway involving PKC and calcium fluxes has been seen for some family members, but it is not yet clear if it represents a distinct pathway or if it can

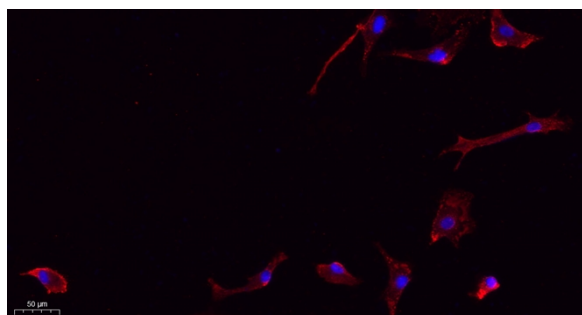
Nanjing BYabscience technology Co.,Ltd



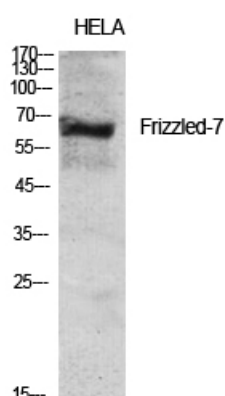
	be integrated in the canonical pathway, as PKC seems to be required for Wnt-mediated inactivation of GSK-3 kinase. Both pathways seem to involve interactions with G-proteins. May be involved in transduction and intercellular transmission of polarity information during tissue morphog
Background	frizzled class receptor 7(FZD7) Homo sapiens Members of the 'frizzled' gene family encode 7-transmembrane domain proteins that are receptors for Wnt signaling proteins. The FZD7 protein contains an N-terminal signal sequence, 10 cysteine residues typical of the cysteine-rich extracellular domain of Fz family members, 7 putative transmembrane domains, and an intracellular C-terminal tail with a PDZ domain-binding motif. FZD7 gene expression may downregulate APC function and enhance beta-catenin-mediated signals in poorly differentiated human esophageal carcinomas. [provided by RefSeq, Jul 2008],
matters needing attention	Avoid repeated freezing and thawing!
Usage suggestions	This product can be used in immunological reaction related experiments. For more information, please consult technical personnel.



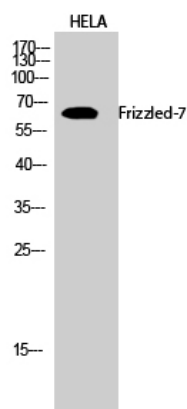
Products Images



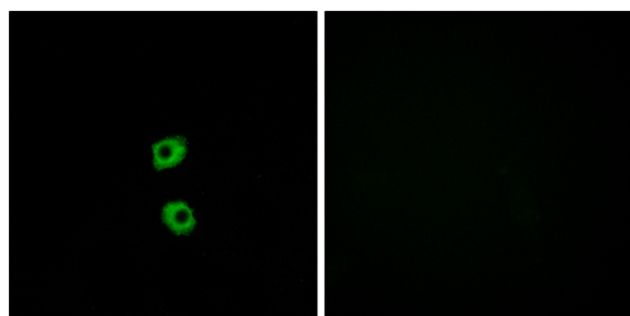
Immunofluorescence analysis of A549. 1, primary Antibody(red) was diluted at 1:200(4°C overnight). 2, Goat Anti Rabbit IgG (H&L) - Alexa Fluor 594 Secondary antibody was diluted at 1:1000(room temperature, 50min).3, Picture B: DAPI(blue) 10min.



Western Blot analysis of various cells using Frizzled-7 Polyclonal Antibody diluted at 1:2000



Western Blot analysis of HELA cells using Frizzled-7 Polyclonal Antibody diluted at 1:2000



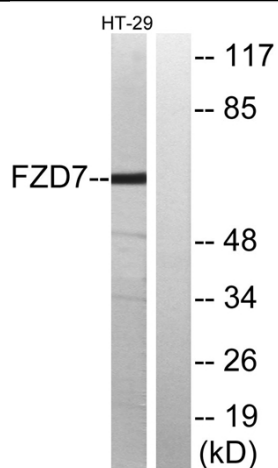
Immunofluorescence analysis of MCF7 cells, using FZD7 Antibody. The picture on the right is blocked with the synthesized peptide.

Nanjing BYabscience technology Co.,Ltd

网址: www.njbybio.com

官方热线: 025-5229-8998

监督电话: 15950492658



Western blot analysis of lysates from HT-29 cells, using FZD7 Antibody. The lane on the right is blocked with the synthesized peptide.