



# GALR1 Polyclonal Antibody

Catalog No	BYab-13269
Isotype	IgG
Reactivity	Human;Mouse
Applications	IF;ELISA
Gene Name	GALR1
Protein Name	Galanin receptor type 1
Immunogen	The antiserum was produced against synthesized peptide derived from human GALR1. AA range:161-210
Specificity	GALR1 Polyclonal Antibody detects endogenous levels of GALR1 protein.
Formulation	Liquid in PBS containing 50% glycerol, 0.5% BSA and 0.02% sodium azide.
Source	Polyclonal, Rabbit,IgG
Purification	The antibody was affinity-purified from rabbit antiserum by affinity-chromatography using epitope-specific immunogen.
Dilution	Immunofluorescence: 1/200 - 1/1000. ELISA: 1/5000. Not yet tested in other applications.
Concentration	1 mg/ml
Purity	≥90%
Storage Stability	-20°C/1 year
Synonyms	GALR1; GALNR; GALNR1; Galanin receptor type 1; GAL1-R; GALR-1
Observed Band	
Cell Pathway	Cell membrane; Multi-pass membrane protein.
Tissue Specificity	Brain,Melanoma,Small intestine,
Function	function:Receptor for the hormone galanin. The activity of this receptor is mediated by G proteins that inhibit adenylate cyclase activity.,PTM:Palmitoylated on at least one of the three cysteine residues present in the C-terminal part.,similarity:Belongs to the G-protein coupled receptor 1 family.,
Background	The neuropeptide galanin elicits a range of biological effects by interaction with specific G-protein-coupled receptors. Galanin receptors are seven-transmembrane proteins shown to activate a variety of intracellular second-messenger pathways. GALR1 inhibits adenylyl cyclase via a G protein of the Gi/Go family. GALR1 is widely expressed in the brain and spinal cord, as well as in peripheral sites such as the small intestine and heart. [provided by

Nanjing BYabscience technology Co.,Ltd



RefSeq, Jul 2008],

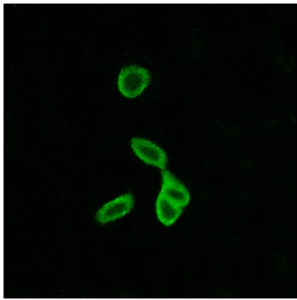
**matters needing attention**

Avoid repeated freezing and thawing!

**Usage suggestions**

This product can be used in immunological reaction related experiments. For more information, please consult technical personnel.

## Products Images



Immunofluorescence analysis of LOVO cells, using GALR1 Antibody. The picture on the right is blocked with the synthesized peptide.

Nanjing BYabscience technology Co.,Ltd

网址: [www.njbybio.com](http://www.njbybio.com)

官方热线: 025-5229-8998

监督电话: 15950492658