



GASP-1 Polyclonal Antibody

Catalog No	BYab-13272
Isotype	IgG
Reactivity	Human;Rat;Mouse;
Applications	IHC;IF;ELISA
Gene Name	GPRASP1
Protein Name	G-protein coupled receptor-associated sorting protein 1
Immunogen	The antiserum was produced against synthesized peptide derived from human GASP1. AA range:741-790
Specificity	GASP-1 Polyclonal Antibody detects endogenous levels of GASP-1 protein.
Formulation	Liquid in PBS containing 50% glycerol, 0.5% BSA and 0.02% sodium azide.
Source	Polyclonal, Rabbit,IgG
Purification	The antibody was affinity-purified from rabbit antiserum by affinity-chromatography using epitope-specific immunogen.
Dilution	Immunohistochemistry: 1/100 - 1/300. Immunofluorescence: 1/200 - 1/1000. ELISA: 1/10000. Not yet tested in other applications.
Concentration	1 mg/ml
Purity	≥90%
Storage Stability	-20°C/1 year
Synonyms	GPRASP1; GASP; KIAA0443; G-protein coupled receptor-associated sorting protein 1; GASP-1
Observed Band	
Cell Pathway	Cytoplasm .
Tissue Specificity	Expressed in the brain, with lower expression in medulla, spinal cord and substantia nigra.
Function	function:May modulate lysosomal sorting and functional down-regulation of a variety of G-protein coupled receptors. Targets receptors for degradation in lysosomes.,similarity:Belongs to the GPRASP family.,subunit:Interacts with cytoplasmic tails of a variety of G-protein coupled receptors such as D2 dopamine receptor/DRD2 (By similarity), delta opioid receptor/OPRD1, beta-2 adrenergic receptor/ADRB2 and D4 dopamine receptor/DRD4. Interacts with PER1.,tissue specificity:Expressed in the brain, with lower expression in medulla, spinal cord and substantia nigra.,

Nanjing BYabscience technology Co.,Ltd

网址: www.njbybio.com

官方热线: 025-5229-8998

监督电话: 15950492658



Background

This gene encodes a member of the GPRASP (G protein-coupled receptor associated sorting protein) family. The protein may modulate lysosomal sorting and functional down-regulation of a variety of G-protein coupled receptors. It targets receptors for degradation in lysosomes. The receptors interacting with this sorting protein include D2 dopamine receptor (DRD2), delta opioid receptor (OPRD1), beta-2 adrenergic receptor (ADRB2), D4 dopamine receptor (DRD4) and cannabinoid 1 receptor (CB1R). Multiple alternatively spliced transcript variants encoding the same protein have been identified. [provided by RefSeq, May 2010],

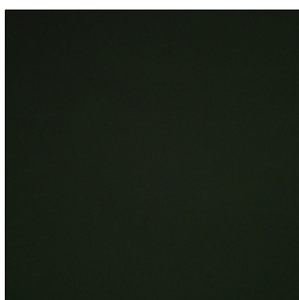
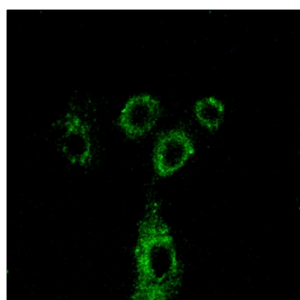
matters needing attention

Avoid repeated freezing and thawing!

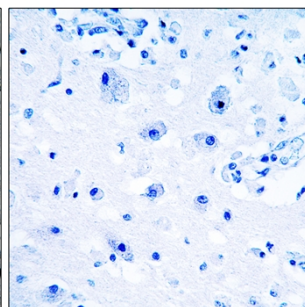
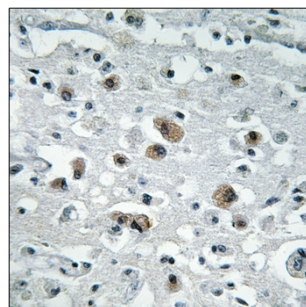
Usage suggestions

This product can be used in immunological reaction related experiments. For more information, please consult technical personnel.

Products Images



Immunofluorescence analysis of A549 cells, using GASP1 Antibody. The picture on the right is blocked with the synthesized peptide.



Immunohistochemistry analysis of paraffin-embedded human brain tissue, using GASP1 Antibody. The picture on the right is blocked with the synthesized peptide.

Nanjing BYabscience technology Co.,Ltd

网址: www.njbybio.com

官方热线: 025-5229-8998

监督电话: 15950492658