



# GPR37 Polyclonal Antibody

Catalog No	BYab-13334
Isotype	IgG
Reactivity	Human;Mouse;Rat
Applications	WB;ELISA
Gene Name	GPR37
Protein Name	Probable G-protein coupled receptor 37
Immunogen	The antiserum was produced against synthesized peptide derived from human GPR37. AA range:211-260
Specificity	GPR37 Polyclonal Antibody detects endogenous levels of GPR37 protein.
Formulation	Liquid in PBS containing 50% glycerol, 0.5% BSA and 0.02% sodium azide.
Source	Polyclonal, Rabbit,IgG
Purification	The antibody was affinity-purified from rabbit antiserum by affinity-chromatography using epitope-specific immunogen.
Dilution	Western Blot: 1/500 - 1/2000. ELISA: 1/10000. Not yet tested in other applications.
Concentration	1 mg/ml
Purity	≥90%
Storage Stability	-20°C/1 year
Synonyms	GPR37; Probable G-protein coupled receptor 37; Endothelin B receptor-like protein 1; ETBR-LP-1; Parkin-associated endothelin receptor-like receptor; PAELR
Observed Band	68kD
Cell Pathway	Cell membrane ; Multi-pass membrane protein . Endoplasmic reticulum membrane ; Multi-pass membrane protein .
Tissue Specificity	Expressed in brain and spinal cord, and at lower levels in testis, placenta and liver, but no detectable expression observed in any other tissue. When overexpressed in cells, tends to become insoluble and unfolded. Accumulation of the unfolded protein may lead to dopaminergic neuronal death in juvenile Parkinson disease (PDJ).
Function	function:Orphan receptor. May have a unique functional role in the central nervous system.,PTM:Ubiquitinated by PARK2 in the presence of UBE2E1 and UBE2L3 in the endoplasmic reticulum. The unfolded form is specifically ubiquitinated by SYVN1, which promotes its proteasomal degradation and prevents neuronal cell death.,similarity:Belongs to the G-protein coupled receptor

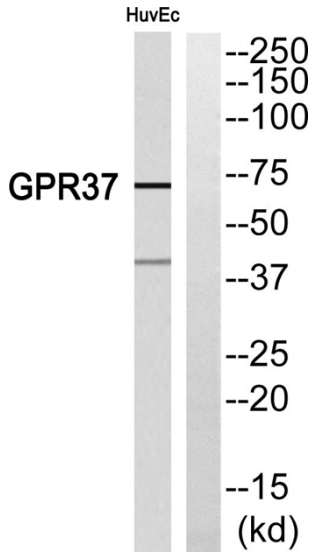
Nanjing BYabs science technology Co.,Ltd



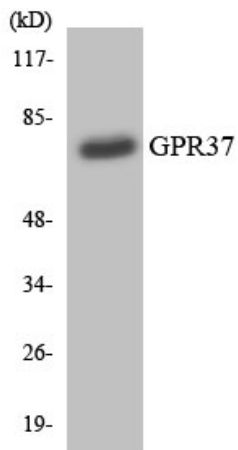
	<p>1 family.,subunit:Forms a complex with PARK2, STUB1 and HSP70. The amount of STUB1 in the complex increases during ER stress. STUB1 promotes the dissociation of HSP70 from PARK2, thus facilitating PARK2-mediated GPR37 ubiquitination. Interacts with PACRG.,tissue specificity:Expressed in brain and spinal cord, and at lower levels in testis, placenta and liver, but no detectable expression observed in any other tissue. When overexpressed in cells, tends to become insoluble and unfolded. Accumulation of the unfolded protein</p>
Background	<p>This gene is a member of the G protein-coupled receptor family. The encoded protein contains seven transmembrane domains and is found in cell and endoplasmic reticulum membranes. G protein-coupled receptors are involved in translating outside signals into G protein mediated intracellular effects. This gene product interacts with Parkin and is involved in juvenile Parkinson disease. [provided by RefSeq, Oct 2012],</p>
matters needing attention	<p>Avoid repeated freezing and thawing!</p>
Usage suggestions	<p>This product can be used in immunological reaction related experiments. For more information, please consult technical personnel.</p>



## Products Images



Western blot analysis of GPR37 Antibody. The lane on the right is blocked with the GPR37 peptide.



Western blot analysis of the lysates from HT-29 cells using GPR37 antibody.