



GPR82 Polyclonal Antibody

| | |
|---------------------------|---|
| Catalog No | BYab-13349 |
| Isotype | IgG |
| Reactivity | Human;Mouse |
| Applications | WB;ELISA |
| Gene Name | GPR82 |
| Protein Name | Probable G-protein coupled receptor 82 |
| Immunogen | The antiserum was produced against synthesized peptide derived from human GPR82. AA range:121-170 |
| Specificity | GPR82 Polyclonal Antibody detects endogenous levels of GPR82 protein. |
| Formulation | Liquid in PBS containing 50% glycerol, 0.5% BSA and 0.02% sodium azide. |
| Source | Polyclonal, Rabbit,IgG |
| Purification | The antibody was affinity-purified from rabbit antiserum by affinity-chromatography using epitope-specific immunogen. |
| Dilution | Western Blot: 1/500 - 1/2000. ELISA: 1/10000. Not yet tested in other applications. |
| Concentration | 1 mg/ml |
| Purity | ≥90% |
| Storage Stability | -20°C/1 year |
| Synonyms | GPR82; Probable G-protein coupled receptor 82 |
| Observed Band | 35kD |
| Cell Pathway | Cell membrane; Multi-pass membrane protein. |
| Tissue Specificity | Placenta,Thyroid, |
| Function | function:Orphan receptor.,similarity:Belongs to the G-protein coupled receptor 1 family., |
| Background | The protein encoded by this gene is an orphan G protein-coupled receptor of unknown function. The encoded protein is a member of a family of proteins that contain seven transmembrane domains and transduce extracellular signals through heterotrimeric G proteins. [provided by RefSeq, Sep 2011], |
| matters needing attention | Avoid repeated freezing and thawing! |

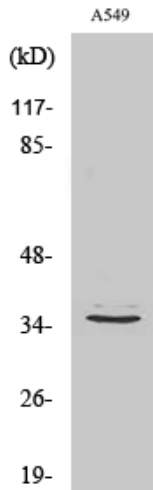
Nanjing BYabscience technology Co.,Ltd



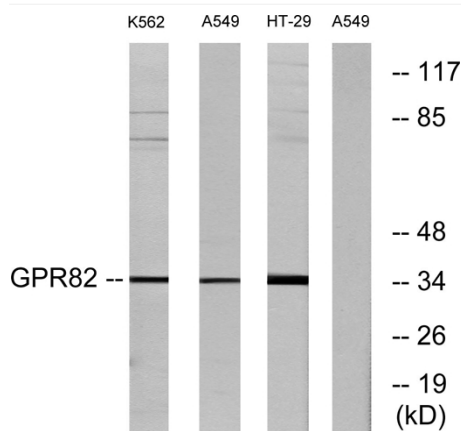
Usage suggestions

This product can be used in immunological reaction related experiments. For more information, please consult technical personnel.

Products Images



Western Blot analysis of various cells using GPR82 Polyclonal Antibody



Western blot analysis of lysates from A549, K562, and HT-29 cells, using GPR82 Antibody. The lane on the right is blocked with the synthesized peptide.