



# GPR85 Polyclonal Antibody

<b>Catalog No</b>	BYab-13351
<b>Isotype</b>	IgG
<b>Reactivity</b>	Human;Mouse;Rat
<b>Applications</b>	IHC;IF;ELISA
<b>Gene Name</b>	GPR85
<b>Protein Name</b>	Probable G-protein coupled receptor 85
<b>Immunogen</b>	The antiserum was produced against synthesized peptide derived from human GPR85. AA range:181-230
<b>Specificity</b>	GPR85 Polyclonal Antibody detects endogenous levels of GPR85 protein.
<b>Formulation</b>	Liquid in PBS containing 50% glycerol, 0.5% BSA and 0.02% sodium azide.
<b>Source</b>	Polyclonal, Rabbit,IgG
<b>Purification</b>	The antibody was affinity-purified from rabbit antiserum by affinity-chromatography using epitope-specific immunogen.
<b>Dilution</b>	Immunohistochemistry: 1/100 - 1/300. Immunofluorescence: 1/200 - 1/1000. ELISA: 1/10000. Not yet tested in other applications.
<b>Concentration</b>	1 mg/ml
<b>Purity</b>	≥90%
<b>Storage Stability</b>	-20°C/1 year
<b>Synonyms</b>	GPR85; SREB2; Probable G-protein coupled receptor 85; Super conserved receptor expressed in brain 2
<b>Observed Band</b>	
<b>Cell Pathway</b>	Cell membrane ; Multi-pass membrane protein . Endoplasmic reticulum .
<b>Tissue Specificity</b>	Highly expressed in brain and testis. Lower levels in small intestine, placenta and spleen. In brain regions, detected in all regions tested, but somewhat lower levels in the corpus callosum, medulla and spinal cord.
<b>Function</b>	function:Orphan receptor.,similarity:Belongs to the G-protein coupled receptor 1 family.,tissue specificity:Highly expressed in brain and testis. Lower levels in small intestine, placenta and spleen. In brain regions, detected in all regions tested, but somewhat lower levels in the corpus callosum, medulla and spinal cord.,
<b>Background</b>	Members of the G protein-coupled receptor (GPCR) family, such as GPR85, have a similar structure characterized by 7 transmembrane domains. Activation of GPCRs by extracellular stimuli, such as neurotransmitters, hormones, or light, induces an intracellular signaling cascade mediated by heterotrimeric

**Nanjing BYabscience technology Co.,Ltd**



GTP-binding proteins, or G proteins (Matsumoto et al., 2000 [PubMed 10833454]).[supplied by OMIM, Aug 2008],

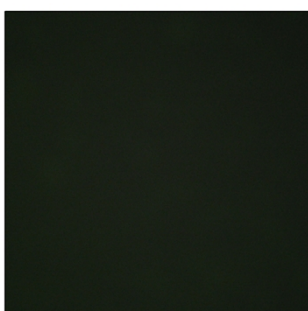
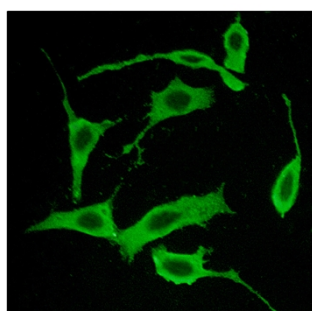
**matters needing attention**

Avoid repeated freezing and thawing!

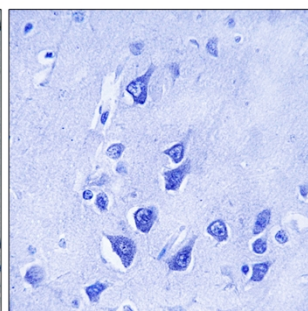
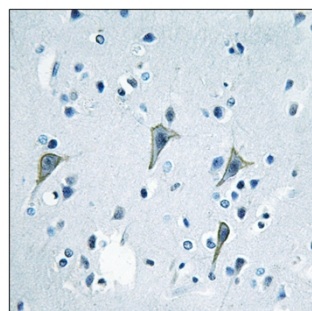
**Usage suggestions**

This product can be used in immunological reaction related experiments. For more information, please consult technical personnel.

## Products Images



Immunofluorescence analysis of LOVO cells, using GPR85 Antibody. The picture on the right is blocked with the synthesized peptide.



Immunohistochemistry analysis of paraffin-embedded human brain tissue, using GPR85 Antibody. The picture on the right is blocked with the synthesized peptide.

**Nanjing BYabscience technology Co.,Ltd**

网址: [www.njbybio.com](http://www.njbybio.com)

官方热线: 025-5229-8998

监督电话: 15950492658