



JTB Polyclonal Antibody

Catalog No	BYab-13384
Isotype	IgG
Reactivity	Human;Rat;Mouse;
Applications	WB;IHC
Gene Name	JTB
Protein Name	Protein JTB
Immunogen	The antiserum was produced against synthesized peptide derived from human JTB. AA range:10-59
Specificity	JTB Polyclonal Antibody detects endogenous levels of JTB protein.
Formulation	Liquid in PBS containing 50% glycerol, 0.5% BSA and 0.02% sodium azide.
Source	Polyclonal, Rabbit,IgG
Purification	The antibody was affinity-purified from rabbit antiserum by affinity-chromatography using epitope-specific immunogen.
Dilution	WB 1:500-2000;IHC-p 1:50-300
Concentration	1 mg/ml
Purity	≥90%
Storage Stability	-20°C/1 year
Synonyms	JTB; HSPC222; Protein JTB; Jumping translocation breakpoint protein; Prostate androgen-regulated protein; PAR protein
Observed Band	17kD
Cell Pathway	Membrane ; Single-pass type I membrane protein . Mitochondrion . Cytoplasm. Cytoplasm, cytoskeleton, microtubule organizing center, centrosome. Cytoplasm, cytoskeleton, spindle. Detected at the centrosome and along spindle fibers during prophase and metaphase. Detected at the midbody during telophase.
Tissue Specificity	Ubiquitous. Expressed in all normal human tissues studied but overexpressed or underexpressed in many of their malignant counterparts.
Function	similarity:Belongs to the JTB family.,tissue specificity:Expressed in all normal human tissues studied but overexpressed in most of their malignant counterparts.,
Background	similarity:Belongs to the JTB family.,tissue specificity:Expressed in all normal human tissues studied but overexpressed in most of their malignant counterparts.,
matters needing attention	Avoid repeated freezing and thawing!

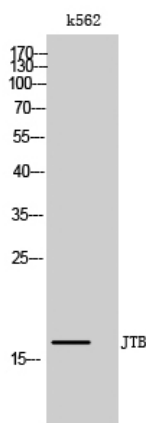
Nanjing BYabscience technology Co.,Ltd



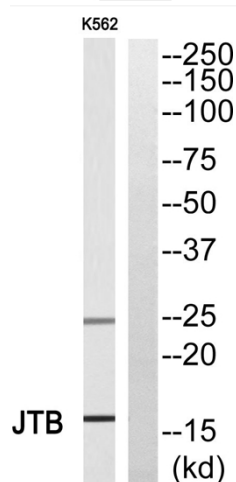
Usage suggestions

This product can be used in immunological reaction related experiments. For more information, please consult technical personnel.

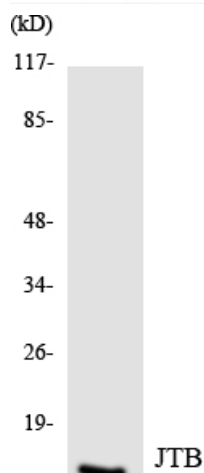
Products Images



Western Blot analysis of k562 cells using JTB Polyclonal Antibody



Western blot analysis of JTB Antibody. The lane on the right is blocked with the JTB peptide.



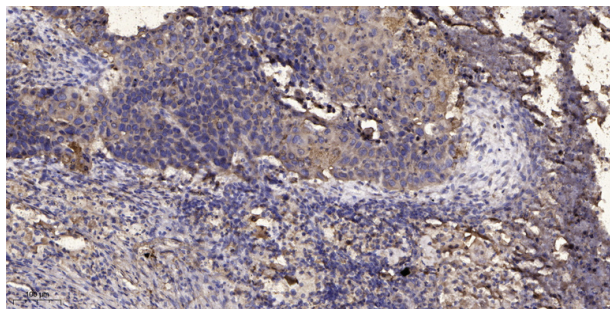
Western blot analysis of the lysates from HUVEC cells using JTB antibody.

Nanjing BYabscience technology Co.,Ltd

网址: www.njbybio.com

官方热线: 025-5229-8998

监督电话: 15950492658



Immunohistochemical analysis of paraffin-embedded human Squamous cell carcinoma of lung. 1, Antibody was diluted at 1:200(4° overnight). 2, Tris-EDTA,pH9.0 was used for antigen retrieval. 3,Secondary antibody was diluted at 1:200(room temperature, 45min).