



# LDLRAD3 Polyclonal Antibody

<b>Catalog No</b>	BYab-13392
<b>Isotype</b>	IgG
<b>Reactivity</b>	Human;Mouse
<b>Applications</b>	WB;IHC
<b>Gene Name</b>	LDLRAD3
<b>Protein Name</b>	Low-density lipoprotein receptor class A domain-containing protein 3
<b>Immunogen</b>	The antiserum was produced against synthesized peptide derived from human LDLRAD3. AA range:37-86
<b>Specificity</b>	LDLRAD3 Polyclonal Antibody detects endogenous levels of LDLRAD3 protein.
<b>Formulation</b>	Liquid in PBS containing 50% glycerol, 0.5% BSA and 0.02% sodium azide.
<b>Source</b>	Polyclonal, Rabbit,IgG
<b>Purification</b>	The antibody was affinity-purified from rabbit antiserum by affinity-chromatography using epitope-specific immunogen.
<b>Dilution</b>	WB 1:500-2000;IHC-p 1:50-300
<b>Concentration</b>	1 mg/ml
<b>Purity</b>	≥90%
<b>Storage Stability</b>	-20°C/1 year
<b>Synonyms</b>	LDLRAD3; Low-density lipoprotein receptor class A domain-containing protein 3
<b>Observed Band</b>	37kD
<b>Cell Pathway</b>	Cell membrane ; Single-pass type I membrane protein .
<b>Tissue Specificity</b>	Expressed at high levels in brain, lung, skeletal muscle, and pancreas. Expressed at moderate levels in heart, placenta, and kidney but not detected in the liver.
<b>Function</b>	similarity:Belongs to the LDLR family.,similarity:Contains 3 LDL-receptor class A domains.,
<b>Background</b>	similarity:Belongs to the LDLR family.,similarity:Contains 3 LDL-receptor class A domains.,
<b>matters needing attention</b>	Avoid repeated freezing and thawing!

**Nanjing BYabscience technology Co.,Ltd**

网址: [www.njbybio.com](http://www.njbybio.com)

官方热线: 025-5229-8998

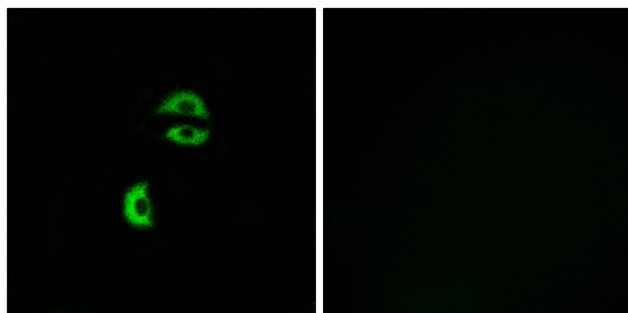
监督电话: 15950492658



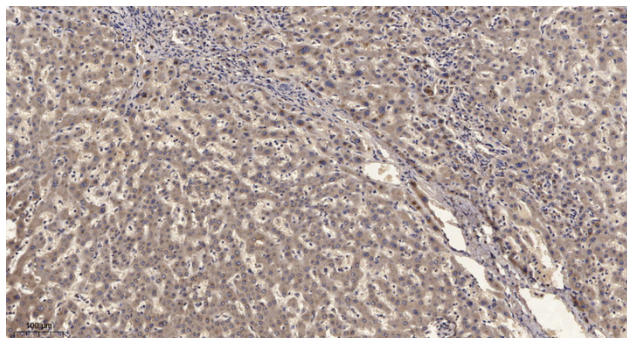
### Usage suggestions

This product can be used in immunological reaction related experiments. For more information, please consult technical personnel.

### Products Images



Immunofluorescence analysis of A549 cells, using LDLRAD3 Antibody. The picture on the right is blocked with the synthesized peptide.



Immunohistochemical analysis of paraffin-embedded human liver cancer. 1, Antibody was diluted at 1:200(4° overnight). 2, Tris-EDTA,pH9.0 was used for antigen retrieval. 3,Secondary antibody was diluted at 1:200(room temperature, 45min).

Nanjing BYabscience technology Co.,Ltd

网址: [www.njbybio.com](http://www.njbybio.com)

官方热线: 025-5229-8998

监督电话: 15950492658