



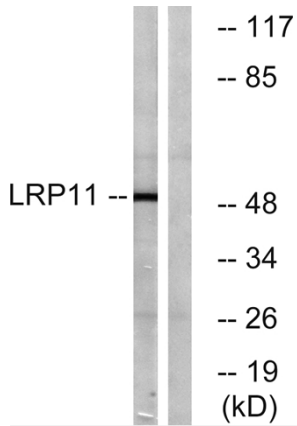
LRP11 Polyclonal Antibody

Catalog No	BYab-13397
Isotype	IgG
Reactivity	Human;Rat;Mouse;
Applications	WB;IHC
Gene Name	LRP11
Protein Name	Low-density lipoprotein receptor-related protein 11
Immunogen	The antiserum was produced against synthesized peptide derived from human LRP11. AA range:48-97
Specificity	LRP11 Polyclonal Antibody detects endogenous levels of LRP11 protein.
Formulation	Liquid in PBS containing 50% glycerol, 0.5% BSA and 0.02% sodium azide.
Source	Polyclonal, Rabbit,IgG
Purification	The antibody was affinity-purified from rabbit antiserum by affinity-chromatography using epitope-specific immunogen.
Dilution	WB 1:500-2000;IHC-p 1:50-300
Concentration	1 mg/ml
Purity	≥90%
Storage Stability	-20°C/1 year
Synonyms	LRP11; Low-density lipoprotein receptor-related protein 11; LRP-11
Observed Band	50kD
Cell Pathway	Membrane ; Single-pass type I membrane protein .
Tissue Specificity	Brain,Skin,
Function	similarity:Belongs to the LDLR family.,similarity:Contains 1 LDL-receptor class A domain.,similarity:Contains 1 MANSC domain.,similarity:Contains 1 PKD domain.,
Background	similarity:Belongs to the LDLR family.,similarity:Contains 1 LDL-receptor class A domain.,similarity:Contains 1 MANSC domain.,similarity:Contains 1 PKD domain.,
matters needing attention	Avoid repeated freezing and thawing!
Usage suggestions	This product can be used in immunological reaction related experiments. For more information, please consult technical personnel.

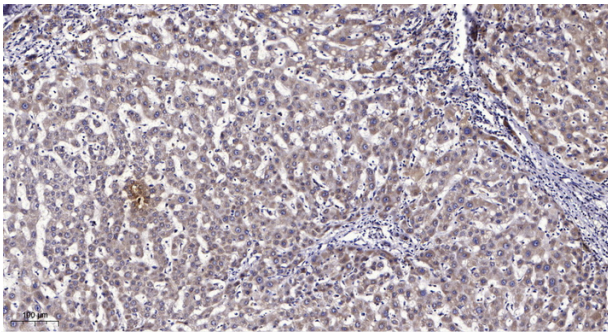
Nanjing BYabscience technology Co.,Ltd



Products Images



Western blot analysis of lysates from Jurkat cells, using LRP11 Antibody. The lane on the right is blocked with the synthesized peptide.



Immunohistochemical analysis of paraffin-embedded human liver cancer. 1, Antibody was diluted at 1:200(4° overnight). 2, Tris-EDTA,pH9.0 was used for antigen retrieval. 3,Secondary antibody was diluted at 1:200(room temperature, 45min).