



EKLF Polyclonal Antibody

Catalog No	BYab-02245
Isotype	IgG
Reactivity	Human;Rat;Mouse;
Applications	WB;ELISA
Gene Name	KLF1
Protein Name	Krueppel-like factor 1
Immunogen	The antiserum was produced against synthesized peptide derived from human KLF1 around the non-acetylation site of Lys274. AA range:231-280
Specificity	EKLF Polyclonal Antibody detects endogenous levels of EKLF protein only when acetylation at K274.
Formulation	Liquid in PBS containing 50% glycerol, 0.5% BSA and 0.02% sodium azide.
Source	Polyclonal, Rabbit,IgG
Purification	The antibody was affinity-purified from rabbit antiserum by affinity-chromatography using epitope-specific immunogen.
Dilution	Western Blot: 1/500 - 1/2000. ELISA: 1/20000. Not yet tested in other applications.
Concentration	1 mg/ml
Purity	≥90%
Storage Stability	-20°C/1 year
Synonyms	KLF1; EKLF; Krueppel-like factor 1; Erythroid krueppel-like transcription factor; EKLF
Observed Band	38kD
Cell Pathway	Nucleus . Colocalizes with SUMO1 in nuclear speckles. .
Tissue Specificity	Expression restricted to adult bone marrow and fetal liver. Not expressed in myeloid nor lymphoid cell lines.
Function	function:Transcription regulator of erythrocyte development. Binds to the CACCC box in the beta-globin gene promoter and activates transcription. When sumoylation, acts as a Probably serves as a general switch factor for erythroid development. When sumoylated, acts as a transcriptional repressor, by promoting interaction with CDH2/Mi2beta and also represses megakaryocytic differentiation.,PTM:Acetylated; can be acetylated on both Lys-274 and Lys-288. Acetylation on Lys-274 (by CBP) appears to be the major site affecting EKLF transactivation activity.,PTM:Phosphorylated primarily on serine residues in the transactivation domain. Phosphorylation on Thr-23 is critical for the transactivation activity.,PTM:Sumoylated; sumoylation, promoted by PIAS1, leads

Nanjing BYabscience technology Co.,Ltd



to repression of megakaryocyte differentiation. Also promotes the interaction with the CDH4 subunit of the NuRD repression complex.,simila

Background

This gene encodes a hematopoietic-specific transcription factor that induces high-level expression of adult beta-globin and other erythroid genes. The zinc-finger protein binds to the DNA sequence CCACACCCT found in the beta hemoglobin promoter. Heterozygous loss-of-function mutations in this gene result in the dominant In(Lu) blood phenotype. [provided by RefSeq, Oct 2009],

matters needing attention

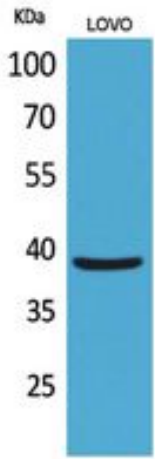
Avoid repeated freezing and thawing!

Usage suggestions

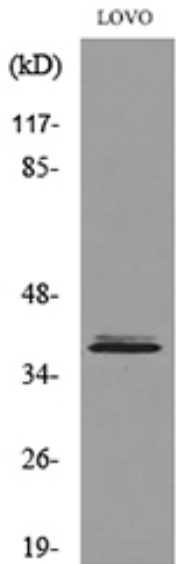
This product can be used in immunological reaction related experiments. For more information, please consult technical personnel.



Products Images



Western Blot analysis of LOVO cells using EKLF Polyclonal Antibody. Secondary antibody(catalog#:RS0002) was diluted at 1:20000 cells nucleus extracted by Minute TM Cytoplasmic and Nuclear Fractionation kit (SC-003, Invent biotech, MN, USA).



Western blot analysis of lysate from LOVO cells, using KLF1 Antibody.