



Cleaved-Cathepsin L1 HC (T288) Polyclonal Antibody

Catalog No	BYab-02284
Isotype	IgG
Reactivity	Human;Rat;Mouse;
Applications	WB;ELISA
Gene Name	CTSL1
Protein Name	Cathepsin L1
Immunogen	The antiserum was produced against synthesized peptide derived from human CATL1. AA range:239-288
Specificity	Cleaved-Cathepsin L1 HC (T288) Polyclonal Antibody detects endogenous levels of fragment of activated Cathepsin L1 HC protein resulting from cleavage adjacent to T288.
Formulation	Liquid in PBS containing 50% glycerol, 0.5% BSA and 0.02% sodium azide.
Source	Polyclonal, Rabbit,IgG
Purification	The antibody was affinity-purified from rabbit antiserum by affinity-chromatography using epitope-specific immunogen.
Dilution	Western Blot: 1/500 - 1/2000. ELISA: 1/10000. Not yet tested in other applications.
Concentration	1 mg/ml
Purity	≥90%
Storage Stability	-20°C/1 year
Synonyms	CTSL1; CTSL; Cathepsin L1; Major excreted protein; MEP
Observed Band	30kD
Cell Pathway	Lysosome . Apical cell membrane ; Peripheral membrane protein ; Extracellular side . Cytoplasmic vesicle, secretory vesicle, chromaffin granule . Secreted, extracellular space . Secreted . Localizes to the apical membrane of thyroid epithelial cells. Released at extracellular space by activated dendritic cells and macrophages. .; [Isoform 2]: Nucleus . Translation initiation at downstream start sites allows the synthesis of isoforms that are devoid of a signal peptide and do not transit through the endoplasmic reticulum to localize to the nucleus (PubMed:15099520). Nuclear location varies during the cell cycle, with higher levels during S phase (PubMed:15099520). .
Tissue Specificity	Cartilage,Colon endothelium,Liver,Plasma,Prostate,
Function	catalytic activity:Specificity close to that of papain. As compared to cathepsin B, cathepsin L exhibits higher activity toward protein substrates, but has little activity

Nanjing BYabscience technology Co.,Ltd



on Z-Arg-Arg-NHMec, and no peptidyl-dipeptidase activity.,function:Important for the overall degradation of proteins in lysosomes.,similarity:Belongs to the peptidase C1 family.,subunit:Dimer of a heavy and a light chain linked by disulfide bonds.,

Background

The protein encoded by this gene is a lysosomal cysteine proteinase that plays a major role in intracellular protein catabolism. Its substrates include collagen and elastin, as well as alpha-1 protease inhibitor, a major controlling element of neutrophil elastase activity. The encoded protein has been implicated in several pathologic processes, including myofibril necrosis in myopathies and in myocardial ischemia, and in the renal tubular response to proteinuria. This protein, which is a member of the peptidase C1 family, is a dimer composed of disulfide-linked heavy and light chains, both produced from a single protein precursor. Multiple alternatively spliced transcript variants have been found for this gene. [provided by RefSeq, Apr 2012],

matters needing attention

Avoid repeated freezing and thawing!

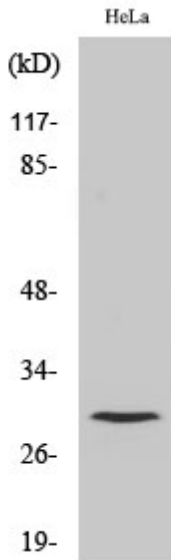
Usage suggestions

This product can be used in immunological reaction related experiments. For more information, please consult technical personnel.

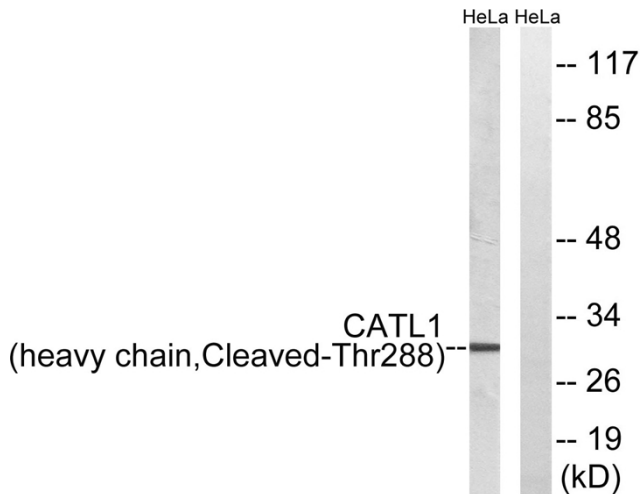
Nanjing BYabscience technology Co.,Ltd



Products Images



Western Blot analysis of various cells using
Cleaved-Cathepsin L1 HC (T288) Polyclonal Antibody



Western blot analysis of lysates from HeLa cells,
treated with etoposide 25uM 1h, using CATL1 (heavy
chain, Cleaved-Thr288) Antibody. The lane on the right
is blocked with the synthesized peptide.

Nanjing BYabs science technology Co.,Ltd

网址: www.njbybio.com

官方热线: 025-5229-8998

监督电话: 15950492658