



PPGB (20k, Cleaved-Met327) rabbit pAb

Catalog No	BYab-02309
Isotype	IgG
Reactivity	Human;Mouse
Applications	WB;IHC
Gene Name	CTSA PPGB
Protein Name	PPGB (20k, Cleaved-Met327)
Immunogen	Synthesized peptide derived from human PPGB (20k, Cleaved-Met327)
Specificity	This antibody detects endogenous levels of Human,Mouse PPGB (20k, Cleaved-Met327, protein was cleaved amino acid sequence between 326-327)
Formulation	Liquid in PBS containing 50% glycerol, 0.5% BSA and 0.02% sodium azide.
Source	Polyclonal, Rabbit,IgG
Purification	The antibody was affinity-purified from rabbit serum by affinity-chromatography using specific immunogen.
Dilution	WB 1:500-2000;IHC-p 1:50-300
Concentration	1 mg/ml
Purity	≥90%
Storage Stability	-20°C/1 year
Synonyms	Lysosomal protective protein (EC 3.4.16.5;Carboxypeptidase C;Carboxypeptidase L;Cathepsin A;Protective protein cathepsin A;PPCA;Protective protein for beta-galactosidase) [Cleaved into: Lysosomal protective protein 32 kDa chain; Lysosomal protective protein 20 kDa chain]
Observed Band	20 52kD
Cell Pathway	Lysosome.
Tissue Specificity	
Function	proteolysis, intracellular protein transport, protein localization, protein transport, cellular protein localization,establishment of protein localization, intracellular transport, cellular macromolecule localization,
Background	catalytic activity:Release of a C-terminal amino acid with broad specificity.,disease:Defects in CTSA are the cause of galactosialidosis [MIM:256540]. It is an autosomal recessive disease.,function:Protective protein appears to be essential for both the activity of beta-galactosidase and

Nanjing BYabscience technology Co.,Ltd



neuraminidase, it associates with these enzymes and exerts a protective function necessary for their stability and activity. This protein is also a carboxypeptidase and can deamidate tachykinins.,similarity:Belongs to the peptidase S10 family.,subunit:Heterodimer of a 32 kDa chain and a 20 kDa chain; disulfide-linked.,

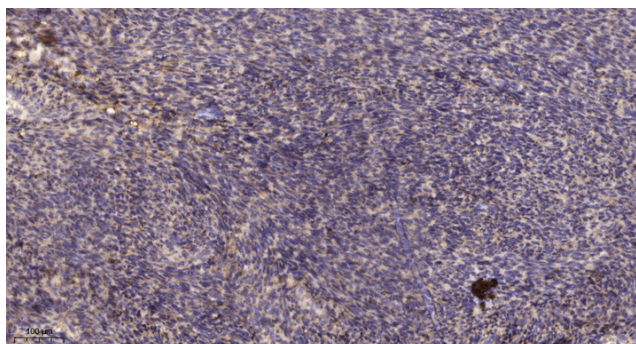
matters needing attention

Avoid repeated freezing and thawing!

Usage suggestions

This product can be used in immunological reaction related experiments. For more information, please consult technical personnel.

Products Images



Immunohistochemical analysis of paraffin-embedded human uterus. 1, Antibody was diluted at 1:200(4° overnight). 2, Tris-EDTA,pH9.0 was used for antigen retrieval. 3,Secondary antibody was diluted at 1:200(room temperature, 45min).