



MMP7 (Cleaved-Tyr95) rabbit pAb

Catalog No	BYab-02313
Isotype	IgG
Reactivity	Human;Mouse;Rat
Applications	WB;ELISA;IHC
Gene Name	MMP7 MPSL1 PUMP1
Protein Name	MMP7 (Cleaved-Tyr95)
Immunogen	Synthesized peptide derived from human MMP7 (Cleaved-Tyr95)
Specificity	This antibody detects endogenous levels of Human,Mouse,Rat MMP7 (Cleaved-Tyr95, protein was cleaved amino acid sequence between 94-95)
Formulation	Liquid in PBS containing 50% glycerol, 0.5% BSA and 0.02% sodium azide.
Source	Polyclonal, Rabbit,IgG
Purification	The antibody was affinity-purified from rabbit serum by affinity-chromatography using specific immunogen.
Dilution	WB 1:500-2000;IHC-p 1:50-300; ELISA 2000-20000
Concentration	1 mg/ml
Purity	≥90%
Storage Stability	-20°C/1 year
Synonyms	Matrilysin (EC 3.4.24.23;Matrin;Matrix metalloproteinase-7;MMP-7;Pump-1 protease;Uterine metalloproteinase)
Observed Band	19 29kD
Cell Pathway	Secreted, extracellular space, extracellular matrix .
Tissue Specificity	
Function	proteolysis, collagen catabolic process, collagen metabolic process, regulation of cell proliferation, multicellular organismal metabolic process, multicellular organismal catabolic process, multicellular organismal macromolecule metabolic process,
Background	catalytic activity:Cleavage of 14-Ala- -Leu-15 and 16-Tyr- -Leu-17 in B chain of insulin. No action on collagen types I, II, IV, V. Cleaves gelatin chain alpha-2(I) > alpha-1(I).,cofactor:Binds 2 calcium ions per subunit.,cofactor:Binds 2 zinc ions per subunit.,domain:The conserved cysteine present in the cysteine-switch motif binds the catalytic zinc ion, thus inhibiting the enzyme. The dissociation of the cysteine from the zinc ion upon the activation-peptide release activates the

Nanjing BYabscience technology Co.,Ltd



enzyme.,function:Degrades casein, gelatins of types I, III, IV, and V, and fibronectin. Activates procollagenase.,similarity:Belongs to the peptidase M10A family.,

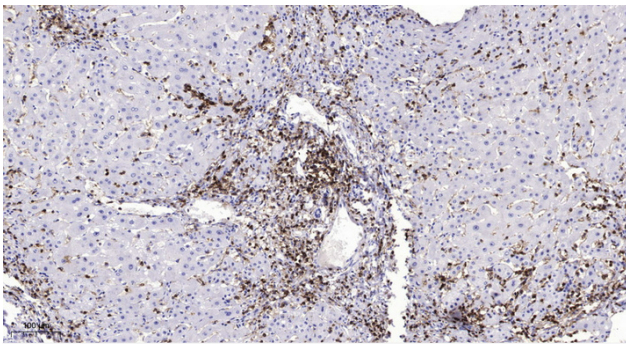
matters needing attention

Avoid repeated freezing and thawing!

Usage suggestions

This product can be used in immunological reaction related experiments. For more information, please consult technical personnel.

Products Images



Immunohistochemical analysis of paraffin-embedded human liver cancer. 1, Antibody was diluted at 1:200(4° overnight). 2, Tris-EDTA,pH9.0 was used for antigen retrieval. 3,Secondary antibody was diluted at 1:200(room temperature, 45min).