



SENP2 mouse mAb(PRT2320)

Catalog No	BYab-02379
Isotype	IgG
Reactivity	Human; Mouse;Rat
Applications	WB
Gene Name	SENP2 KIAA1331
Protein Name	SENP2
Immunogen	Synthesized peptide derived from human SENP2
Specificity	This antibody detects endogenous levels of human SENP2
Formulation	Liquid in PBS containing 50% glycerol, 0.5% BSA and 0.02% sodium azide.
Source	Monoclonal, Mouse
Purification	The antibody was affinity-purified from mouse ascites by affinity-chromatography using specific immunogen.
Dilution	WB 1:1000-2000
Concentration	1 mg/ml
Purity	≥90%
Storage Stability	-20°C/1 year
Synonyms	Sentrin-specific protease 2 (EC 3.4.22.68) (Axa2) (SMT3-specific isopeptidase 2) (Smt3ip2) (Sentrin/SUMO-specific protease SENP2)
Observed Band	68kD
Cell Pathway	Nucleus, nuclear pore complex . Nucleus membrane ; Peripheral membrane protein ; Nucleoplasmic side . Cytoplasm . Shuttles between cytoplasm and nucleus. .
Tissue Specificity	
Function	
Background	SUMO1 (UBL1; MIM 601912) is a small ubiquitin-like protein that can be covalently conjugated to other proteins. SENP2 is one of a group of enzymes that process newly synthesized SUMO1 into the conjugatable form and catalyze the deconjugation of SUMO1-containing species.[supplied by OMIM, Apr 2004],
matters needing attention	Avoid repeated freezing and thawing!

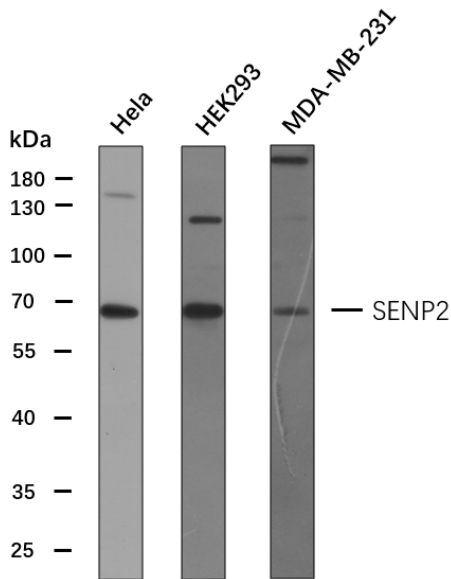
Nanjing BYabscience technology Co.,Ltd



Usage suggestions

This product can be used in immunological reaction related experiments. For more information, please consult technical personnel.

Products Images



Various whole cell lysates (30ug) were separated by 10% SDS-PAGE, and the membrane was blotted with SENP2 antibody at 1ug/ml. The HRP-conjugated anti-Mouse IgG antibody (Cat:RS0001) was used to detect the antibody. Predicted band size: 68kDa