



PLC β 3 (phospho Ser537) Polyclonal Antibody

Catalog No	BYab-02413
Isotype	IgG
Reactivity	Human;Mouse;Rat
Applications	WB;IHC;IF;ELISA
Gene Name	PLCB3
Protein Name	1-phosphatidylinositol 4,5-bisphosphate phosphodiesterase beta-3
Immunogen	The antiserum was produced against synthesized peptide derived from human PLC beta3 around the phosphorylation site of Ser537. AA range:503-552
Specificity	Phospho-PLC β 3 (S537) Polyclonal Antibody detects endogenous levels of PLC β 3 protein only when phosphorylated at S537.
Formulation	Liquid in PBS containing 50% glycerol, 0.5% BSA and 0.02% sodium azide.
Source	Polyclonal, Rabbit,IgG
Purification	The antibody was affinity-purified from rabbit antiserum by affinity-chromatography using epitope-specific immunogen.
Dilution	WB: 1/500 - 1/2000. IHC: 1/100 - 1/300. ELISA: 1/10000.. IF 1:50-200
Concentration	1 mg/ml
Purity	$\geq 90\%$
Storage Stability	-20°C/1 year
Synonyms	PLCB3; 1-phosphatidylinositol 4; 5-bisphosphate phosphodiesterase beta-3; Phosphoinositide phospholipase C-beta-3; Phospholipase C-beta-3; PLC-beta-3
Observed Band	150kD
Cell Pathway	Cytoplasm . Membrane . Nucleus . And particulate fractions. .
Tissue Specificity	Epithelium,Uterus,
Function	catalytic activity:1-phosphatidyl-1D-myo-inositol 4,5-bisphosphate + H(2)O = 1D-myo-inositol 1,4,5-trisphosphate + diacylglycerol.,cofactor:Calcium.,function:The production of the second messenger molecules diacylglycerol (DAG) and inositol 1,4,5-trisphosphate (IP3) is mediated by activated phosphatidylinositol-specific phospholipase C enzymes.,similarity:Contains 1 C2 domain.,similarity:Contains 1 PI-PLC X-box domain.,similarity:Contains 1 PI-PLC Y-box domain.,subunit:Interacts with SHANK2 (By similarity). Interacts with LPAR2.,

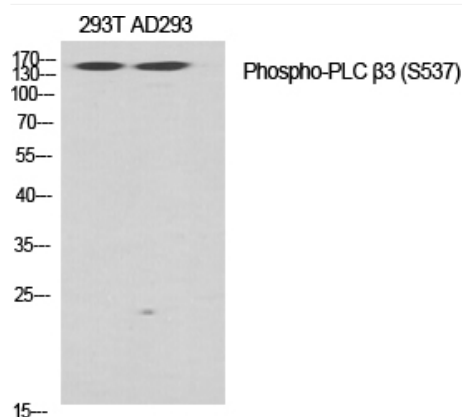
Nanjing BYabscience technology Co.,Ltd



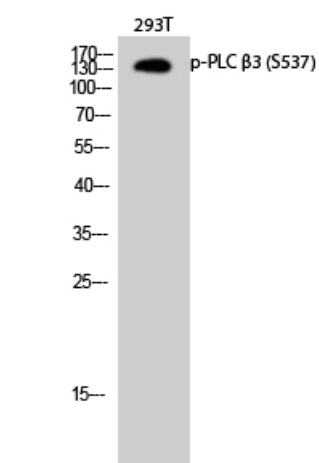
Background	This gene encodes a member of the phosphoinositide phospholipase C beta enzyme family that catalyze the production of the secondary messengers diacylglycerol and inositol 1,4,5-triphosphate from phosphatidylinositol in G-protein-linked receptor-mediated signal transduction. Alternative splicing results in multiple transcript variants.[provided by RefSeq, May 2010],
matters needing attention	Avoid repeated freezing and thawing!
Usage suggestions	This product can be used in immunological reaction related experiments. For more information, please consult technical personnel.



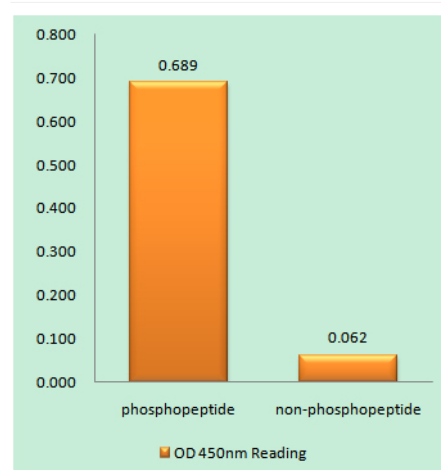
Products Images



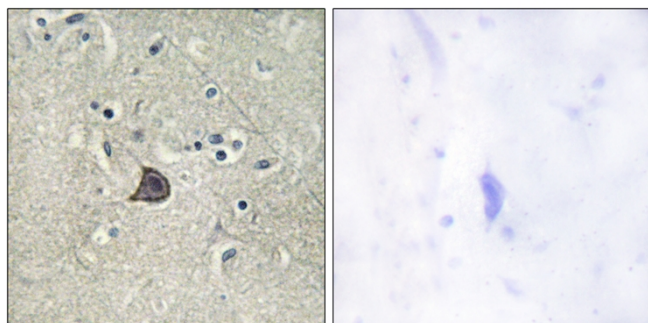
Western Blot analysis of various cells using Phospho-PLC β 3 (S537) Polyclonal Antibody diluted at 1:500



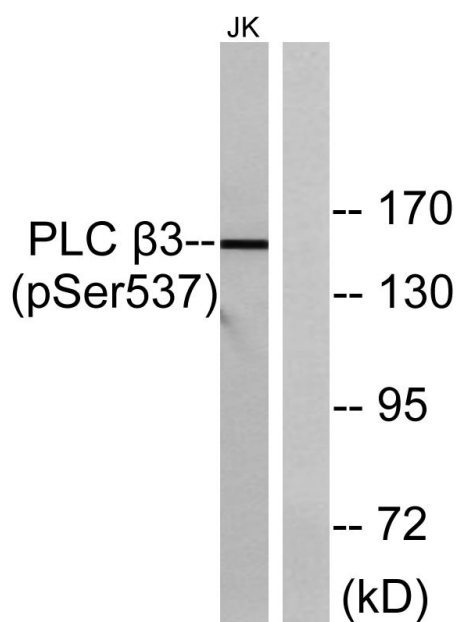
Western Blot analysis of 293T cells using Phospho-PLC β 3 (S537) Polyclonal Antibody diluted at 1:500



Enzyme-Linked Immunosorbent Assay (Phospho-ELISA) for Immunogen Phosphopeptide (Phospho-left) and Non-Phosphopeptide (Phospho-right), using PLC beta3 (Phospho-Ser537) Antibody



Immunohistochemistry analysis of paraffin-embedded human brain, using PLC beta3 (Phospho-Ser537) Antibody. The picture on the right is blocked with the phospho peptide.



Western blot analysis of lysates from Jurkat cells treated with UV 15', using PLC beta3 (Phospho-Ser537) Antibody. The lane on the right is blocked with the phospho peptide.