



PC-PLD1 (phospho Ser561) Polyclonal Antibody

Catalog No	BYab-02431
Isotype	IgG
Reactivity	Human;Mouse;Rat
Applications	IHC;IF;ELISA
Gene Name	PLD1
Protein Name	Phospholipase D1
Immunogen	The antiserum was produced against synthesized peptide derived from human PLD1 around the phosphorylation site of Ser561. AA range:527-576
Specificity	Phospho-PC-PLD1 (S561) Polyclonal Antibody detects endogenous levels of PC-PLD1 protein only when phosphorylated at S561.
Formulation	Liquid in PBS containing 50% glycerol, 0.5% BSA and 0.02% sodium azide.
Source	Polyclonal, Rabbit,IgG
Purification	The antibody was affinity-purified from rabbit antiserum by affinity-chromatography using epitope-specific immunogen.
Dilution	Immunohistochemistry: 1/100 - 1/300. Immunofluorescence: 1/200 - 1/1000. ELISA: 1/10000. Not yet tested in other applications.
Concentration	1 mg/ml
Purity	≥90%
Storage Stability	-20°C/1 year
Synonyms	PLD1; Phospholipase D1; PLD 1; hPLD1; Choline phosphatase 1; Phosphatidylcholine-hydrolyzing phospholipase D1
Observed Band	
Cell Pathway	Cytoplasm, perinuclear region . Endoplasmic reticulum membrane ; Lipid-anchor ; Cytoplasmic side . Golgi apparatus membrane ; Lipid-anchor ; Cytoplasmic side . Late endosome membrane ; Lipid-anchor ; Cytoplasmic side .
Tissue Specificity	Expressed abundantly in the pancreas and heart and at high levels in brain, placenta, spleen, uterus and small intestine.
Function	catalytic activity:A phosphatidylcholine + H(2)O = choline + a phosphatidate.,enzyme regulation:Stimulated by phosphatidylinositol 4,5-bisphosphate and phosphatidylinositol 3,4,5-trisphosphate, activated by the phosphokinase C-alpha, by the ADP-ribosylation factor-1 (ARF-1), and to a lesser extent by GTP-binding proteins: RHO A, RAC-1 and CDC42. Inhibited by oleate.,function:Implicated as a critical step in numerous cellular pathways, including signal transduction, membrane trafficking, and the regulation of mitosis. May be involved in the regulation of perinuclear intravesicular membrane

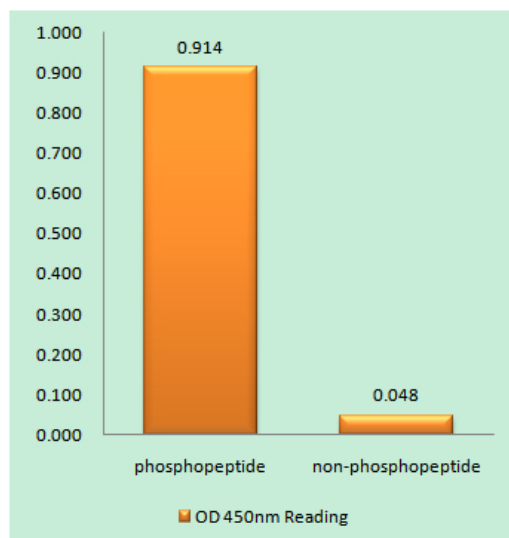
Nanjing BYabscience technology Co.,Ltd



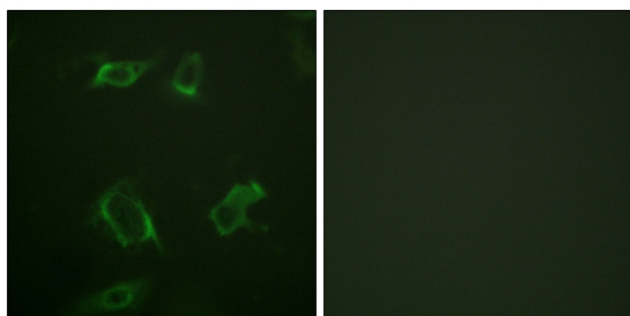
	traffic.,online information:Phospholipase D entry,similarity:Belongs to the phospholipase D family.,similarity:Contains 1 PH domain.,similarity:Contains 1 PX (phox homology) domain.,similarity:Contains 2 PLD phosphodiesterase domains.,subunit:Interacts with PIP5K1A.,tissue specificity:Expressed abundant
Background	This gene encodes a phosphatidylcholine-specific phospholipase which catalyzes the hydrolysis of phosphatidylcholine in order to yield phosphatidic acid and choline. The enzyme may play a role in signal transduction and subcellular trafficking. Alternative splicing results in multiple transcript variants with both catalytic and regulatory properties. [provided by RefSeq, Sep 2011],
matters needing attention	Avoid repeated freezing and thawing!
Usage suggestions	This product can be used in immunological reaction related experiments. For more information, please consult technical personnel.



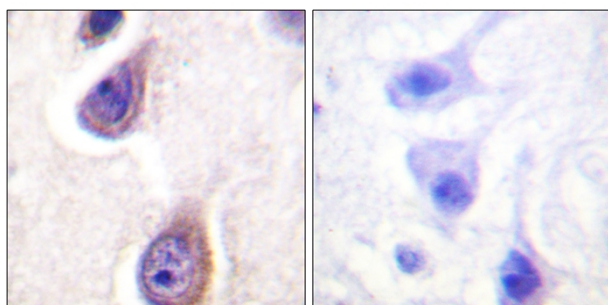
Products Images



Enzyme-Linked Immunosorbent Assay
 (Phospho-ELISA) for Immunogen Phosphopeptide
 (Phospho-left) and Non-Phosphopeptide
 (Phospho-right), using PLD1 (Phospho-Ser561)
 Antibody



Immunofluorescence analysis of HepG2 cells, using
 PLD1 (Phospho-Ser561) Antibody. The picture on the
 right is blocked with the phosphopeptide.



Immunohistochemistry analysis of paraffin-embedded
 human brain, using PLD1 (Phospho-Ser561) Antibody.
 The picture on the right is blocked with the phospho
 peptide.

Nanjing BYabs science technology Co.,Ltd

网址: www.njbybio.com

官方热线: 025-5229-8998

监督电话: 15950492658