



BCKDK Polyclonal Antibody

Catalog No	BYab-02508
Isotype	IgG
Reactivity	Human;Mouse;Rat
Applications	WB;IHC;IF;ELISA
Gene Name	BCKDK
Protein Name	[3-methyl-2-oxobutanoate dehydrogenase [lipoamide]] kinase mitochondrial
Immunogen	The antiserum was produced against synthesized peptide derived from human BCKD . AA range:11-60
Specificity	BCKDK Polyclonal Antibody detects endogenous levels of BCKDK protein.
Formulation	Liquid in PBS containing 50% glycerol, 0.5% BSA and 0.02% sodium azide.
Source	Polyclonal, Rabbit,IgG
Purification	The antibody was affinity-purified from rabbit antiserum by affinity-chromatography using epitope-specific immunogen.
Dilution	Western Blot: 1/500 - 1/2000. Immunohistochemistry: 1/100 - 1/300. Immunofluorescence: 1/200 - 1/1000. ELISA: 1/20000. Not yet tested in other applications.
Concentration	1 mg/ml
Purity	≥90%
Storage Stability	-20°C/1 year
Synonyms	BCKDK; [3-methyl-2-oxobutanoate dehydrogenase [lipoamide]] kinase; mitochondrial; Branched-chain alpha-ketoacid dehydrogenase kinase; BCKD-kinase; BCKDHKIN
Observed Band	46kD
Cell Pathway	Mitochondrion matrix. Mitochondrion .
Tissue Specificity	Ubiquitous.
Function	catalytic activity:ATP + [3-methyl-2-oxobutanoate dehydrogenase (acetyl-transferring)] = ADP + [3-methyl-2-oxobutanoate dehydrogenase (acetyl-transferring)] phosphate.,function:Catalyzes the phosphorylation and inactivation of the branched-chain alpha-ketoacid dehydrogenase complex, the key regulatory enzyme of the valine, leucine and isoleucine catabolic pathways. Key enzyme that regulate the activity state of the BCKD complex.,PTM:Autophosphorylated.,similarity:Belongs to the PDK/BCKDK protein kinase family.,similarity:Contains 1 histidine kinase

Nanjing BYabscience technology Co.,Ltd



domain.,subunit:Monomer.,tissue specificity:Ubiquitous.,

Background

The branched-chain alpha-ketoacid dehydrogenase complex (BCKD) is an important regulator of the valine, leucine, and isoleucine catabolic pathways. The protein encoded by this gene is found in the mitochondrion, where it phosphorylates and inactivates BCKD. Several transcript variants encoding different isoforms have been found for this gene. [provided by RefSeq, Dec 2012],

matters needing attention

Avoid repeated freezing and thawing!

Usage suggestions

This product can be used in immunological reaction related experiments. For more information, please consult technical personnel.

Nanjing BYabscience technology Co.,Ltd

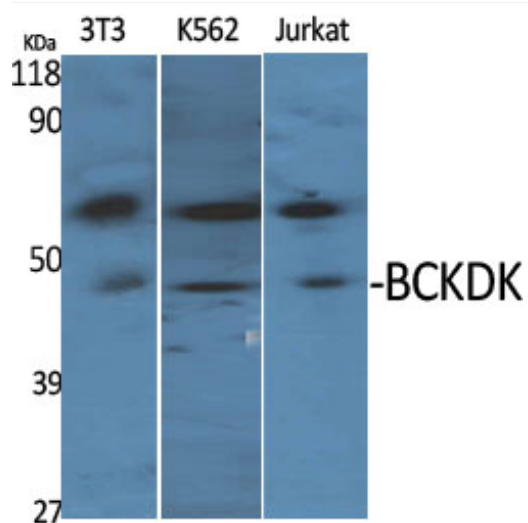
网址: www.njbybio.com

官方热线: 025-5229-8998

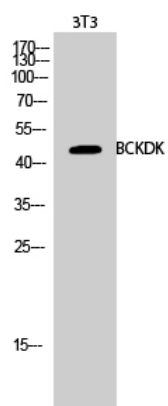
监督电话: 15950492658



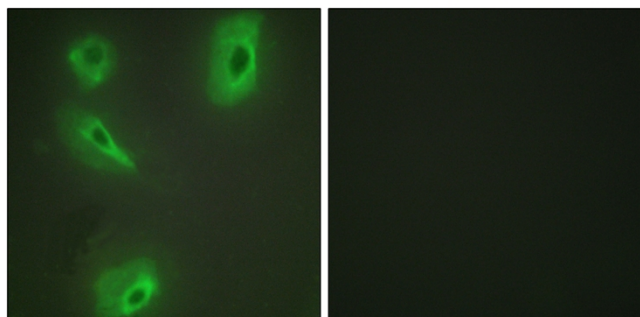
Products Images



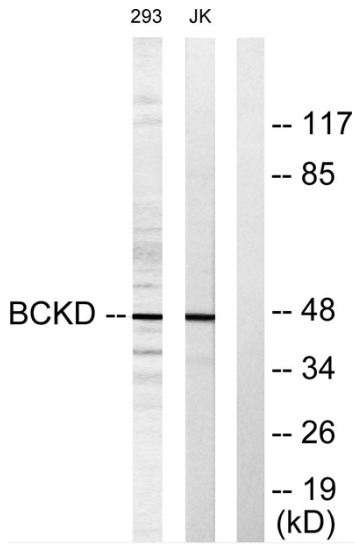
Western Blot analysis of various cells using BCKDK Polyclonal Antibody



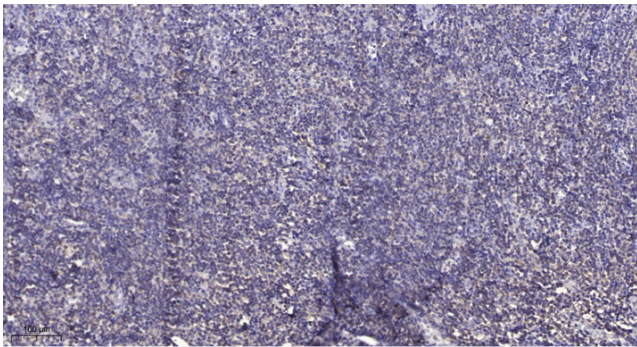
Western Blot analysis of 3T3 cells using BCKDK Polyclonal Antibody



Immunofluorescence analysis of HeLa cells, using BCKD Antibody . The picture on the right is blocked with the synthesized peptide.



Western blot analysis of lysates from Jurkat and 293 cells, using BCKD Antibody . The lane on the right is blocked with the synthesized peptide.



Immunohistochemical analysis of paraffin-embedded human tonsil. 1, Antibody was diluted at 1:200(4° overnight). 2, Tris-EDTA,pH9.0 was used for antigen retrieval. 3,Secondary antibody was diluted at 1:200(room temperature, 30min).