



Calpain 12 Polyclonal Antibody

Catalog No	BYab-02522
Isotype	IgG
Reactivity	Human;Rat;Mouse;
Applications	WB;ELISA
Gene Name	CAPN12
Protein Name	Calpain-12
Immunogen	The antiserum was produced against synthesized peptide derived from human CAPN12. AA range:221-270
Specificity	Calpain 12 Polyclonal Antibody detects endogenous levels of Calpain 12 protein.
Formulation	Liquid in PBS containing 50% glycerol, 0.5% BSA and 0.02% sodium azide.
Source	Polyclonal, Rabbit,IgG
Purification	The antibody was affinity-purified from rabbit antiserum by affinity-chromatography using epitope-specific immunogen.
Dilution	Western Blot: 1/500 - 1/2000. ELISA: 1/5000. Not yet tested in other applications.
Concentration	1 mg/ml
Purity	≥90%
Storage Stability	-20°C/1 year
Synonyms	CAPN12; Calpain-12; Calcium-activated neutral proteinase 12; CANP 12
Observed Band	80kD
Cell Pathway	intracellular,cytoplasm,
Tissue Specificity	Thalamus,
Function	catalytic activity:Broad endopeptidase specificity.,function:Calcium-regulated non-lysosomal thiol-protease.,similarity:Belongs to the peptidase C2 family.,similarity:Contains 1 calpain catalytic domain.,similarity:Contains 1 EF-hand domain.,
Background	The calpains, calcium-activated neutral proteases, are nonlysosomal, intracellular cysteine proteases. The mammalian calpains include ubiquitous, stomach-specific, and muscle-specific proteins. The ubiquitous enzymes consist of heterodimers with distinct large, catalytic subunits associated with a common small, regulatory subunit. This gene encodes a member of the calpain large subunit family. [provided by RefSeq, Jun 2012],

Nanjing BYabscience technology Co.,Ltd



matters needing attention

Avoid repeated freezing and thawing!

Usage suggestions

This product can be used in immunological reaction related experiments. For more information, please consult technical personnel.

Nanjing BYabscience technology Co.,Ltd

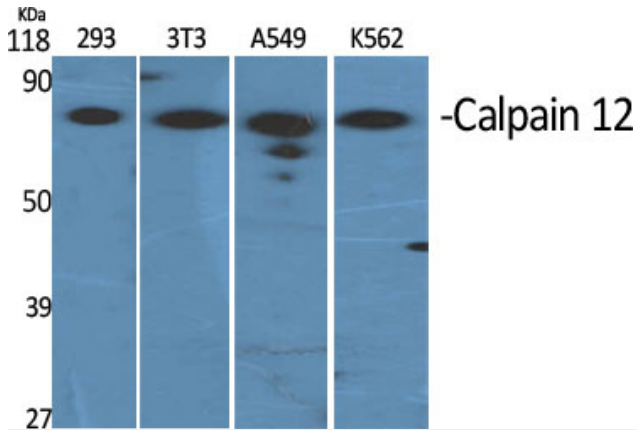
网址: www.njbybio.com

官方热线: 025-5229-8998

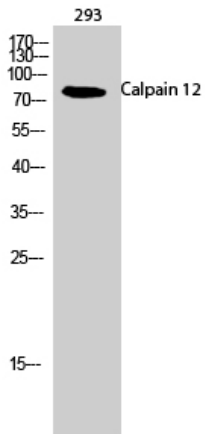
监督电话: 15950492658



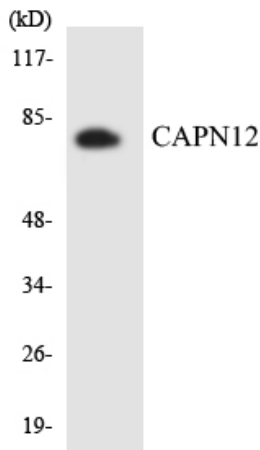
Products Images



Western Blot analysis of various cells using Calpain 12 Polyclonal Antibody



Western Blot analysis of 293 cells using Calpain 12 Polyclonal Antibody



Western blot analysis of the lysates from K562 cells using CAPN12 antibody.