



cPLA2-γ Polyclonal Antibody

Catalog No	BYab-02551
Isotype	IgG
Reactivity	Human;Rat;Mouse;
Applications	WB;ELISA
Gene Name	PLA2G4C
Protein Name	Cytosolic phospholipase A2 gamma
Immunogen	The antiserum was produced against synthesized peptide derived from human PLA2G4C. AA range:301-350
Specificity	cPLA2-γ Polyclonal Antibody detects endogenous levels of cPLA2-γ protein.
Formulation	Liquid in PBS containing 50% glycerol, 0.5% BSA and 0.02% sodium azide.
Source	Polyclonal, Rabbit,IgG
Purification	The antibody was affinity-purified from rabbit antiserum by affinity-chromatography using epitope-specific immunogen.
Dilution	Western Blot: 1/500 - 1/2000. ELISA: 1/20000. Not yet tested in other applications.
Concentration	1 mg/ml
Purity	≥90%
Storage Stability	-20°C/1 year
Synonyms	PLA2G4C; Cytosolic phospholipase A2 gamma; cPLA2-gamma; Phospholipase A2 group IVC
Observed Band	70kD
Cell Pathway	Cell membrane ; Lipid-anchor . Endoplasmic reticulum membrane ; Lipid-anchor. Mitochondrion membrane ; Lipid-anchor. Lipid droplet . Translocates from endoplasmic reticulum to lipid droplets in response to oleate. .
Tissue Specificity	Highly expressed in heart and skeletal muscle.
Function	catalytic activity:Phosphatidylcholine + H(2)O = 1-acylglycerophosphocholine + a carboxylate.,enzyme regulation:Not regulated by calcium.,function:Has a preference for arachidonic acid at the sn-2 position of phosphatidylcholine as compared with palmitic acid.,similarity:Contains 1 PLA2c domain.,tissue specificity:Highly expressed in heart and skeletal muscle.,
Background	This gene encodes a protein which is a member of the phospholipase A2 enzyme family which hydrolyzes glycerophospholipids to produce free fatty acids and lysophospholipids, both of which serve as precursors in the production of

Nanjing BYabscience technology Co.,Ltd



signaling molecules. The encoded protein has been shown to be a calcium-independent and membrane bound enzyme. Multiple transcript variants encoding different isoforms have been found for this gene. [provided by RefSeq, Apr 2009],

matters needing attention

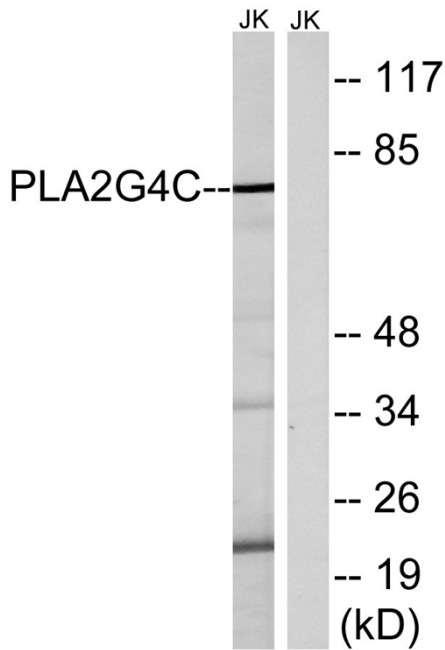
Avoid repeated freezing and thawing!

Usage suggestions

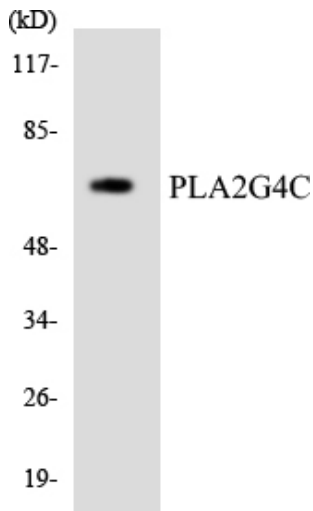
This product can be used in immunological reaction related experiments. For more information, please consult technical personnel.



Products Images



Western blot analysis of lysates from Jurkat cells, using PLA2G4C Antibody. The lane on the right is blocked with the synthesized peptide.



Western blot analysis of the lysates from HeLa cells using PLA2G4C antibody.