



CYP2C19 Polyclonal Antibody

Catalog No	BYab-02582
Isotype	IgG
Reactivity	Human;Rat;Mouse;
Applications	WB;IHC;IF;ELISA
Gene Name	CYP2C19
Protein Name	Cytochrome P450 2C19
Immunogen	The antiserum was produced against synthesized peptide derived from human Cytochrome P450 2C19. AA range:241-290
Specificity	CYP2C19 Polyclonal Antibody detects endogenous levels of CYP2C19 protein.
Formulation	Liquid in PBS containing 50% glycerol, 0.5% BSA and 0.02% sodium azide.
Source	Polyclonal, Rabbit,IgG
Purification	The antibody was affinity-purified from rabbit antiserum by affinity-chromatography using epitope-specific immunogen.
Dilution	Western Blot: 1/500 - 1/2000. Immunohistochemistry: 1/100 - 1/300. Immunofluorescence: 1/200 - 1/1000. ELISA: 1/5000. Not yet tested in other applications.
Concentration	1 mg/ml
Purity	≥90%
Storage Stability	-20°C/1 year
Synonyms	CYP2C19; Cytochrome P450 2C19; (R)-limonene 6-monooxygenase; (S)-limonene 6-monooxygenase; (S)-limonene 7-monooxygenase; CYP11C17; CYP11C19; Cytochrome P450-11A; Cytochrome P450-254C; Mephenytoin 4-hydroxylase
Observed Band	56kD
Cell Pathway	Endoplasmic reticulum membrane; Peripheral membrane protein. Microsome membrane; Peripheral membrane protein.
Tissue Specificity	Liver,
Function	catalytic activity:(+)-(R)-limonene + NADPH + O(2) = (+)-trans-carveol + NADP(+) + H(2)O.,catalytic activity:(-)-(S)-limonene + NADPH + O(2) = (-)-perillyl alcohol + NADP(+) + H(2)O.,catalytic activity:(-)-(S)-limonene + NADPH + O(2) = (-)-trans-carveol + NADP(+) + H(2)O.,caution:P450-254C was originally listed as a separate gene (CYP2C17). Resequencing demonstrated that it is not a separate gene, but a chimera. The 5'-portion corresponds to a partial 2C18 clone,

Nanjing BYabs science technology Co.,Ltd



and the 3'-portion corresponds to a partial 2C19 clone.,cofactor:Heme group.,function:Responsible for the metabolism of a number of therapeutic agents such as the anticonvulsant drug S-mephenytoin, omeprazole, proguanil, certain barbiturates, diazepam, propranolol, citalopram and imipramine.,induction:P450 can be induced to high levels in liver and other tissues by various foreign compounds, including drugs, pesticides, and carc

Background

cytochrome P450 family 2 subfamily C member 19(CYP2C19) Homo sapiens
This gene encodes a member of the cytochrome P450 superfamily of enzymes. The cytochrome P450 proteins are monooxygenases which catalyze many reactions involved in drug metabolism and synthesis of cholesterol, steroids and other lipids. This protein localizes to the endoplasmic reticulum and is known to metabolize many xenobiotics, including the anticonvulsive drug mephenytoin, omeprazole, diazepam and some barbiturates. Polymorphism within this gene is associated with variable ability to metabolize mephenytoin, known as the poor metabolizer and extensive metabolizer phenotypes. The gene is located within a cluster of cytochrome P450 genes on chromosome 10q24. [provided by RefSeq, Jul 2008],

matters needing attention

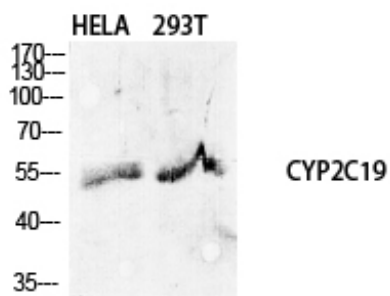
Avoid repeated freezing and thawing!

Usage suggestions

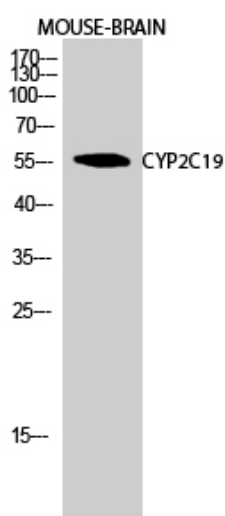
This product can be used in immunological reaction related experiments. For more information, please consult technical personnel.



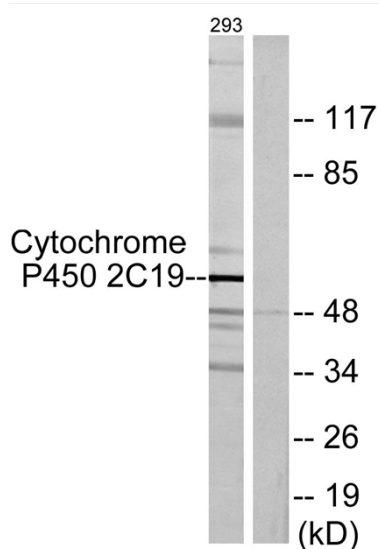
Products Images



Western Blot analysis of various cells using CYP2C19 Polyclonal Antibody diluted at 1:1000



Western Blot analysis of MOUSE-BRAIN cells using CYP2C19 Polyclonal Antibody diluted at 1:1000



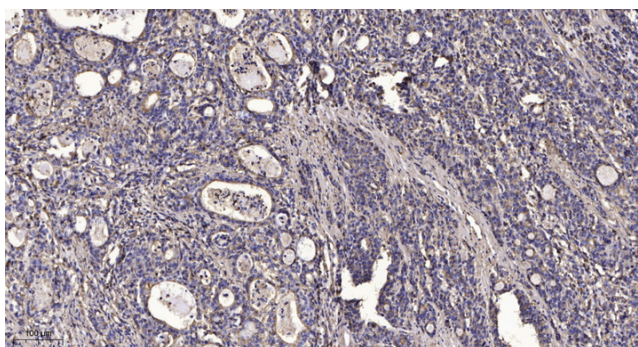
Western blot analysis of lysates from 293 cells, using Cytochrome P450 2C19 Antibody. The lane on the right is blocked with the synthesized peptide.

Nanjing BYabs science technology Co.,Ltd

网址: www.njbybio.com

官方热线: 025-5229-8998

监督电话: 15950492658



Immunohistochemical analysis of paraffin-embedded human Gastric adenocarcinoma. 1, Antibody was diluted at 1:200(4° overnight). 2, Tris-EDTA,pH9.0 was used for antigen retrieval. 3,Secondary antibody was diluted at 1:200(room temperature, 45min).