



# Glucosidase II $\beta$ Polyclonal Antibody

Catalog No	BYab-02642
Isotype	IgG
Reactivity	Human;Mouse
Applications	WB;IF;ELISA
Gene Name	PRKCSH
Protein Name	Glucosidase 2 subunit beta
Immunogen	The antiserum was produced against synthesized peptide derived from human GLU2B. AA range:81-130
Specificity	Glucosidase II $\beta$ Polyclonal Antibody detects endogenous levels of Glucosidase II $\beta$ protein.
Formulation	Liquid in PBS containing 50% glycerol, 0.5% BSA and 0.02% sodium azide.
Source	Polyclonal, Rabbit,IgG
Purification	The antibody was affinity-purified from rabbit antiserum by affinity-chromatography using epitope-specific immunogen.
Dilution	Western Blot: 1/500 - 1/2000. Immunofluorescence: 1/200 - 1/1000. ELISA: 1/10000. Not yet tested in other applications.
Concentration	1 mg/ml
Purity	$\geq 90\%$
Storage Stability	-20°C/1 year
Synonyms	PRKCSH; G19P1; Glucosidase 2 subunit beta; 80K-H protein; Glucosidase II subunit beta; Protein kinase C substrate 60.1 kDa protein heavy chain; PKCSH
Observed Band	59kD
Cell Pathway	Endoplasmic reticulum .
Tissue Specificity	Lung,Lymphocyte,Platelet,
Function	disease:Defects in PRKCSH are a cause of polycystic liver disease (PCLD) [MIM:174050]. PCLD is an autosomal dominant disorder and is characterized by the presence of multiple liver cysts of biliary epithelial origin. PCLD is a distinct clinical and genetic entity that can occur independently from autosomal dominant polycystic kidney disease (ADPKD) [MIM:173900], which in a considerable but uncertain proportion of cases is associated with hepatic cysts.,function:Regulatory subunit of glucosidase II.,pathway:Glycan metabolism; N-glycan metabolism.,similarity:Contains 1 PRKCSH domain.,similarity:Contains 2 EF-hand domains.,subunit:Heterodimer of a catalytic alpha subunit (GANAB) and a beta subunit (PRKCSH). Binds glycosylated PTPRC.,

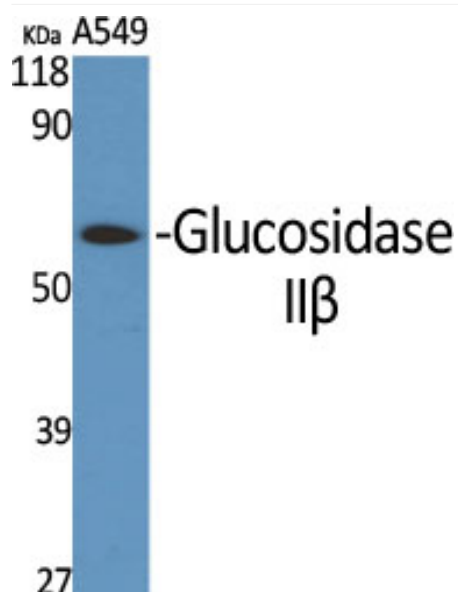
Nanjing BYabscience technology Co.,Ltd



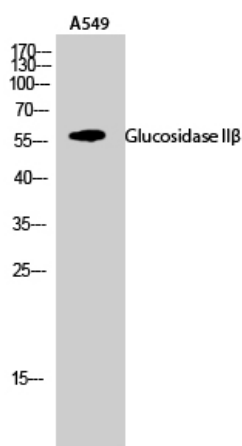
Background	This gene encodes the beta-subunit of glucosidase II, an N-linked glycan-processing enzyme in the endoplasmic reticulum. The encoded protein is an acidic phosphoprotein known to be a substrate for protein kinase C. Mutations in this gene have been associated with the autosomal dominant polycystic liver disease. Alternative splicing results in multiple transcript variants. [provided by RefSeq, Jan 2014],
matters needing attention	Avoid repeated freezing and thawing!
Usage suggestions	This product can be used in immunological reaction related experiments. For more information, please consult technical personnel.



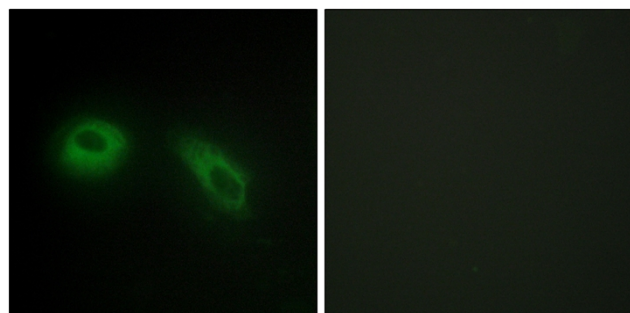
## Products Images



Western Blot analysis of various cells using Glucosidase II $\beta$  Polyclonal Antibody



Western Blot analysis of A549 cells using Glucosidase II $\beta$  Polyclonal Antibody



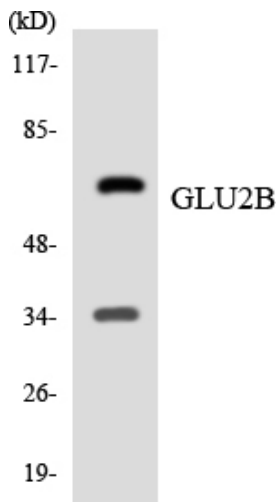
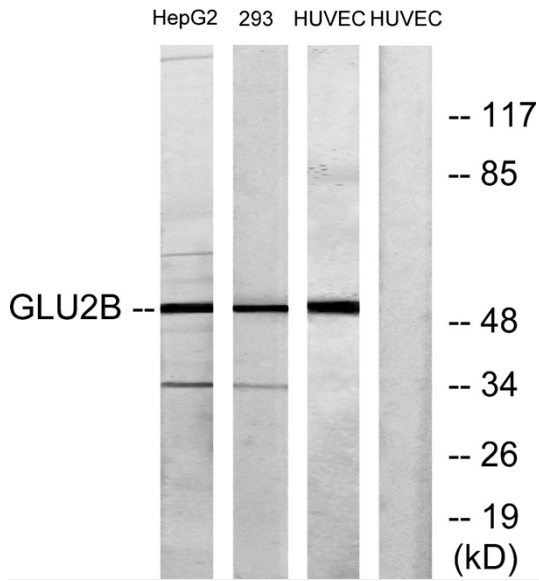
Immunofluorescence analysis of HeLa cells, using GLU2B Antibody. The picture on the right is blocked with the synthesized peptide.

Nanjing BYabs science technology Co.,Ltd

网址: [www.njbybio.com](http://www.njbybio.com)

官方热线: 025-5229-8998

监督电话: 15950492658



Western blot analysis of the lysates from 293 cells using GLU2B antibody.