



# ME3 Polyclonal Antibody

Catalog No	BYab-02674
Isotype	IgG
Reactivity	Human;Mouse
Applications	WB;IHC;IF;ELISA
Gene Name	ME3
Protein Name	NADP-dependent malic enzyme mitochondrial
Immunogen	The antiserum was produced against synthesized peptide derived from human ME3. AA range:545-594
Specificity	ME3 Polyclonal Antibody detects endogenous levels of ME3 protein.
Formulation	Liquid in PBS containing 50% glycerol, 0.5% BSA and 0.02% sodium azide.
Source	Polyclonal, Rabbit,IgG
Purification	The antibody was affinity-purified from rabbit antiserum by affinity-chromatography using epitope-specific immunogen.
Dilution	WB: 1/500 - 1/2000. IHC: 1/100 - 1/300. ELISA: 1/40000.. IF 1:50-200
Concentration	1 mg/ml
Purity	≥90%
Storage Stability	-20°C/1 year
Synonyms	ME3; NADP-dependent malic enzyme; mitochondrial; NADP-ME; Malic enzyme 3
Observed Band	67kD
Cell Pathway	Mitochondrion matrix.
Tissue Specificity	Expressed predominantly in organs with a low-division rate.
Function	catalytic activity:(S)-malate + NADP(+) = pyruvate + CO(2) + NADPH.,cofactor:Divalent metal cations. Prefers magnesium or manganese.,similarity:Belongs to the malic enzymes family.,tissue specificity:Expressed predominantly in organs with a low-division rate.,
Background	Malic enzyme catalyzes the oxidative decarboxylation of malate to pyruvate using either NAD <sup>+</sup> or NADP <sup>+</sup> as a cofactor. Mammalian tissues contain 3 distinct isoforms of malic enzyme: a cytosolic NADP(+)-dependent isoform, a mitochondrial NADP(+)-dependent isoform, and a mitochondrial NAD(+)-dependent isoform. This gene encodes a mitochondrial NADP(+)-dependent isoform. Multiple alternatively spliced transcript variants have

Nanjing BYabscience technology Co.,Ltd



been found for this gene, but the biological validity of some variants has not been determined. [provided by RefSeq, Jul 2008],

**matters needing attention**

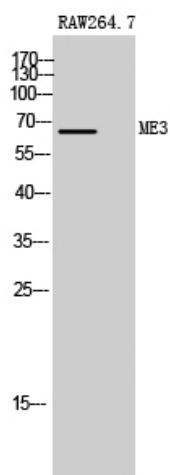
Avoid repeated freezing and thawing!

**Usage suggestions**

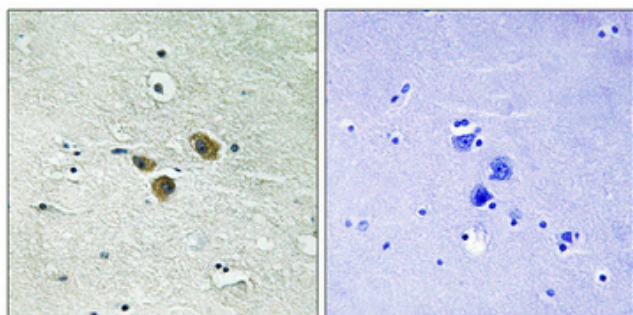
This product can be used in immunological reaction related experiments. For more information, please consult technical personnel.



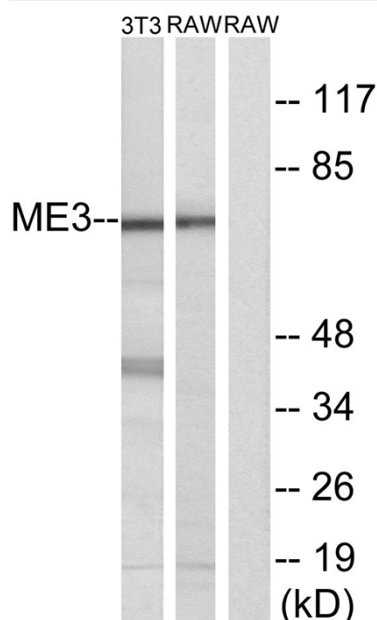
## Products Images



Western Blot analysis of RAW264.7 cells using ME3 Polyclonal Antibody



Immunohistochemical analysis of paraffin-embedded Human brain. Antibody was diluted at 1:100 (4° overnight). High-pressure and temperature Tris-EDTA, pH 8.0 was used for antigen retrieval. Negative control (right) obtained from antibody was pre-absorbed by immunogen peptide.



Western blot analysis of lysates from RAW264.7 and NIH/3T3 cells, using ME3 Antibody. The lane on the right is blocked with the synthesized peptide.

Nanjing BYabs science technology Co., Ltd