



MMP-10 Polyclonal Antibody

Catalog No	BYab-02677
Isotype	IgG
Reactivity	Human;Mouse;Rat
Applications	IHC;IF;WB;ELISA
Gene Name	MMP10
Protein Name	Stromelysin-2
Immunogen	The antiserum was produced against synthesized peptide derived from human MMP-10. AA range:361-410
Specificity	MMP-10 Polyclonal Antibody detects endogenous levels of MMP-10 protein.
Formulation	Liquid in PBS containing 50% glycerol, 0.5% BSA and 0.02% sodium azide.
Source	Polyclonal, Rabbit,IgG
Purification	The antibody was affinity-purified from rabbit antiserum by affinity-chromatography using epitope-specific immunogen.
Dilution	WB 1:500-2000 Immunohistochemistry: 1/100 - 1/300. Immunofluorescence: 1/200 - 1/1000. ELISA: 1/40000. Not yet tested in other applications.
Concentration	1 mg/ml
Purity	≥90%
Storage Stability	-20°C/1 year
Synonyms	MMP10; STMY2; Stromelysin-2; SL-2; Matrix metalloproteinase-10; MMP-10; Transin-2
Observed Band	54kD
Cell Pathway	Secreted, extracellular space, extracellular matrix .
Tissue Specificity	Coronary artery,Ovary,
Function	catalytic activity:Similar to stromelysin 1, but action on collagen types III, IV and V is weak.,cofactor:Binds 2 zinc ions per subunit.,cofactor:Calcium.,domain:The conserved cysteine present in the cysteine-switch motif binds the catalytic zinc ion, thus inhibiting the enzyme. The dissociation of the cysteine from the zinc ion upon the activation-peptide release activates the enzyme.,function:Can degrade fibronectin, gelatins of type I, III, IV, and V; weakly collagens III, IV, and V. Activates procollagenase.,similarity:Belongs to the peptidase M10A family.,similarity:Contains 4 hemopexin-like domains.,

Nanjing BYabscience technology Co.,Ltd

网址: www.njbybio.com

官方热线: 025-5229-8998

监督电话: 15950492658



Background

This gene encodes a member of the peptidase M10 family of matrix metalloproteinases (MMPs). Proteins in this family are involved in the breakdown of extracellular matrix in normal physiological processes, such as embryonic development, reproduction, and tissue remodeling, as well as in disease processes, such as arthritis and metastasis. The encoded preproprotein is proteolytically processed to generate the mature protease. This secreted protease breaks down fibronectin, laminin, elastin, proteoglycan core protein, gelatins, and several types of collagen. The gene is part of a cluster of MMP genes on chromosome 11. [provided by RefSeq, Jan 2016],

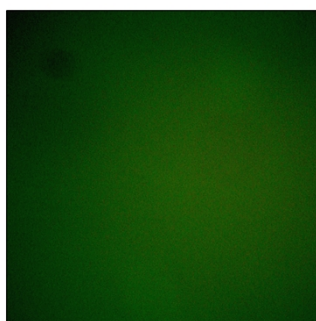
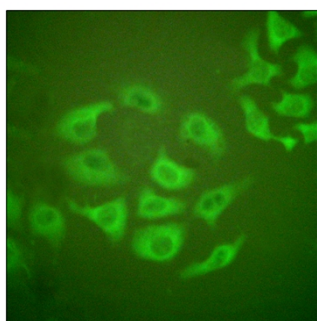
matters needing attention

Avoid repeated freezing and thawing!

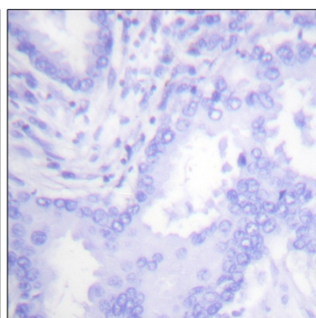
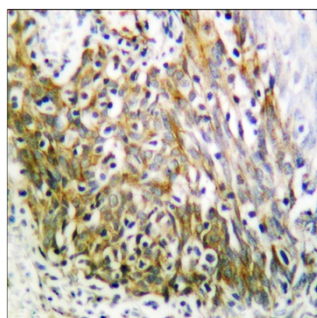
Usage suggestions

This product can be used in immunological reaction related experiments. For more information, please consult technical personnel.

Products Images



Immunofluorescence analysis of HepG2 cells, using MMP-10 Antibody. The picture on the right is blocked with the synthesized peptide.



Immunohistochemistry analysis of paraffin-embedded human lung carcinoma tissue, using MMP-10 Antibody. The picture on the right is blocked with the synthesized peptide.

Nanjing BYabscience technology Co.,Ltd

网址: www.njbybio.com

官方热线: 025-5229-8998

监督电话: 15950492658