



# NDUFS6 Polyclonal Antibody

Catalog No	BYab-02710
Isotype	IgG
Reactivity	Human;Mouse;Rat
Applications	IHC;IF;ELISA
Gene Name	NDUFS6
Protein Name	NADH dehydrogenase [ubiquinone] iron-sulfur protein 6 mitochondrial
Immunogen	The antiserum was produced against synthesized peptide derived from human NDUFS6. AA range:75-124
Specificity	NDUFS6 Polyclonal Antibody detects endogenous levels of NDUFS6 protein.
Formulation	Liquid in PBS containing 50% glycerol, 0.5% BSA and 0.02% sodium azide.
Source	Polyclonal, Rabbit,IgG
Purification	The antibody was affinity-purified from rabbit antiserum by affinity-chromatography using epitope-specific immunogen.
Dilution	IHC: 1/100 - 1/300. ELISA: 1/10000.. IF 1:50-200
Concentration	1 mg/ml
Purity	≥90%
Storage Stability	-20°C/1 year
Synonyms	NDUFS6; NADH dehydrogenase [ubiquinone] iron-sulfur protein 6; mitochondrial; Complex I-13kD-A; CI-13kD-A; NADH-ubiquinone oxidoreductase 13 kDa-A subunit
Observed Band	
Cell Pathway	Mitochondrion inner membrane ; Peripheral membrane protein ; Matrix side .
Tissue Specificity	Lung,Skin,
Function	function:Accessory subunit of the mitochondrial membrane respiratory chain NADH dehydrogenase (Complex I), that is believed to be not involved in catalysis. Complex I functions in the transfer of electrons from NADH to the respiratory chain. The immediate electron acceptor for the enzyme is believed to be ubiquinone.,similarity:Belongs to the complex I NDUFS6 subunit family.,subunit:Mammalian complex I is composed of 45 different subunits. This is a component of the iron-sulfur (IP) fragment of the enzyme.,

Nanjing BYabscience technology Co.,Ltd



## Background

This gene encodes a subunit of the NADH:ubiquinone oxidoreductase (complex I), which is the first enzyme complex in the electron transport chain of mitochondria. This complex functions in the transfer of electrons from NADH to the respiratory chain. The subunit encoded by this gene is one of seven subunits in the iron-sulfur protein fraction. Mutations in this gene cause mitochondrial complex I deficiency, a disease that causes a wide variety of clinical disorders, including neonatal disease and adult-onset neurodegenerative disorders.[provided by RefSeq, Oct 2009],

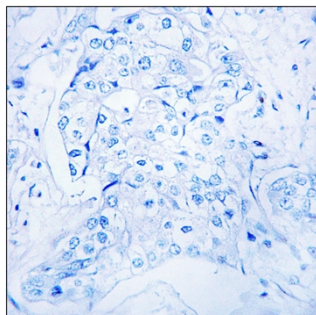
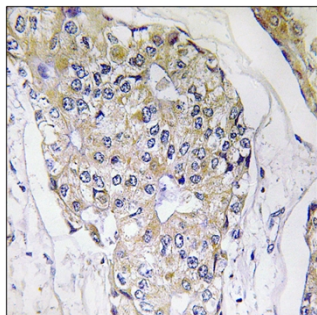
## matters needing attention

Avoid repeated freezing and thawing!

## Usage suggestions

This product can be used in immunological reaction related experiments. For more information, please consult technical personnel.

## Products Images



Immunohistochemistry analysis of paraffin-embedded human breast carcinoma tissue, using NDUFS6 Antibody. The picture on the right is blocked with the synthesized peptide.