



OTUB2 Polyclonal Antibody

Catalog No	BYab-02727
Isotype	IgG
Reactivity	Human;Mouse;Rat
Applications	WB;IHC;IF;ELISA
Gene Name	OTUB2
Protein Name	Ubiquitin thioesterase OTUB2
Immunogen	The antiserum was produced against synthesized peptide derived from human OTUB2. AA range:133-182
Specificity	OTUB2 Polyclonal Antibody detects endogenous levels of OTUB2 protein.
Formulation	Liquid in PBS containing 50% glycerol, 0.5% BSA and 0.02% sodium azide.
Source	Polyclonal, Rabbit,IgG
Purification	The antibody was affinity-purified from rabbit antiserum by affinity-chromatography using epitope-specific immunogen.
Dilution	WB: 1/500 - 1/2000. IHC: 1/100 - 1/300. ELISA: 1/20000.. IF 1:50-200
Concentration	1 mg/ml
Purity	≥90%
Storage Stability	-20°C/1 year
Synonyms	OTUB2; C14orf137; OTB2; OTU2; Ubiquitin thioesterase OTUB2; Deubiquitinating enzyme OTUB2; OTU domain-containing ubiquitin aldehyde-binding protein 2; Otubain-2; Ubiquitin-specific-processing protease OTUB2
Observed Band	27kD
Cell Pathway	nucleus,
Tissue Specificity	Widely expressed. Expressed at higher level in brain.
Function	function:Hydrolase that can remove conjugated ubiquitin from proteins in vitro and may therefore play an important regulatory role at the level of protein turnover by preventing degradation.,similarity:Belongs to the peptidase C65 family.,similarity:Contains 1 OTU domain.,tissue specificity:Widely expressed. Expressed at higher level in brain.,
Background	OTU deubiquitinase, ubiquitin aldehyde binding 2(OTUB2) Homo sapiens This gene encodes one of several deubiquitylating enzymes. Ubiquitin

Nanjing BYabs science technology Co.,Ltd



modification of proteins is needed for their stability and function; to reverse the process, deubiquityling enzymes remove ubiquitin. This protein contains an OTU domain and binds Ubal (ubiquitin aldehyde); an active cysteine protease site is present in the OTU domain. [provided by RefSeq, Aug 2011],

matters needing attention

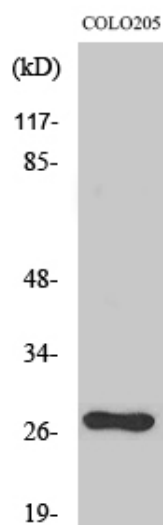
Avoid repeated freezing and thawing!

Usage suggestions

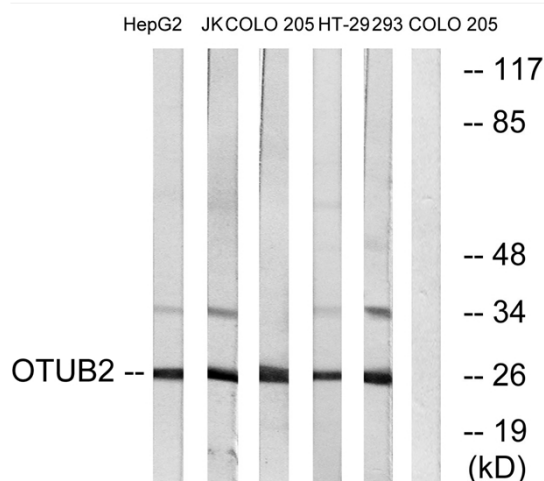
This product can be used in immunological reaction related experiments. For more information, please consult technical personnel.



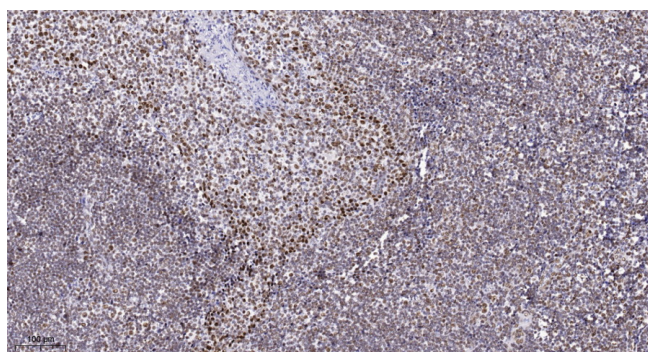
Products Images



Western Blot analysis of various cells using OTUB2 Polyclonal Antibody diluted at 1:2000



Western blot analysis of lysates from COLO, HepG2, Jurkat, 293, and HT-29 cells, using OTUB2 Antibody. The lane on the right is blocked with the synthesized peptide.



Immunohistochemical analysis of paraffin-embedded human tonsil. 1, Antibody was diluted at 1:200(4° overnight). 2, Tris-EDTA,pH9.0 was used for antigen retrieval. 3,Secondary antibody was diluted at 1:200(room temperature, 45min).

Nanjing BYabs science technology Co.,Ltd

网址: www.njbybio.com

官方热线: 025-5229-8998

监督电话: 15950492658