



# PSMD2 Polyclonal Antibody

<b>Catalog No</b>	BYab-02769
<b>Isotype</b>	IgG
<b>Reactivity</b>	Human;Mouse;Rat
<b>Applications</b>	WB;IHC;IF;ELISA
<b>Gene Name</b>	PSMD2
<b>Protein Name</b>	26S proteasome non-ATPase regulatory subunit 2
<b>Immunogen</b>	The antiserum was produced against synthesized peptide derived from human PSMD2. AA range:101-150
<b>Specificity</b>	PSMD2 Polyclonal Antibody detects endogenous levels of PSMD2 protein.
<b>Formulation</b>	Liquid in PBS containing 50% glycerol, 0.5% BSA and 0.02% sodium azide.
<b>Source</b>	Polyclonal, Rabbit,IgG
<b>Purification</b>	The antibody was affinity-purified from rabbit antiserum by affinity-chromatography using epitope-specific immunogen.
<b>Dilution</b>	Western Blot: 1/500 - 1/2000. Immunohistochemistry: 1/100 - 1/300. Immunofluorescence: 1/200 - 1/1000. ELISA: 1/20000. Not yet tested in other applications.
<b>Concentration</b>	1 mg/ml
<b>Purity</b>	≥90%
<b>Storage Stability</b>	-20°C/1 year
<b>Synonyms</b>	PSMD2; TRAP2; 26S proteasome non-ATPase regulatory subunit 2; 26S proteasome regulatory subunit RPN1; 26S proteasome regulatory subunit S2; 26S proteasome subunit p97; Protein 55.11; Tumor necrosis factor type 1 receptor-associated protein
<b>Observed Band</b>	100kD
<b>Cell Pathway</b>	proteasome complex,nucleus,nucleoplasm,cytosol,proteasome regulatory particle,proteasome regulatory particle, base subcomplex,membrane,proteasome accessory complex,proteasome storage granule,extracellular exosome,
<b>Tissue Specificity</b>	Found in skeletal muscle, liver, heart, brain, kidney, pancreas, lung and placenta.
<b>Function</b>	function:Acts as a regulatory subunit of the 26 proteasome which is involved in the ATP-dependent degradation of ubiquitinated proteins.,function:Binds to the intracellular domain of tumor necrosis factor type 1 receptor. The binding domain of TRAP1 and TRAP2 resides outside the death domain of TNFR1.,similarity:Belongs to the proteasome subunit S2

**Nanjing BYabscience technology Co.,Ltd**



family.,similarity:Contains 7 PC repeats.,tissue specificity:Found in skeletal muscle, liver, heart, brain, kidney, pancreas, lung and placenta.,

#### Background

The 26S proteasome is a multicatalytic proteinase complex with a highly ordered structure composed of 2 complexes, a 20S core and a 19S regulator. The 20S core is composed of 4 rings of 28 non-identical subunits; 2 rings are composed of 7 alpha subunits and 2 rings are composed of 7 beta subunits. The 19S regulator is composed of a base, which contains 6 ATPase subunits and 2 non-ATPase subunits, and a lid, which contains up to 10 non-ATPase subunits. Proteasomes are distributed throughout eukaryotic cells at a high concentration and cleave peptides in an ATP/ubiquitin-dependent process in a non-lysosomal pathway. An essential function of a modified proteasome, the immunoproteasome, is the processing of class I MHC peptides. This gene encodes one of the non-ATPase subunits of the 19S regulator lid. In addition to participation in proteasome function, this subunit may also participate

#### matters needing attention

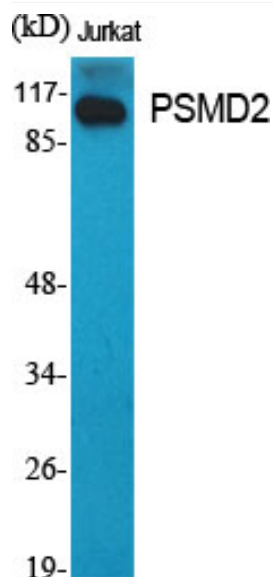
Avoid repeated freezing and thawing!

#### Usage suggestions

This product can be used in immunological reaction related experiments. For more information, please consult technical personnel.



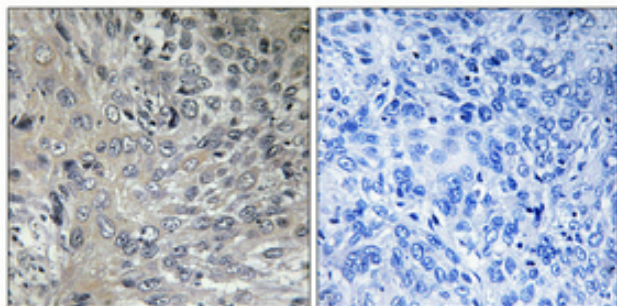
## Products Images



Western Blot analysis of various cells using PSMD2 Polyclonal Antibody



Western Blot analysis of 293 cells using PSMD2 Polyclonal Antibody



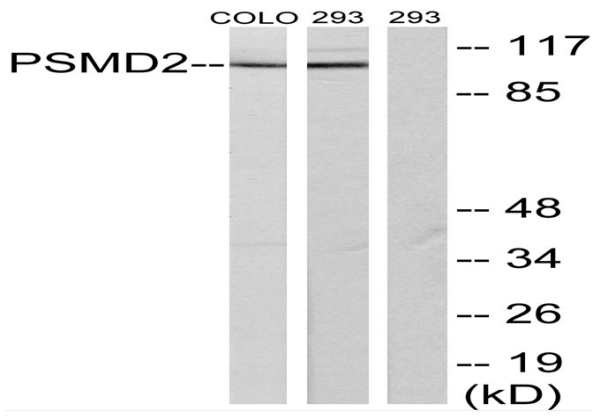
Immunohistochemical analysis of paraffin-embedded Human cervix cancer. Antibody was diluted at 1:100 (4° overnight). High-pressure and temperature Tris-EDTA, pH 8.0 was used for antigen retrieval. Negative control (right) obtained from antibody was pre-absorbed by immunogen peptide.

**Nanjing BYabs science technology Co., Ltd**

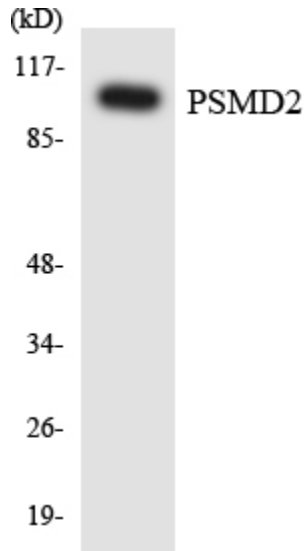
网址: [www.njbybio.com](http://www.njbybio.com)

官方热线: 025-5229-8998

监督电话: 15950492658



Western blot analysis of lysates from COLO205 and 293 cells, using PSMD2 Antibody. The lane on the right is blocked with the synthesized peptide.



Western blot analysis of the lysates from HepG2 cells using PSMD2 antibody.