



# Uba5 Polyclonal Antibody

<b>Catalog No</b>	BYab-02810
<b>Isotype</b>	IgG
<b>Reactivity</b>	Human;Mouse;Rat
<b>Applications</b>	WB;IHC;IF;ELISA
<b>Gene Name</b>	UBA5
<b>Protein Name</b>	Ubiquitin-like modifier-activating enzyme 5
<b>Immunogen</b>	The antiserum was produced against synthesized peptide derived from human UBA5. AA range:281-330
<b>Specificity</b>	Uba5 Polyclonal Antibody detects endogenous levels of Uba5 protein.
<b>Formulation</b>	Liquid in PBS containing 50% glycerol, 0.5% BSA and 0.02% sodium azide.
<b>Source</b>	Polyclonal, Rabbit,IgG
<b>Purification</b>	The antibody was affinity-purified from rabbit antiserum by affinity-chromatography using epitope-specific immunogen.
<b>Dilution</b>	WB: 1/500 - 1/2000. IHC: 1/100 - 1/300. ELISA: 1/5000.. IF 1:50-200
<b>Concentration</b>	1 mg/ml
<b>Purity</b>	≥90%
<b>Storage Stability</b>	-20°C/1 year
<b>Synonyms</b>	UBA5; UBE1DC1; Ubiquitin-like modifier-activating enzyme 5; Ubiquitin-activating enzyme 5; ThiFP1; UFM1-activating enzyme; Ubiquitin-activating enzyme E1 domain-containing protein 1
<b>Observed Band</b>	45kD
<b>Cell Pathway</b>	Cytoplasm . Nucleus . Endoplasmic reticulum membrane . Golgi apparatus . Localizes mainly in the cytoplasm, while it localizes to the nucleus in presence of SUMO2 (PubMed:18442052). Interaction with GABARAPL2 promotes localization to the endoplasmic reticulum membrane (PubMed:30990354). .
<b>Tissue Specificity</b>	Widely expressed.
<b>Function</b>	function:E1-like enzyme which activates UFM1.,similarity:Belongs to the ubiquitin-activating E1 family. UBA5 subfamily.,
<b>Background</b>	This gene encodes a member of the E1-like ubiquitin-activating enzyme family. This protein activates ubiquitin-fold modifier 1, a ubiquitin-like post-translational modifier protein, via the formation of a high-energy thioester bond. Alternative splicing results in multiple transcript variants. A pseudogene of this gene has been

**Nanjing BYabs science technology Co.,Ltd**



identified on chromosome 1. [provided by RefSeq, Feb 2016],

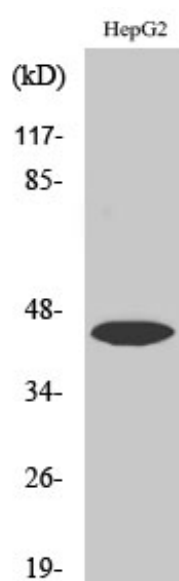
**matters needing attention**

Avoid repeated freezing and thawing!

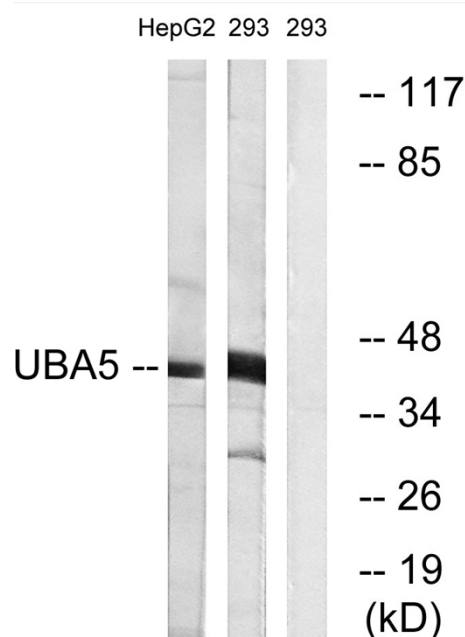
**Usage suggestions**

This product can be used in immunological reaction related experiments. For more information, please consult technical personnel.

## Products Images



Western blot analysis of various cells using Uba5 Polyclonal Antibody. Secondary antibody(catalog#:RS0002) was diluted at 1:20000



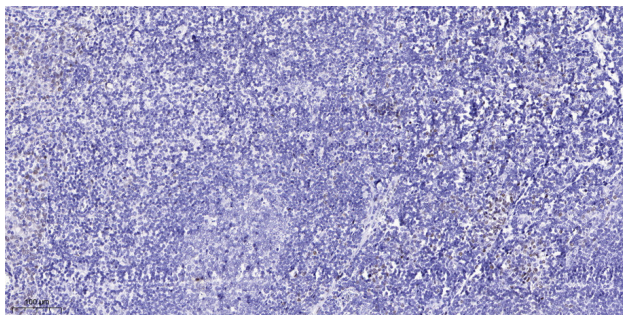
Western blot analysis of lysates from HepG2 and 293 cells, using UBA5 Antibody. The lane on the right is blocked with the synthesized peptide.

**Nanjing BYabs science technology Co.,Ltd**

网址: [www.njbybio.com](http://www.njbybio.com)

官方热线: 025-5229-8998

监督电话: 15950492658



Immunohistochemical analysis of paraffin-embedded human tonsil. 1, Antibody was diluted at 1:200(4° overnight). 2, Tris-EDTA,pH9.0 was used for antigen retrieval. 3,Secondary antibody was diluted at 1:200(room temperature, 45min).