



UFD2 Polyclonal Antibody

Catalog No	BYab-02824
Isotype	IgG
Reactivity	Human;Mouse
Applications	IHC;IF;ELISA
Gene Name	UBE4B
Protein Name	Ubiquitin conjugation factor E4 B
Immunogen	Synthesized peptide derived from the Internal region of human UFD2.
Specificity	UFD2 Polyclonal Antibody detects endogenous levels of UFD2 protein.
Formulation	Liquid in PBS containing 50% glycerol, 0.5% BSA and 0.02% sodium azide.
Source	Polyclonal, Rabbit,IgG
Purification	The antibody was affinity-purified from rabbit antiserum by affinity-chromatography using epitope-specific immunogen.
Dilution	IHC: 1/100 - 1/300. ELISA: 1/5000.. IF 1:50-200
Concentration	1 mg/ml
Purity	≥90%
Storage Stability	-20°C/1 year
Synonyms	UBE4B; HDNB1; KIAA0684; UFD2; Ubiquitin conjugation factor E4 B; Homozygously deleted in neuroblastoma 1; Ubiquitin fusion degradation protein 2
Observed Band	
Cell Pathway	Cytoplasm . Nucleus .
Tissue Specificity	Expressed in differentiated myotubes (at protein level) (PubMed:17369820). Highest expression in ovary, testis, heart and skeletal muscle (PubMed:11802788). Expression is low in colon, thymus and peripheral blood leukocytes (PubMed:11802788). Almost undetectable in lung and spleen (PubMed:11802788).
Function	function: Binds to the ubiquitin moieties of preformed conjugates and catalyzes ubiquitin chain assembly in conjunction with E1, E2, and E3.,PTM: Proteolytically cleaved by caspases during apoptosis. Cleaved efficiently at Asp-123 by caspase-6 and granzyme B. Cleaved with approximately 10-fold less efficiency at Asp-109 by caspase-3 and caspase-7.,similarity: Belongs to the ubiquitin conjugation factor E4 family.,similarity: Contains 1 U-box domain.,subunit: Interacts with VCP.,tissue specificity: Highest expression in ovary, testis, heart and skeletal muscle. Expression is low in colon, thymus and peripheral blood leukocytes.

Nanjing BYabscience technology Co.,Ltd



Almost undetectable in lung and spleen.,

Background

The modification of proteins with ubiquitin is an important cellular mechanism for targeting abnormal or short-lived proteins for degradation. Ubiquitination involves at least three classes of enzymes: ubiquitin-activating enzymes, or E1s, ubiquitin-conjugating enzymes, or E2s, and ubiquitin-protein ligases, or E3s. This gene encodes an additional conjugation factor, E4, which is involved in multiubiquitin chain assembly. This gene is also the strongest candidate in the neuroblastoma tumor suppressor genes. Alternatively spliced transcript variants encoding distinct isoforms have been found for this gene. [provided by RefSeq, Jul 2008],

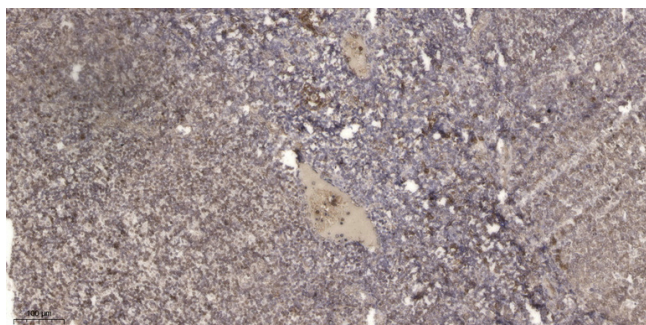
matters needing attention

Avoid repeated freezing and thawing!

Usage suggestions

This product can be used in immunological reaction related experiments. For more information, please consult technical personnel.

Products Images



Immunohistochemical analysis of paraffin-embedded human tonsil. 1, Antibody was diluted at 1:200(4° overnight). 2, Tris-EDTA,pH9.0 was used for antigen retrieval. 3,Secondary antibody was diluted at 1:200(room temperature, 45min).