



# USP53 Polyclonal Antibody

<b>Catalog No</b>	BYab-02843
<b>Isotype</b>	IgG
<b>Reactivity</b>	Human;Rat;Mouse;
<b>Applications</b>	WB;IHC;IF;ELISA
<b>Gene Name</b>	USP53
<b>Protein Name</b>	Inactive ubiquitin carboxyl-terminal hydrolase 53
<b>Immunogen</b>	The antiserum was produced against synthesized peptide derived from human USP53. AA range:951-1000
<b>Specificity</b>	USP53 Polyclonal Antibody detects endogenous levels of USP53 protein.
<b>Formulation</b>	Liquid in PBS containing 50% glycerol, 0.5% BSA and 0.02% sodium azide.
<b>Source</b>	Polyclonal, Rabbit,IgG
<b>Purification</b>	The antibody was affinity-purified from rabbit antiserum by affinity-chromatography using epitope-specific immunogen.
<b>Dilution</b>	WB 1:500-2000 IHC: 1/100 - 1/300. ELISA: 1/10000.. IF 1:50-200
<b>Concentration</b>	1 mg/ml
<b>Purity</b>	≥90%
<b>Storage Stability</b>	-20°C/1 year
<b>Synonyms</b>	USP53; KIAA1350; Inactive ubiquitin carboxyl-terminal hydrolase 53; Inactive ubiquitin-specific peptidase 53
<b>Observed Band</b>	
<b>Cell Pathway</b>	Cell junction, tight junction .
<b>Tissue Specificity</b>	Expressed predominantly in skeletal muscle and heart.
<b>Function</b>	caution:Although the active site residues are conserved, lacks the conserved His residue which is normally found 9 residues before the catalytic His.,function:Has no peptidase activity.,similarity:Belongs to the peptidase C19 family.,tissue specificity:Expressed predominantly in skeletal muscle and heart.,
<b>Background</b>	caution:Although the active site residues are conserved, lacks the conserved His residue which is normally found 9 residues before the catalytic His.,function:Has no peptidase activity.,similarity:Belongs to the peptidase C19 family.,tissue specificity:Expressed predominantly in skeletal muscle and heart.,

Nanjing BYabscience technology Co.,Ltd



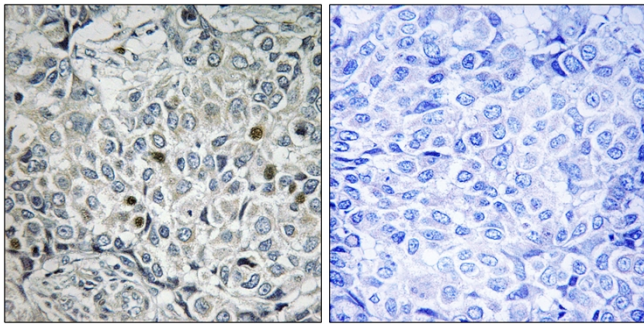
**matters needing attention**

Avoid repeated freezing and thawing!

**Usage suggestions**

This product can be used in immunological reaction related experiments. For more information, please consult technical personnel.

**Products Images**



Immunohistochemistry analysis of paraffin-embedded human breast carcinoma, using USP53 Antibody. The picture on the right is blocked with the synthesized peptide.