



Amylase Polyclonal Antibody

Catalog No	BYab-02858
Isotype	IgG
Reactivity	Human;Mouse;Rat
Applications	WB;IHC;IF;ELISA
Gene Name	AMY1A/AMY1B/AMY1C/AMY2A/AMY2B
Protein Name	Alpha-amylase 1/Pancreatic alpha-amylase/Alpha-amylase 2B
Immunogen	The antiserum was produced against synthesized peptide derived from the N-terminal region of human AMY1/2. AA range:61-110
Specificity	Amylase Polyclonal Antibody detects endogenous levels of Amylase protein.
Formulation	Liquid in PBS containing 50% glycerol, 0.5% BSA and 0.02% sodium azide.
Source	Polyclonal, Rabbit,IgG
Purification	The antibody was affinity-purified from rabbit antiserum by affinity-chromatography using epitope-specific immunogen.
Dilution	WB: 1/500 - 1/2000. IHC-p: 1:100-300 ELISA: 1/20000.. IF 1:50-200
Concentration	1 mg/ml
Purity	≥90%
Storage Stability	-20°C/1 year
Synonyms	AMY1A; AMY1; AMY1B; AMY1; AMY1C; AMY1; Alpha-amylase 1; 1,4-alpha-D-glucan glucanohydrolase 1; Salivary alpha-amylase; AMY2A; Pancreatic alpha-amylase; PA;1,4-alpha-D-glucan glucanohydrolase; AMY2B; Alpha-amylase 2B; 1,4-alpha-D-glucan glucanohydrolase 2B; Carcinoid alpha-amylase
Observed Band	60kD
Cell Pathway	extracellular space,extracellular exosome,
Tissue Specificity	Glandular pool- thyroid,Saliva,Thyroid,
Function	catalytic activity:Endohydrolysis of (1->4)-alpha-D-glucosidic linkages in oligosaccharides and polysaccharides.,cofactor:Binds 1 calcium ion per subunit.,cofactor:Binds 1 chloride ion per subunit.,online information:Amylase entry,similarity:Belongs to the glycosyl hydrolase 13 family.,subunit:Monomer.,

Nanjing BYabs science technology Co.,Ltd

**Background**

Amylases are secreted proteins that hydrolyze 1,4- α -glucoside bonds in oligosaccharides and polysaccharides, and thus catalyze the first step in digestion of dietary starch and glycogen. The human genome has a cluster of several amylase genes that are expressed at high levels in either salivary gland or pancreas. This gene encodes an amylase isoenzyme produced by the salivary gland. Alternative splicing results in multiple transcript variants encoding the same protein. [provided by RefSeq, Jul 2008],

matters needing attention

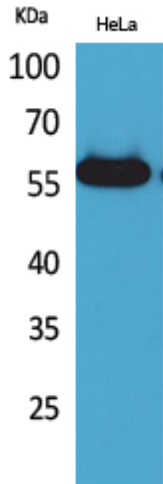
Avoid repeated freezing and thawing!

Usage suggestions

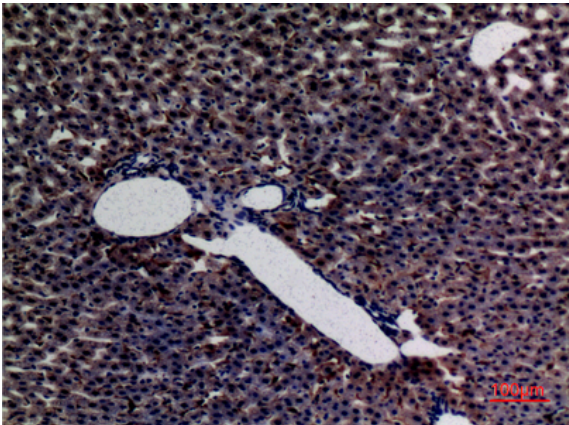
This product can be used in immunological reaction related experiments. For more information, please consult technical personnel.



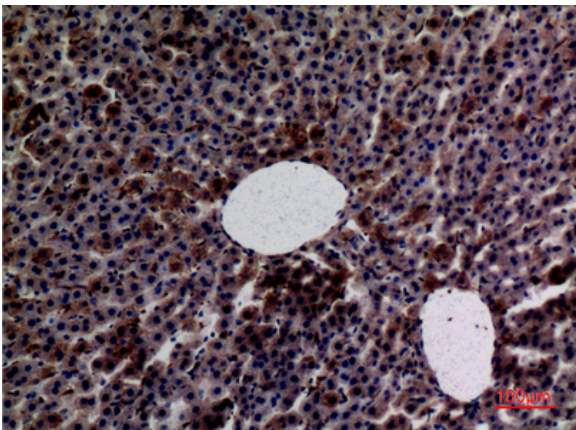
Products Images



Western Blot analysis of HeLa cells using Amylase Polyclonal Antibody. Secondary antibody(catalog#:RS0002) was diluted at 1:20000



Immunohistochemical analysis of paraffin-embedded rat-liver, antibody was diluted at 1:100



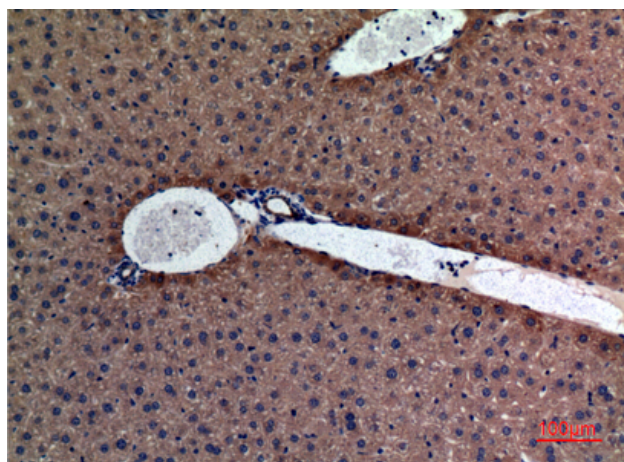
Immunohistochemical analysis of paraffin-embedded rat-liver, antibody was diluted at 1:100

Nanjing BYabs science technology Co.,Ltd

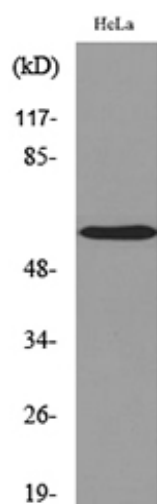
网址: www.njbybio.com

官方热线: 025-5229-8998

监督电话: 15950492658



Immunohistochemical analysis of paraffin-embedded mouse-liver, antibody was diluted at 1:100



Western blot analysis of lysate from HeLa cells, using AMY1/2 Antibody.