



ASAH3L Polyclonal Antibody

Catalog No	BYab-02887
Isotype	IgG
Reactivity	Human;Mouse;Monkey
Applications	WB;IHC;IF;ELISA
Gene Name	ACER2
Protein Name	Alkaline ceramidase 2
Immunogen	Synthesized peptide derived from ASAH3L . at AA range: 50-130
Specificity	ASAH3L Polyclonal Antibody detects endogenous levels of ASAH3L protein.
Formulation	Liquid in PBS containing 50% glycerol, 0.5% BSA and 0.02% sodium azide.
Source	Polyclonal, Rabbit,IgG
Purification	The antibody was affinity-purified from rabbit antiserum by affinity-chromatography using epitope-specific immunogen.
Dilution	WB: 1/500 - 1/2000. IHC-p: 1:100-1:300. ELISA: 1/10000.. IF 1:50-200
Concentration	1 mg/ml
Purity	≥90%
Storage Stability	-20°C/1 year
Synonyms	ACER2; ASAH3L; PP11646; Alkaline ceramidase 2; AlkCDase 2; Alkaline CDase 2; haCER2; Acylsphingosine deacylase 3-like; N-acylsphingosine amidohydrolase 3-like
Observed Band	33kD
Cell Pathway	Golgi apparatus membrane ; Multi-pass membrane protein .
Tissue Specificity	Highly expressed in placenta.
Function	catalytic activity:N-acylsphingosine + H(2)O = a carboxylate + sphingosine.,function:Hydrolyzes the sphingolipid ceramide into sphingosine and free fatty acid.,similarity:Belongs to the alkaline ceramidase family.,
Background	The sphingolipid metabolite sphingosine-1-phosphate promotes cell proliferation and survival, whereas its precursor, sphingosine, has the opposite effect. The ceramidase ACER2 hydrolyzes very long chain ceramides to generate sphingosine (Xu et al., 2006 [PubMed 16940153]).[supplied by OMIM, Jul 2010],

Nanjing BYabscience technology Co.,Ltd

网址: www.njbybio.com

官方热线: 025-5229-8998

监督电话: 15950492658



matters needing attention

Avoid repeated freezing and thawing!

Usage suggestions

This product can be used in immunological reaction related experiments. For more information, please consult technical personnel.

Nanjing BYabscience technology Co.,Ltd

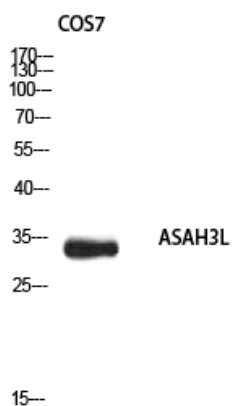
网址: www.njbybio.com

官方热线: 025-5229-8998

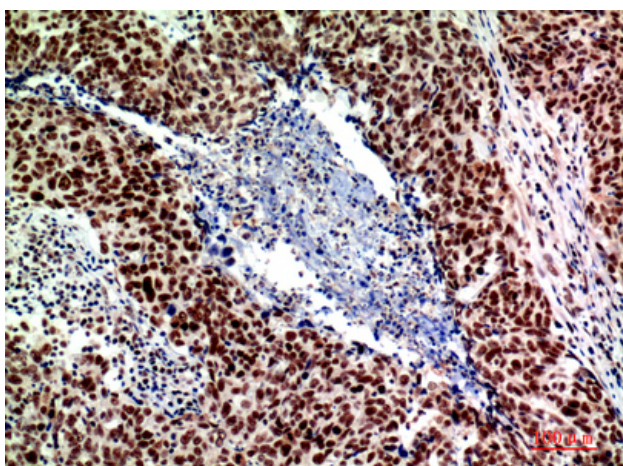
监督电话: 15950492658



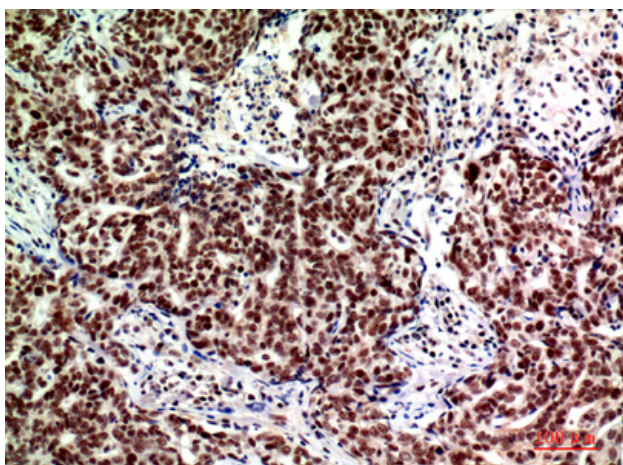
Products Images



Western blot analysis of COS7 using ASAH3L antibody. Secondary antibody(catalog#:RS0002) was diluted at 1:20000



Immunohistochemical analysis of paraffin-embedded human-breast-cancer, antibody was diluted at 1:200



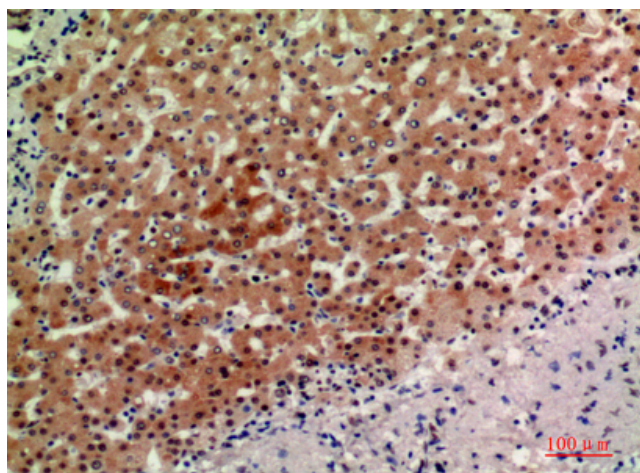
Immunohistochemical analysis of paraffin-embedded human-breast-cancer, antibody was diluted at 1:200

Nanjing BYabs science technology Co.,Ltd

网址: www.njbybio.com

官方热线: 025-5229-8998

监督电话: 15950492658



Immunohistochemical analysis of paraffin-embedded human-liver, antibody was diluted at 1:200