



# Eg5 mouse mAb

<b>Catalog No</b>	BYab-02956
<b>Isotype</b>	IgG
<b>Reactivity</b>	Human
<b>Applications</b>	WB;IP;ICC
<b>Gene Name</b>	kif11
<b>Protein Name</b>	
<b>Immunogen</b>	Purified recombinant human Eg5 protein fragments expressed in E.coli.
<b>Specificity</b>	This antibody detects endogenous levels of Eg5 and does not cross-react with related proteins.
<b>Formulation</b>	Liquid in PBS containing 50% glycerol, 0.5% BSA and 0.02% sodium azide.
<b>Source</b>	Monoclonal, Mouse
<b>Purification</b>	The antibody was affinity-purified from mouse ascites by affinity-chromatography using epitope-specific immunogen.
<b>Dilution</b>	wb 1:1000 icc 1:200
<b>Concentration</b>	1 mg/ml
<b>Purity</b>	≥90%
<b>Storage Stability</b>	-20°C/1 year
<b>Synonyms</b>	EG5;HKSP;KIF11;KIF11_HUMAN;kinesin family member 11;Kinesin like protein 1;Kinesin like spindle protein HKSP;Kinesin-like protein 1;Kinesin-like protein KIF11;Kinesin-like spindle protein HKSP;Kinesin-related motor protein Eg5;KNSL1;MCLMR;Thyroid receptor interacting protein 5;Thyroid receptor-interacting protein 5;TR-interacting protein 5; TRIP-5;TRIP5.
<b>Observed Band</b>	130kD
<b>Cell Pathway</b>	Cytoplasm . Cytoplasm, cytoskeleton, spindle pole .
<b>Tissue Specificity</b>	Brain,Epithelium,Lung,
<b>Function</b>	function:Motor protein required for establishing a bipolar spindle. Blocking of KIF11 prevents centrosome migration and arrest cells in mitosis with monoastal microtubule arrays.,PTM:Phosphorylated exclusively on serine during S phase, but on both serine and Thr-926 during mitosis, so controlling the association of KIF11 with the spindle apparatus (probably during early prophase). Phosphorylated upon DNA damage, probably by ATM or ATR.,similarity:Belongs

**Nanjing BYabscience technology Co.,Ltd**



	to the kinesin-like protein family. BimC subfamily.,similarity:Contains 1 kinesin-motor domain.,subunit:Interacts with the thyroid hormone receptor in the presence of thyroid hormone. Component of a large chromatin remodeling complex, at least composed of MYSM1, PCAF, RBM10 and KIF11/TRIP5.,
<b>Background</b>	kinesin family member 11(KIF11) Homo sapiens This gene encodes a motor protein that belongs to the kinesin-like protein family. Members of this protein family are known to be involved in various kinds of spindle dynamics. The function of this gene product includes chromosome positioning, centrosome separation and establishing a bipolar spindle during cell mitosis. [provided by RefSeq, Jul 2008],
<b>matters needing attention</b>	Avoid repeated freezing and thawing!
<b>Usage suggestions</b>	This product can be used in immunological reaction related experiments. For more information, please consult technical personnel.

Nanjing BYabscience technology Co.,Ltd

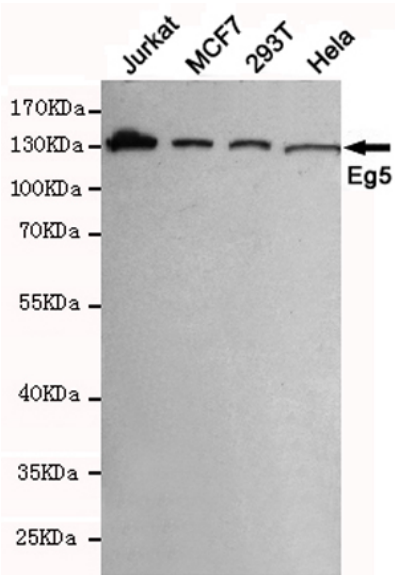
网址: [www.njbybio.com](http://www.njbybio.com)

官方热线: 025-5229-8998

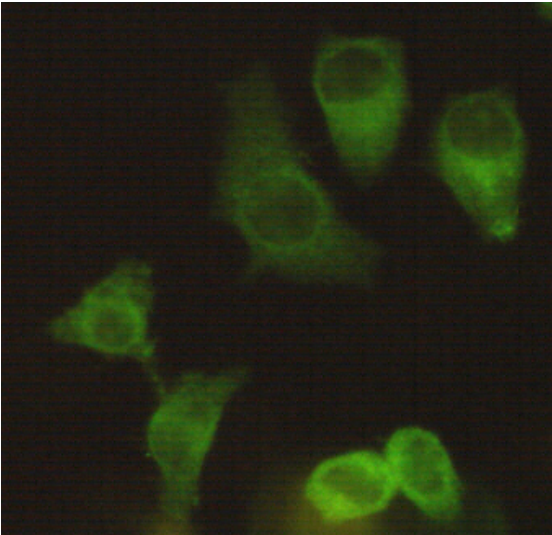
监督电话: 15950492658



## Products Images



Western blot detection of Eg5 in MCF7,293T,Jurkat and HeLa cell lysates using Eg5 mouse mAb (1:1000 diluted).Predicted band size:130KDa.Observed band size:130KDa.



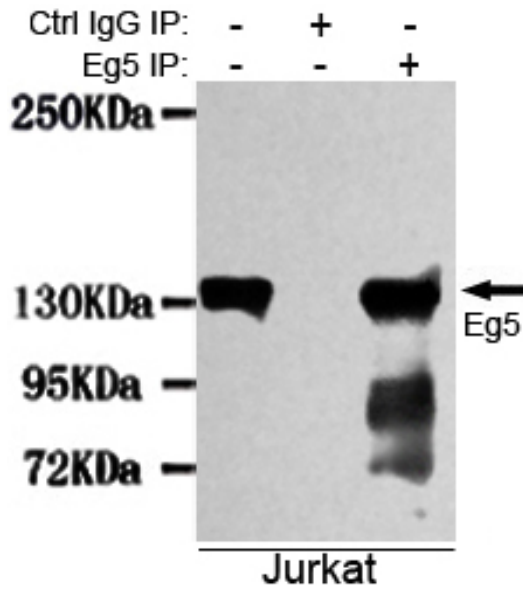
Immunocytochemistry staining of HeLa using Eg5 mouse mAb (1:200).

Nanjing BYabs science technology Co.,Ltd

网址: [www.njbybio.com](http://www.njbybio.com)

官方热线: 025-5229-8998

监督电话: 15950492658



Immunoprecipitation analysis of Jurkat cell lysates using Eg5 mouse mAb.