



β II Tubulin Polyclonal Antibody

Catalog No	BYab-03003
Isotype	IgG
Reactivity	Human;Mouse;Rat
Applications	WB; IF
Gene Name	TUBB2A
Protein Name	Tubulin beta-2A chain
Immunogen	Synthetic Peptide of β II Tubulin AA range: 80-130
Specificity	The antibody detects endogenous β II tubulin protein.
Formulation	PBS, pH 7.4, containing 0.5%BSA, 0.02% sodium azide as Preservative and 50% Glycerol.
Source	Polyclonal, Rabbit,IgG
Purification	The antibody was affinity-purified from rabbit antiserum by affinity-chromatography using specific immunogen.
Dilution	WB 1:500-2000; IF/ICC 1:100-500
Concentration	1 mg/ml
Purity	≥90%
Storage Stability	-20°C/1 year
Synonyms	Tubulin beta-2A chain
Observed Band	50kD
Cell Pathway	Cytoplasm, cytoskeleton .
Tissue Specificity	High expression in brain, where it represents 30% of all beta-tubulins.
Function	function:Tubulin is the major constituent of microtubules. It binds two moles of GTP, one at an exchangeable site on the beta chain and one at a non-exchangeable site on the alpha-chain.,similarity:Belongs to the tubulin family.,subunit:Dimer of alpha and beta chains.,
Background	Microtubules, key participants in processes such as mitosis and intracellular transport, are composed of heterodimers of alpha- and beta-tubulins. The protein encoded by this gene is a beta-tubulin. Defects in this gene are associated with complex cortical dysplasia with other brain malformations-5. Two transcript variants encoding distinct isoforms have been found for this gene. [provided by RefSeq, Jul 2015],

Nanjing BYabscience technology Co.,Ltd



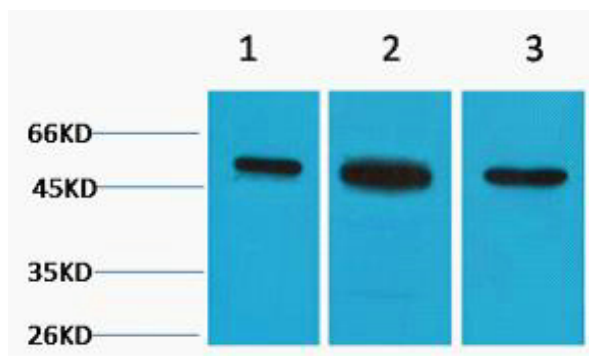
matters needing attention

Avoid repeated freezing and thawing!

Usage suggestions

This product can be used in immunological reaction related experiments. For more information, please consult technical personnel.

Products Images



Western blot analysis of 1) Hela, 2) 3T3, 3) Rat Kidney tissue, diluted at 1:3000. Secondary antibody(catalog#:RS0002) was diluted at 1:20000

Nanjing BYabs science technology Co.,Ltd

网址: www.njbybio.com

官方热线: 025-5229-8998

监督电话: 15950492658