



# Tensin-2 (phospho Tyr483) Polyclonal Antibody

<b>Catalog No</b>	BYab-03024
<b>Isotype</b>	IgG
<b>Reactivity</b>	Human;Mouse
<b>Applications</b>	WB;ELISA
<b>Gene Name</b>	TENC1
<b>Protein Name</b>	Tensin-like C1 domain-containing phosphatase
<b>Immunogen</b>	Synthesized phospho-peptide around the phosphorylation site of human Tensin-2 (phospho Tyr483)
<b>Specificity</b>	Phospho-Tensin-2 (Y483) Polyclonal Antibody detects endogenous levels of Tensin-2 protein only when phosphorylated at Y483.
<b>Formulation</b>	Liquid in PBS containing 50% glycerol, 0.5% BSA and 0.02% sodium azide.
<b>Source</b>	Polyclonal, Rabbit,IgG
<b>Purification</b>	The antibody was affinity-purified from rabbit antiserum by affinity-chromatography using epitope-specific immunogen.
<b>Dilution</b>	Western Blot: 1/500 - 1/2000. ELISA: 1/10000. Not yet tested in other applications.
<b>Concentration</b>	1 mg/ml
<b>Purity</b>	≥90%
<b>Storage Stability</b>	-20°C/1 year
<b>Synonyms</b>	TENC1; KIAA1075; TNS2; Tensin-like C1 domain-containing phosphatase; C1 domain-containing phosphatase and tensin homolog; C1-TEN; Tensin-2
<b>Observed Band</b>	152kD
<b>Cell Pathway</b>	Cell junction, focal adhesion . Cell membrane ; Peripheral membrane protein ; Cytoplasmic side . Detected at the end of actin stress fibers. Detected in cytoplasmic punctate bodies (PubMed:22019427). .
<b>Tissue Specificity</b>	Detected in heart, kidney, brain, thymus, spleen, liver, placenta, lung, skeletal muscle and small intestine.
<b>Function</b>	function:Regulates cell motility and proliferation. May have phosphatase activity. Reduces AKT1 phosphorylation. Lowers AKT1 kinase activity and interferes with AKT1 signaling.,similarity:Contains 1 C2 tensin-type domain.,similarity:Contains 1 phorbol-ester/DAG-type zinc finger.,similarity:Contains 1 phosphatase tensin-type domain.,similarity:Contains 1 SH2 domain.,subcellular location:Detected at the end of actin stress fibers.,subunit:Interacts with AXL.,tissue specificity:Detected in heart, kidney, brain, thymus, spleen, liver, placenta, lung, skeletal muscle and small intestine.,

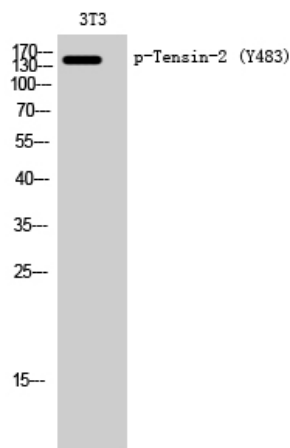
**Nanjing BYabscience technology Co.,Ltd**



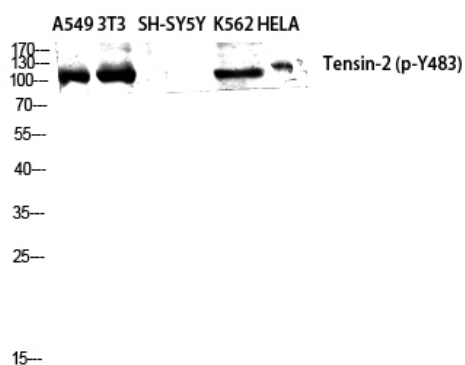
Background	The protein encoded by this gene belongs to the tensin family. Tensin is a focal adhesion molecule that binds to actin filaments and participates in signaling pathways. This protein plays a role in regulating cell migration. Alternative splicing occurs at this locus and three transcript variants encoding three distinct isoforms have been identified. [provided by RefSeq, Jul 2008],
matters needing attention	Avoid repeated freezing and thawing!
Usage suggestions	This product can be used in immunological reaction related experiments. For more information, please consult technical personnel.



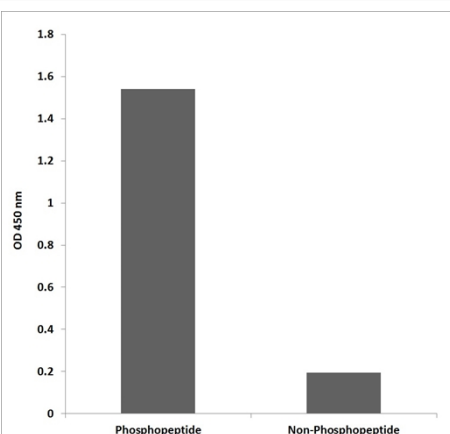
## Products Images



Western Blot analysis of 3T3 cells using Phospho-Tensin-2 (Y483) Polyclonal Antibody diluted at 1:2000



Western Blot analysis of A549 NIH-3T3 SH-SY5Y K562 HELA cells using Phospho-Tensin-2 (Y483) Polyclonal Antibody diluted at 1:2000



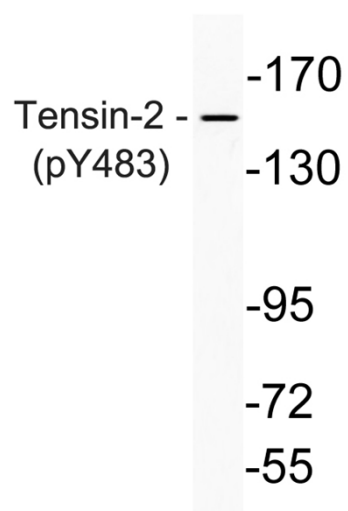
Enzyme-Linked Immunosorbent Assay (Phospho-ELISA) for Immunogen Phosphopeptide (Phospho-left) and Non-Phosphopeptide (Phospho-right), using Tensin-2 (Phospho-Tyr483) Antibody

Nanjing BYabs science technology Co.,Ltd

网址: [www.njbybio.com](http://www.njbybio.com)

官方热线: 025-5229-8998

监督电话: 15950492658



Western blot analysis of lysate from K562 cells, using phospho-Thrensin-2 (Phospho-Tyr483) antibody .