



# Calgizzarin Polyclonal Antibody

<b>Catalog No</b>	BYab-03092
<b>Isotype</b>	IgG
<b>Reactivity</b>	Human;Mouse;Rat
<b>Applications</b>	IHC;IF;ELISA
<b>Gene Name</b>	S100A11
<b>Protein Name</b>	Protein S100-A11
<b>Immunogen</b>	Synthesized peptide derived from Calgizzarin . at AA range: 30-110
<b>Specificity</b>	Calgizzarin Polyclonal Antibody detects endogenous levels of Calgizzarin protein.
<b>Formulation</b>	Liquid in PBS containing 50% glycerol, 0.5% BSA and 0.02% sodium azide.
<b>Source</b>	Polyclonal, Rabbit,IgG
<b>Purification</b>	The antibody was affinity-purified from rabbit antiserum by affinity-chromatography using epitope-specific immunogen.
<b>Dilution</b>	IHC: 1/100 - 1/300. ELISA: 1/10000.. IF 1:50-200
<b>Concentration</b>	1 mg/ml
<b>Purity</b>	≥90%
<b>Storage Stability</b>	-20°C/1 year
<b>Synonyms</b>	S100A11; MLN70; S100C; Protein S100-A11; Calgizzarin; Metastatic lymph node gene 70 protein; MLN 70; Protein S100-C; S100 calcium-binding protein A11
<b>Observed Band</b>	
<b>Cell Pathway</b>	Cytoplasm . Nucleus .
<b>Tissue Specificity</b>	Brain,Epithelium,Keratinocyte,Lung,Mammary carcinoma,Placenta,Urina
<b>Function</b>	function:Facilitates the differentiation and the cornification of keratinocytes.,miscellaneous:Binds two calcium ions per molecule with an affinity similar to that of the S-100 proteins.,PTM:Phosphorylation at Thr-10 by PRKCA significantly suppresses homodimerization and promotes association with NCL/nucleolin which induces nuclear translocation.,similarity:Belongs to the S-100 family.,similarity:Contains 2 EF-hand domains.,subunit:Homodimer; disulfide-linked.,
<b>Background</b>	The protein encoded by this gene is a member of the S100 family of proteins containing 2 EF-hand calcium-binding motifs. S100 proteins are localized in the cytoplasm and/or nucleus of a wide range of cells, and involved in the regulation

**Nanjing BYabscience technology Co.,Ltd**



of a number of cellular processes such as cell cycle progression and differentiation. S100 genes include at least 13 members which are located as a cluster on chromosome 1q21. This protein may function in motility, invasion, and tubulin polymerization. Chromosomal rearrangements and altered expression of this gene have been implicated in tumor metastasis. [provided by RefSeq, Jul 2008],

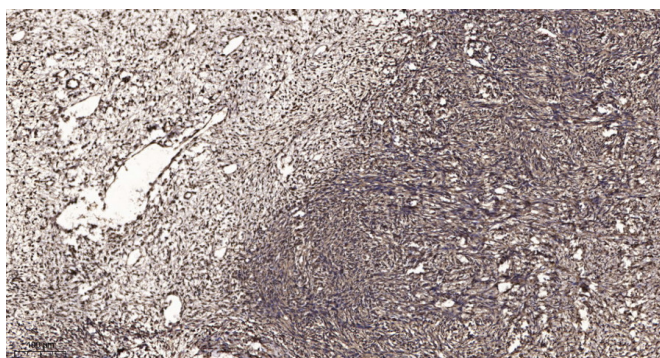
**matters needing attention**

Avoid repeated freezing and thawing!

**Usage suggestions**

This product can be used in immunological reaction related experiments. For more information, please consult technical personnel.

## Products Images



Immunohistochemical analysis of paraffin-embedded human oophoroma. 1, Antibody was diluted at 1:200(4° overnight). 2, Tris-EDTA,pH9.0 was used for antigen retrieval. 3,Secondary antibody was diluted at 1:200(room temperature, 45min).