



# Calponin 2 Polyclonal Antibody

<b>Catalog No</b>	BYab-03095
<b>Isotype</b>	IgG
<b>Reactivity</b>	Human;Mouse
<b>Applications</b>	WB;IF;ELISA
<b>Gene Name</b>	CNN2
<b>Protein Name</b>	Calponin-2
<b>Immunogen</b>	The antiserum was produced against synthesized peptide derived from human CNN2. AA range:121-170
<b>Specificity</b>	Calponin 2 Polyclonal Antibody detects endogenous levels of Calponin 2 protein.
<b>Formulation</b>	Liquid in PBS containing 50% glycerol, 0.5% BSA and 0.02% sodium azide.
<b>Source</b>	Polyclonal, Rabbit,IgG
<b>Purification</b>	The antibody was affinity-purified from rabbit antiserum by affinity-chromatography using epitope-specific immunogen.
<b>Dilution</b>	Western Blot: 1/500 - 1/2000. Immunofluorescence: 1/200 - 1/1000. ELISA: 1/40000. Not yet tested in other applications.
<b>Concentration</b>	1 mg/ml
<b>Purity</b>	≥90%
<b>Storage Stability</b>	-20°C/1 year
<b>Synonyms</b>	CNN2; Calponin-2; Calponin H2; smooth muscle; Neutral calponin
<b>Observed Band</b>	33kD
<b>Cell Pathway</b>	stress fiber,cytoskeleton,cell-cell junction,cell-cell adherens junction,focal adhesion,membrane,extracellular exosome,
<b>Tissue Specificity</b>	Heart and smooth muscle.
<b>Function</b>	function:Thin filament-associated protein that is implicated in the regulation and modulation of smooth muscle contraction. It is capable of binding to actin, calmodulin, troponin C and tropomyosin. The interaction of calponin with actin inhibits the actomyosin Mg-ATPase activity.,similarity:Belongs to the calponin family.,similarity:Contains 1 CH (calponin-homology) domain.,similarity:Contains 3 calponin-like repeats.,tissue specificity:Heart and smooth muscle.,
<b>Background</b>	The protein encoded by this gene, which can bind actin, calmodulin, troponin C, and tropomyosin, may function in the structural organization of actin filaments. The encoded protein could play a role in smooth muscle contraction and cell adhesion. Several pseudogenes of this gene have been identified, and are

**Nanjing BYabscience technology Co.,Ltd**



present on chromosomes 1, 2, 3, 6, 9, 11, 13, 15, 16, 21 and 22. Alternative splicing results in multiple transcript variants encoding different isoforms. [provided by RefSeq, Jan 2015],

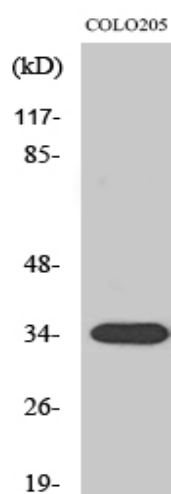
**matters needing attention**

Avoid repeated freezing and thawing!

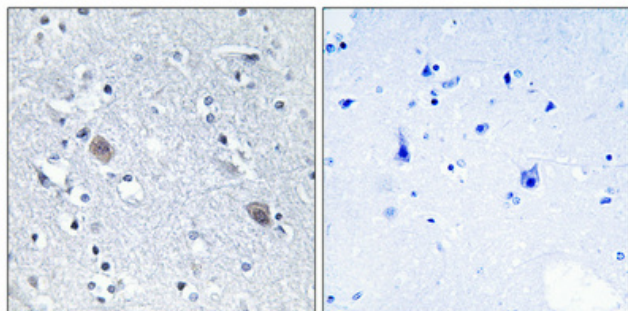
**Usage suggestions**

This product can be used in immunological reaction related experiments. For more information, please consult technical personnel.

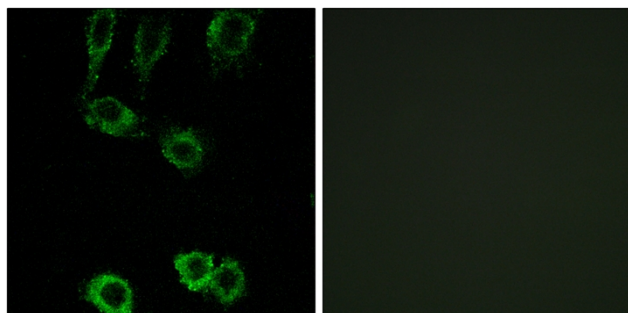
## Products Images



Western Blot analysis of various cells using Calponin 2 Polyclonal Antibody

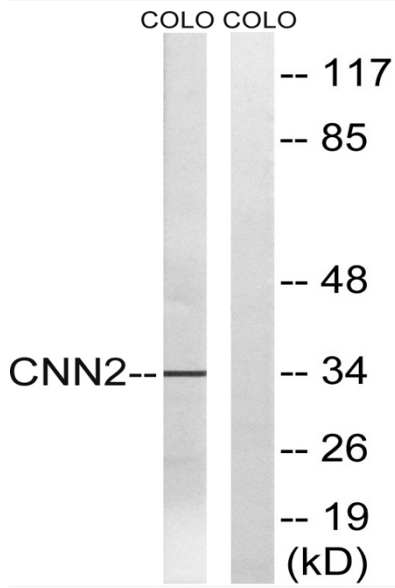


Immunohistochemical analysis of paraffin-embedded Human brain. Antibody was diluted at 1:100(4° overnight). High-pressure and temperature Tris-EDTA,pH8.0 was used for antigen retrieval. Negative control (right) obtained from antibody was pre-absorbed by immunogen peptide.



Immunofluorescence analysis of A549 cells, using CNN2 Antibody. The picture on the right is blocked with the synthesized peptide.

**Nanjing BYabscience technology Co.,Ltd**



Western blot analysis of lysates from COLO cells, using CNN2 Antibody. The lane on the right is blocked with the synthesized peptide.