



MAP-9 Polyclonal Antibody

Catalog No	BYab-03149
Isotype	IgG
Reactivity	Human;Rat;Mouse;
Applications	WB;ELISA
Gene Name	MAP9
Protein Name	Microtubule-associated protein 9
Immunogen	The antiserum was produced against synthesized peptide derived from human MAP9. AA range:121-170
Specificity	MAP-9 Polyclonal Antibody detects endogenous levels of MAP-9 protein.
Formulation	Liquid in PBS containing 50% glycerol, 0.5% BSA and 0.02% sodium azide.
Source	Polyclonal, Rabbit,IgG
Purification	The antibody was affinity-purified from rabbit antiserum by affinity-chromatography using epitope-specific immunogen.
Dilution	Western Blot: 1/500 - 1/2000. ELISA: 1/40000. Not yet tested in other applications.
Concentration	1 mg/ml
Purity	≥90%
Storage Stability	-20°C/1 year
Synonyms	MAP9; ASAP; Microtubule-associated protein 9; Aster-associated protein
Observed Band	75kD
Cell Pathway	Cytoplasm . Cytoplasm, cytoskeleton . Cytoplasm, cytoskeleton, spindle . Localizes to microtubules in interphase, associates with the mitotic spindle during mitosis, localizes to the central body during cytokinesis.
Tissue Specificity	Amygdala,Bone marrow,Brain,
Function	developmental stage:Constitutively expressed during the cell cycle.,function:Involved in organization of the bipolar mitotic spindle. Required for bipolar spindle assembly, mitosis progression and cytokinesis. May act by stabilizing interphase microtubules.,PTM:Phosphorylated upon DNA damage, probably by ATM or ATR.,subcellular location:Localizes to microtubules in interphase, associates with the mitotic spindle during mitosis, localizes to the central body during cytokinesis.,subunit:Binds to purified microtubules via its C-terminus.,

Nanjing BYabscience technology Co.,Ltd

网址: www.njbybio.com

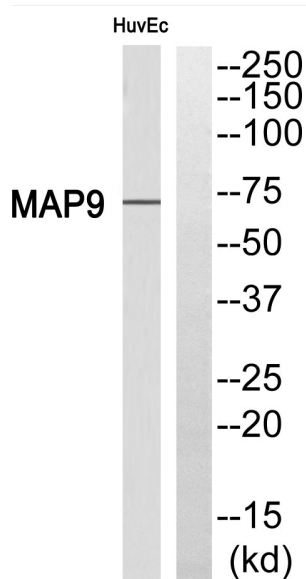
官方热线: 025-5229-8998

监督电话: 15950492658

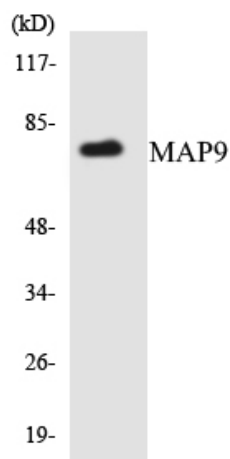


Background	ASAP is a microtubule-associated protein required for spindle function, mitotic progression, and cytokinesis (Saffin et al., 2005 [PubMed 16049101]).[supplied by OMIM, Mar 2008],
matters needing attention	Avoid repeated freezing and thawing!
Usage suggestions	This product can be used in immunological reaction related experiments. For more information, please consult technical personnel.

Products Images



Western blot analysis of MAP9 Antibody. The lane on the right is blocked with the MAP9 peptide.



Western blot analysis of the lysates from HUVEC cells using MAP9 antibody.

Nanjing BYabscience technology Co.,Ltd

网址: www.njbybio.com

官方热线: 025-5229-8998

监督电话: 15950492658