



S-100A16 Polyclonal Antibody

Catalog No	BYab-03179
Isotype	IgG
Reactivity	Human;Rat
Applications	WB;IHC;IF;ELISA
Gene Name	S100A16
Protein Name	Protein S100-A16
Immunogen	The antiserum was produced against synthesized peptide derived from human S100A16. AA range:19-68
Specificity	S-100A16 Polyclonal Antibody detects endogenous levels of S-100A16 protein.
Formulation	Liquid in PBS containing 50% glycerol, 0.5% BSA and 0.02% sodium azide.
Source	Polyclonal, Rabbit,IgG
Purification	The antibody was affinity-purified from rabbit antiserum by affinity-chromatography using epitope-specific immunogen.
Dilution	WB: 1/500 - 1/2000. IHC: 1/100 - 1/300. ELISA: 1/40000.. IF 1:50-200
Concentration	1 mg/ml
Purity	≥90%
Storage Stability	-20°C/1 year
Synonyms	S100A16; S100F; AAG13; Protein S100-A16; Aging-associated gene 13 protein; Protein S100-F; S100 calcium-binding protein A16
Observed Band	20kD
Cell Pathway	Nucleus, nucleolus . Cytoplasm . Primarily nucleolar. A high intracellular calcium level induces nucleolar exit and nucleocytoplasmic transport, whereas a low intracellular calcium level leads to nuclear translocation and accumulation within specific region of nucleoli (PubMed:17030513).
Tissue Specificity	Ubiquitous (PubMed:14684152). Highly expressed in esophagus, adipose tissues and colon. Expressed at lower level in lung, brain, pancreas and skeletal muscle. Expression is up-regulated in tumors of bladder, lung, thyroid gland, pancreas and ovary (PubMed:14684152). Expressed in astrocytes (PubMed:17030513).
Function	similarity:Belongs to the S-100 family.,similarity:Contains 2 EF-hand domains.,
Background	similarity:Belongs to the S-100 family.,similarity:Contains 2 EF-hand domains.,

Nanjing BYabscience technology Co.,Ltd



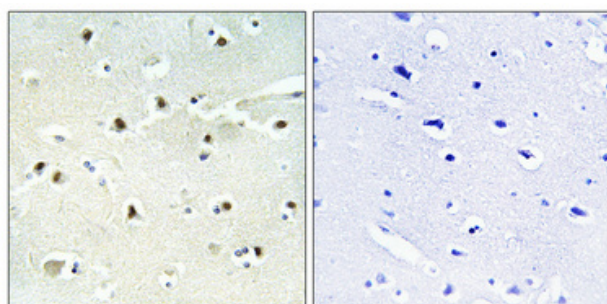
matters needing attention

Avoid repeated freezing and thawing!

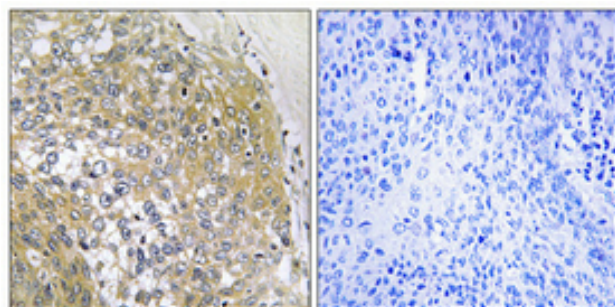
Usage suggestions

This product can be used in immunological reaction related experiments. For more information, please consult technical personnel.

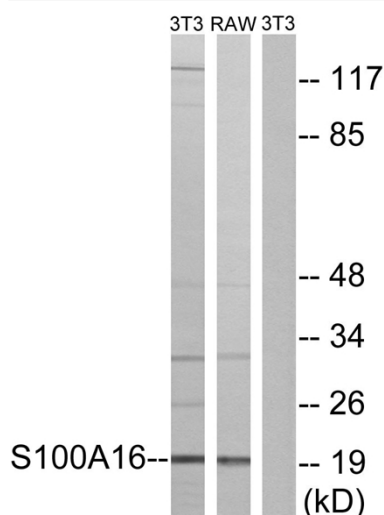
Products Images



Immunohistochemical analysis of paraffin-embedded Human brain. Antibody was diluted at 1:100(4° overnight). High-pressure and temperature Tris-EDTA,pH8.0 was used for antigen retrieval. Negative contrl (right) obtained from antibody was pre-absorbed by immunogen peptide.

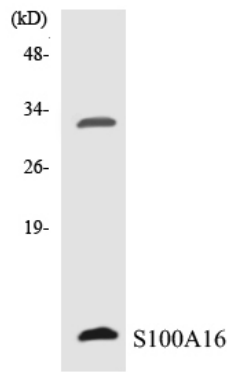


Immunohistochemical analysis of paraffin-embedded Human cervix cancer. Antibody was diluted at 1:100(4° overnight). High-pressure and temperature Tris-EDTA,pH8.0 was used for antigen retrieval. Negative contrl (right) obtained from antibody was pre-absorbed by immunogen peptide.



Western blot analysis of lysates from NIH/3T3 and RAW264.7 cells, using S100A16 Antibody. The lane on the right is blocked with the synthesized peptide.

Nanjing BYabscience technology Co.,Ltd



Western blot analysis of the lysates from RAW264.7 cells using S100A16 antibody.