



# S-100P Polyclonal Antibody

|                           |   |
|---------------------------|---|
| <b>Catalog No</b>         | BYab-03183  |
| <b>Isotype</b>            | IgG   |
| <b>Reactivity</b>         | Human;Rat;Mouse;  |
| <b>Applications</b>       | WB;IHC;IF;ELISA   |
| <b>Gene Name</b>          | S100P   |
| <b>Protein Name</b>       | Protein S100-P  |
| <b>Immunogen</b>          | The antiserum was produced against synthesized peptide derived from human S100P. AA range:26-75   |
| <b>Specificity</b>        | S-100P Polyclonal Antibody detects endogenous levels of S-100P protein.   |
| <b>Formulation</b>        | Liquid in PBS containing 50% glycerol, 0.5% BSA and 0.02% sodium azide.   |
| <b>Source</b>             | Polyclonal, Rabbit,IgG  |
| <b>Purification</b>       | The antibody was affinity-purified from rabbit antiserum by affinity-chromatography using epitope-specific immunogen.   |
| <b>Dilution</b>           | WB: 1/500 - 1/2000. IHC: 1/100 - 1/300. ELISA: 1/20000.. IF 1:50-200  |
| <b>Concentration</b>      | 1 mg/ml   |
| <b>Purity</b>             | ≥90%  |
| <b>Storage Stability</b>  | -20°C/1 year  |
| <b>Synonyms</b>           | S100P; S100E; Protein S100-P; Protein S100-E; S100 calcium-binding protein P  |
| <b>Observed Band</b>      | 10kD  |
| <b>Cell Pathway</b>       | Nucleus. Cytoplasm. Cell projection, microvillus membrane. Colocalizes with S100PBP in the nucleus. Colocalizes with EZR in the microvilli in a calcium-dependent manner.   |
| <b>Tissue Specificity</b> | Detected in all of the tissues except brain, testis and small intestine, expression level is higher in placenta, heart, lung, skeletal muscle, spleen and leukocyte. Up-regulated in various pancreatic ductal adenocarcinomas and pancreatic intraepithelial neoplasias.   |
| <b>Function</b>           | miscellaneous:This protein binds two calcium ions.,similarity:Belongs to the S-100 family.,similarity:Contains 2 EF-hand domains.,subcellular location:Colocalizes with S100PBP in the nucleus.,subunit:Homodimer. Interacts with S100PBP and S100Z.,tissue specificity:Up-regulated in various pancreatic ductal adenocarcinomas and pancreatic intraepithelial neoplasias., |
| <b>Background</b>         | The protein encoded by this gene is a member of the S100 family of proteins containing 2 EF-hand calcium-binding motifs. S100 proteins are localized in the   |

**Nanjing BYabscience technology Co.,Ltd**



cytoplasm and/or nucleus of a wide range of cells, and involved in the regulation of a number of cellular processes such as cell cycle progression and differentiation. S100 genes include at least 13 members which are located as a cluster on chromosome 1q21; however, this gene is located at 4p16. This protein, in addition to binding  $Ca^{2+}$ , also binds  $Zn^{2+}$  and  $Mg^{2+}$ . This protein may play a role in the etiology of prostate cancer. [provided by RefSeq, Jul 2008],

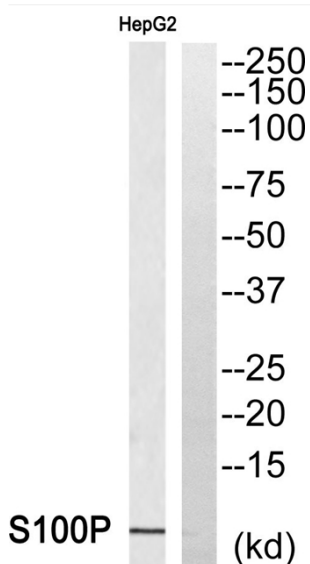
**matters needing attention**

Avoid repeated freezing and thawing!

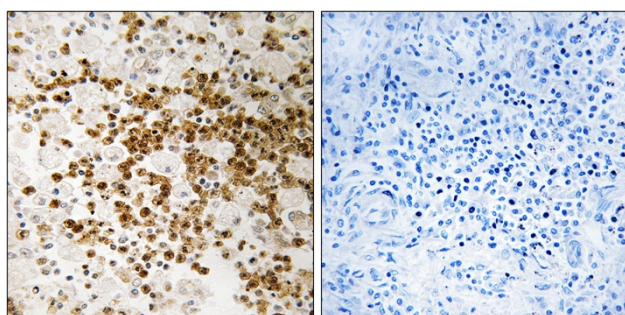
**Usage suggestions**

This product can be used in immunological reaction related experiments. For more information, please consult technical personnel.

## Products Images



Western blot analysis of S100P Antibody. The lane on the right is blocked with the S100P peptide.



Immunohistochemistry analysis of paraffin-embedded human lung carcinoma, using S100P Antibody. The lane on the right is blocked with the S100P peptide.