



# Calbindin D28K Polyclonal Antibody

<b>Catalog No</b>	BYab-03226
<b>Isotype</b>	IgG
<b>Reactivity</b>	Human;Mouse;Rat
<b>Applications</b>	WB;IHC;IF;ELISA
<b>Gene Name</b>	CALB1
<b>Protein Name</b>	Calbindin
<b>Immunogen</b>	The antiserum was produced against synthesized peptide derived from the C-terminal region of human CALB1. AA range:191-240
<b>Specificity</b>	Calbindin D28K Polyclonal Antibody detects endogenous levels of Calbindin D28K protein.
<b>Formulation</b>	Liquid in PBS containing 50% glycerol, 0.5% BSA and 0.02% sodium azide.
<b>Source</b>	Polyclonal, Rabbit,IgG
<b>Purification</b>	The antibody was affinity-purified from rabbit antiserum by affinity-chromatography using epitope-specific immunogen.
<b>Dilution</b>	WB: 1/500 - 1/2000. IHC-p: 1:100-300 ELISA: 1/20000.. IF 1:50-200
<b>Concentration</b>	1 mg/ml
<b>Purity</b>	≥90%
<b>Storage Stability</b>	-20°C/1 year
<b>Synonyms</b>	CALB1; CAB27; Calbindin; Calbindin D28; D-28K; Vitamin D-dependent calcium-binding protein, avian-type
<b>Observed Band</b>	30kD
<b>Cell Pathway</b>	nucleus,cytosol,axon,dendrite,neuronal cell body,terminal bouton,synapse,extracellular exosome,
<b>Tissue Specificity</b>	Brain,Cerebellum,Kidney,Lung,Substantia nigra,
<b>Function</b>	domain:This protein has four functional calcium-binding sites; potential sites II and VI have lost affinity for calcium.,function:Buffers cytosolic calcium. May stimulate a membrane Ca(2+)-ATPase and a 3',5'-cyclic nucleotide phosphodiesterase.,online information:Calbindin entry,similarity:Belongs to the calbindin family.,similarity:Contains 5 EF-hand domains.,subunit:Interacts with RANBP9.,
<b>Background</b>	The protein encoded by this gene is a member of the calcium-binding protein superfamily that includes calmodulin and troponin C. Originally described as a 27 kDa protein, it is now known to be a 28 kDa protein. It contains four active

**Nanjing BYabscience technology Co.,Ltd**



calcium-binding domains, and has two modified domains that are thought to have lost their calcium binding capability. This protein is thought to buffer entry of calcium upon stimulation of glutamate receptors. Depletion of this protein was noted in patients with Huntington disease. [provided by RefSeq, Jan 2015],

**matters needing attention**

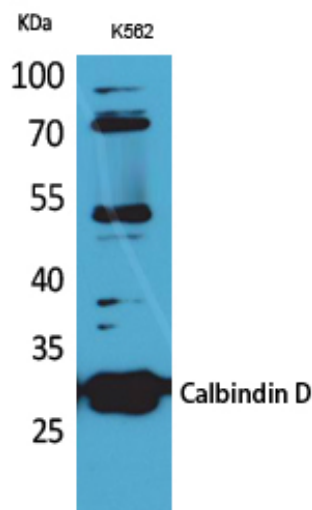
Avoid repeated freezing and thawing!

**Usage suggestions**

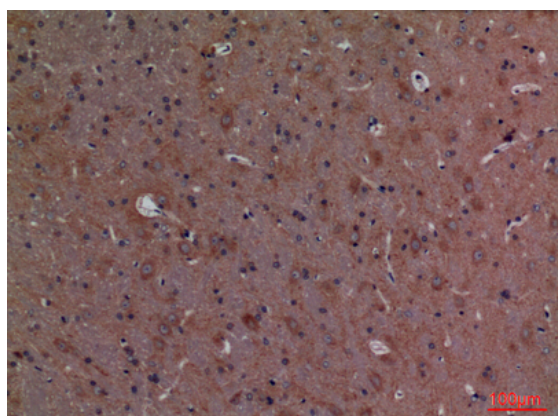
This product can be used in immunological reaction related experiments. For more information, please consult technical personnel.



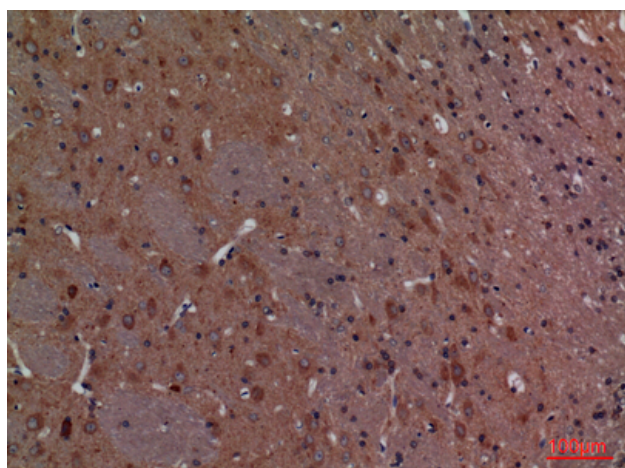
## Products Images



Western Blot analysis of K562 cells using Calbindin D28K Polyclonal Antibody. Antibody was diluted at 1:1000. Secondary antibody(catalog#:RS0002) was diluted at 1:20000



Immunohistochemical analysis of paraffin-embedded rat-brain, antibody was diluted at 1:100



Immunohistochemical analysis of paraffin-embedded rat-brain, antibody was diluted at 1:100