



Tubulin γ Polyclonal Antibody

Catalog No	BYab-03240
Isotype	IgG
Reactivity	Human;Mouse;Rat
Applications	IHC;IF;ELISA
Gene Name	TUBG1 TUBG
Protein Name	Tubulin gamma-1 chain (Gamma-1-tubulin) (Gamma-tubulin complex component 1) (GCP-1)
Immunogen	Synthetic peptide from human protein at AA range: 380-440
Specificity	The antibody detects endogenous Tubulin γ
Formulation	Liquid in PBS containing 50% glycerol, 0.5% BSA and 0.02% sodium azide.
Source	Polyclonal, Rabbit,IgG
Purification	The antibody was affinity-purified from rabbit antiserum by affinity-chromatography using epitope-specific immunogen.
Dilution	IHC-p 1:50-200, ELISA 1:10000-20000. IF 1:50-200
Concentration	1 mg/ml
Purity	$\geq 90\%$
Storage Stability	-20°C/1 year
Synonyms	Tubulin gamma-1 chain (Gamma-1-tubulin;Gamma-tubulin complex component 1;GCP-1)
Observed Band	
Cell Pathway	Cytoplasm, cytoskeleton, microtubule organizing center, centrosome . Cytoplasm, cytoskeleton, spindle . Localizes to mitotic spindle microtubules. .
Tissue Specificity	Mammary cancer,Skin,
Function	function:Tubulin is the major constituent of microtubules. Gamma tubulin is found at microtubule organizing centers (MTOC) such as the spindle poles or the centrosome, suggesting that it is involved in the minus-end nucleation of microtubule assembly.,mass spectrometry: PubMed:11840567,similarity:Belongs to the tubulin family.,subunit:Interacts with GCP2 and GCP3. Interacts with B9D2.,
Background	This gene encodes a member of the tubulin superfamily. The encoded protein localizes to the centrosome where it binds to microtubules as part of a complex referred to as the gamma-tubulin ring complex. The protein mediates microtubule nucleation and is required for microtubule formation and progression of the cell cycle. A pseudogene of this gene is found on chromosome 7. [provided by

Nanjing BYabs science technology Co.,Ltd



RefSeq, Jan 2009],

**matters needing
attention**

Avoid repeated freezing and thawing!

Usage suggestions

This product can be used in immunological reaction related experiments. For more information, please consult technical personnel.

Nanjing BYabscience technology Co.,Ltd

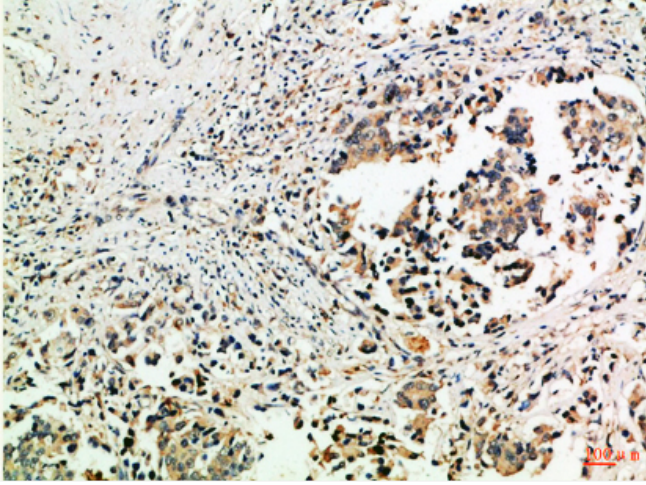
网址: www.njbybio.com

官方热线: 025-5229-8998

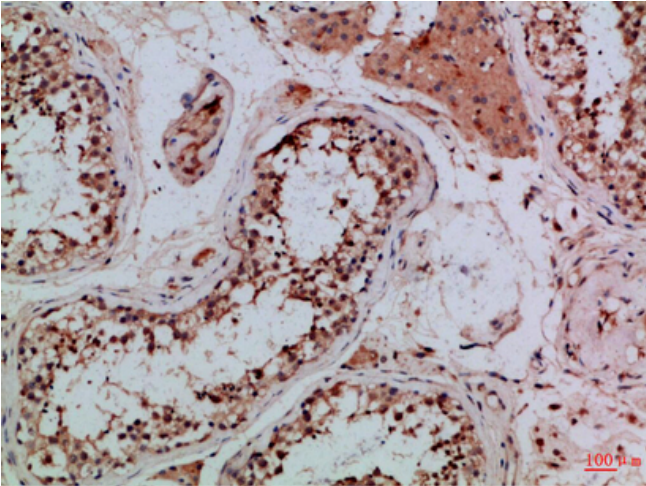
监督电话: 15950492658



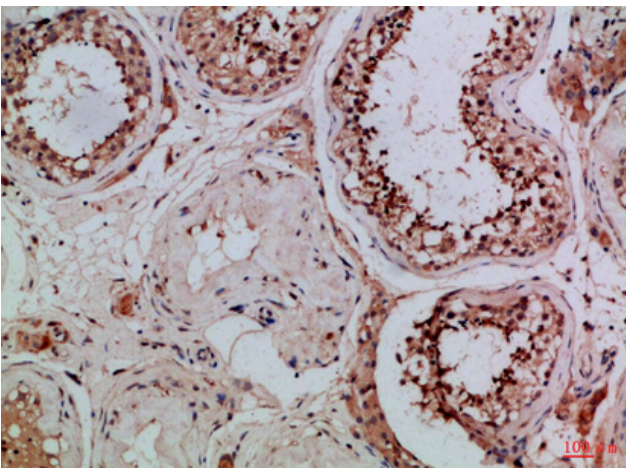
Products Images



Immunohistochemical analysis of paraffin-embedded Human-breast-cancer, antibody was diluted at 1:100



Immunohistochemical analysis of paraffin-embedded Human-testis, antibody was diluted at 1:100



Immunohistochemical analysis of paraffin-embedded Human-testis, antibody was diluted at 1:100