



# PRC Polyclonal Antibody

<b>Catalog No</b>	BYab-03327
<b>Isotype</b>	IgG
<b>Reactivity</b>	Human;Mouse
<b>Applications</b>	IHC;IF;ELISA
<b>Gene Name</b>	PPRC1
<b>Protein Name</b>	Peroxisome proliferator-activated receptor gamma coactivator-related protein 1
<b>Immunogen</b>	The antiserum was produced against synthesized peptide derived from human PPRC1. AA range:1609-1658
<b>Specificity</b>	PRC Polyclonal Antibody detects endogenous levels of PRC protein.
<b>Formulation</b>	Liquid in PBS containing 50% glycerol, 0.5% BSA and 0.02% sodium azide.
<b>Source</b>	Polyclonal, Rabbit,IgG
<b>Purification</b>	The antibody was affinity-purified from rabbit antiserum by affinity-chromatography using epitope-specific immunogen.
<b>Dilution</b>	IHC: 1/100 - 1/300. ELISA: 1/40000.. IF 1:50-200
<b>Concentration</b>	1 mg/ml
<b>Purity</b>	≥90%
<b>Storage Stability</b>	-20°C/1 year
<b>Synonyms</b>	PPRC1; KIAA0595; Peroxisome proliferator-activated receptor gamma coactivator-related protein 1; PGC-1-related coactivator; PRC
<b>Observed Band</b>	
<b>Cell Pathway</b>	Nucleus . Colocalizes with NRF1. .
<b>Tissue Specificity</b>	Strongly expressed in heart and skeletal muscle, moderately in lung, placenta, intestine, liver, kidney, spleen, thymus, colon and brain. Also expressed in several oncocytic thyroid tumors.
<b>Function</b>	function:Acts as a coactivator during transcriptional activation of nuclear genes related to mitochondrial biogenesis and cell growth. Involved in the transcription coactivation of CREB and NRF1 target genes.,induction:Up-regulated by serum (at protein level).,similarity:Contains 1 RRM (RNA recognition motif) domain.,subcellular location:Colocalizes with NRF1.,subunit:Interacts with CREB1 and NRF1.,tissue specificity:Strongly expressed in heart and skeletal muscle, moderately in lung, placenta, intestine, liver, kidney, spleen, thymus, colon and brain. Also expressed in several oncocytic thyroid tumors.,

Nanjing BYabscience technology Co.,Ltd



**Background**

The protein encoded by this gene is similar to PPAR-gamma coactivator 1 (PPARGC1/PGC-1), a protein that can activate mitochondrial biogenesis in part through a direct interaction with nuclear respiratory factor 1 (NRF1). This protein has been shown to interact with NRF1. It is thought to be a functional relative of PPAR-gamma coactivator 1 that activates mitochondrial biogenesis through NRF1 in response to proliferative signals. Alternative splicing results in multiple transcript variants. [provided by RefSeq, Dec 2013],

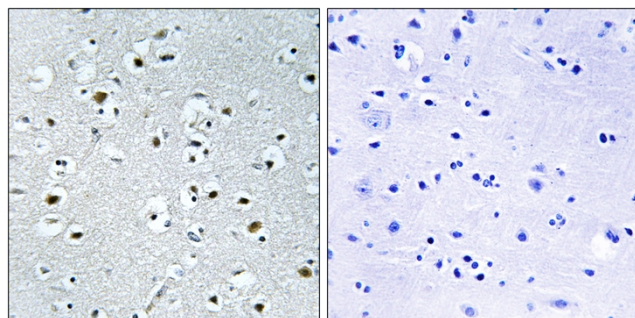
**matters needing attention**

Avoid repeated freezing and thawing!

**Usage suggestions**

This product can be used in immunological reaction related experiments. For more information, please consult technical personnel.

**Products Images**



Immunohistochemistry analysis of paraffin-embedded human brain tissue, using PPRC1 Antibody. The picture on the right is blocked with the synthesized peptide.