



IPP-2 (phospho Ser120/S121) Polyclonal Antibody

Catalog No	BYab-03599
Isotype	IgG
Reactivity	Human;Mouse;Rat
Applications	IHC;IF;ELISA
Gene Name	PPP1R2
Protein Name	Protein phosphatase inhibitor 2
Immunogen	The antiserum was produced against synthesized peptide derived from human PPP1R2 around the phosphorylation site of Ser120 and Ser121. AA range:86-135
Specificity	Phospho-IPP-2 (S120/S121) Polyclonal Antibody detects endogenous levels of IPP-2 protein only when phosphorylated at S120/S121.
Formulation	Liquid in PBS containing 50% glycerol, 0.5% BSA and 0.02% sodium azide.
Source	Polyclonal, Rabbit,IgG
Purification	The antibody was affinity-purified from rabbit antiserum by affinity-chromatography using epitope-specific immunogen.
Dilution	IHC: 1/100 - 1/300. ELISA: 1/5000.. IF 1:50-200
Concentration	1 mg/ml
Purity	≥90%
Storage Stability	-20°C/1 year
Synonyms	PPP1R2; IPP2; Protein phosphatase inhibitor 2; IPP-2
Observed Band	
Cell Pathway	protein phosphatase type 1 complex,
Tissue Specificity	Epithelium,Heart,Platelet,Skin,Testis,
Function	function:Inhibitor of protein-phosphatase 1.,PTM:Phosphorylation on Thr-73 by GSK3 activates PP1 by dissociating the PP1-PPP1R2 complex (By similarity). Phosphorylation on Ser-44 by ATM activates PP1 by dissociating the PP1-PPP1R2 complex.,similarity:Belongs to the protein phosphatase inhibitor 2 family.,subunit:Heterodimer with PP1.,
Background	Protein phosphatase-1 (PP1) is one of the main eukaryotic serine/threonine phosphatases. The protein encoded by this gene binds to the catalytic subunit of PP1, strongly inhibiting its activity. Ten related pseudogenes have been found throughout the human genome. Several splice variants encoding different isoforms have been found for this gene. [provided by RefSeq, Oct 2015],
matters needing attention	Avoid repeated freezing and thawing!

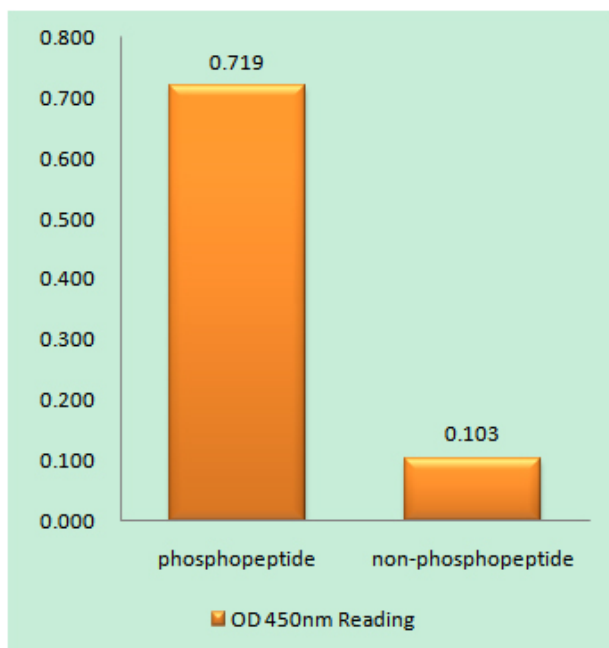
Nanjing BYabscience technology Co.,Ltd



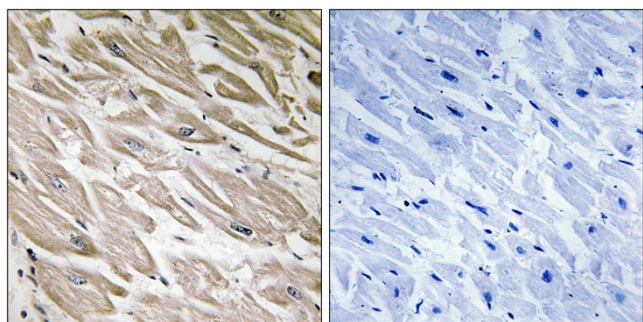
Usage suggestions

This product can be used in immunological reaction related experiments. For more information, please consult technical personnel.

Products Images



Enzyme-Linked Immunosorbent Assay (Phospho-ELISA) for Immunogen Phosphopeptide (Phospho-left) and Non-Phosphopeptide (Phospho-right), using PPP1R2 (Phospho-Ser120+Ser121) Antibody



Immunohistochemistry analysis of paraffin-embedded human heart, using PPP1R2 (Phospho-Ser120+Ser121) Antibody. The picture on the right is blocked with the phospho peptide.

Nanjing BYabscience technology Co.,Ltd

网址: www.njbybio.com

官方热线: 025-5229-8998

监督电话: 15950492658