



# Syndecan-4 (phospho Ser179) Polyclonal Antibody

<b>Catalog No</b>	BYab-03612
<b>Isotype</b>	IgG
<b>Reactivity</b>	Human;Mouse;Rat
<b>Applications</b>	IHC;IF;ELISA
<b>Gene Name</b>	SDC4
<b>Protein Name</b>	Syndecan-4
<b>Immunogen</b>	The antiserum was produced against synthesized peptide derived from human Syndecan4 around the phosphorylation site of Ser179. AA range:145-194
<b>Specificity</b>	Phospho-Syndecan-4 (S179) Polyclonal Antibody detects endogenous levels of Syndecan-4 protein only when phosphorylated at S179.
<b>Formulation</b>	Liquid in PBS containing 50% glycerol, 0.5% BSA and 0.02% sodium azide.
<b>Source</b>	Polyclonal, Rabbit,IgG
<b>Purification</b>	The antibody was affinity-purified from rabbit antiserum by affinity-chromatography using epitope-specific immunogen.
<b>Dilution</b>	WB 1:500-2000 ,Immunohistochemistry: 1/100 - 1/300. Immunofluorescence: 1/200 - 1/1000. ELISA: 1/20000. Not yet tested in other applications.
<b>Concentration</b>	1 mg/ml
<b>Purity</b>	≥90%
<b>Storage Stability</b>	-20°C/1 year
<b>Synonyms</b>	SDC4; Syndecan-4; SYND4; Amphiglycan; Ryudocan core protein
<b>Observed Band</b>	
<b>Cell Pathway</b>	[Isoform 1]: Membrane ; Single-pass type I membrane protein . Secreted . Shedding of the ectodomain produces a soluble form. .; [Isoform 2]: Secreted.
<b>Tissue Specificity</b>	Expressed in epithelial and fibroblastic cells.
<b>Function</b>	function:Cell surface proteoglycan that bears heparan sulfate.,function:Cell surface proteoglycan.,similarity:Belongs to the syndecan proteoglycan family.,subunit:Homodimer. Interacts with CDCP1, with GIPC PDZ domain and with NUDT16L1/SDOS (By similarity). Interacts with SDCBP.,tissue specificity:Expressed in epithelial and fibroblastic cells.,
<b>Background</b>	The protein encoded by this gene is a transmembrane (type I) heparan sulfate proteoglycan that functions as a receptor in intracellular signaling. The encoded protein is found as a homodimer and is a member of the syndecan proteoglycan family. This gene is found on chromosome 20, while a pseudogene has been found on chromosome 22. [provided by RefSeq, Jul 2008],

**Nanjing BYabs science technology Co.,Ltd**



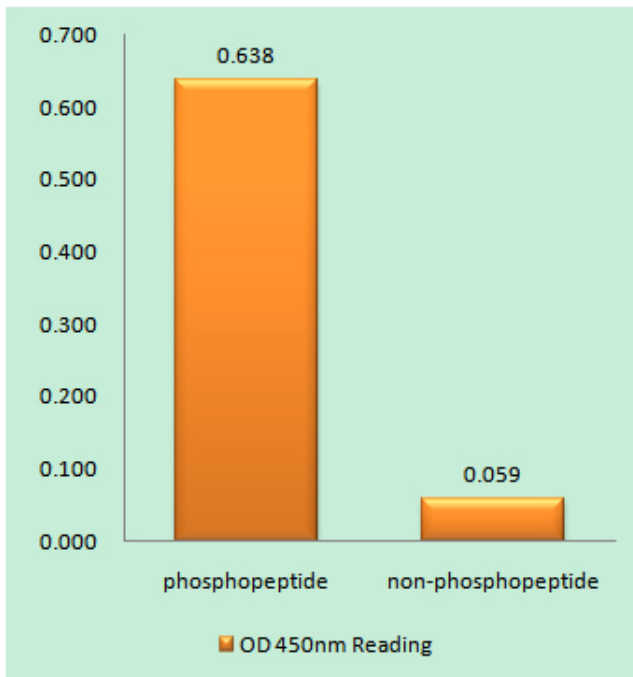
**matters needing attention**

Avoid repeated freezing and thawing!

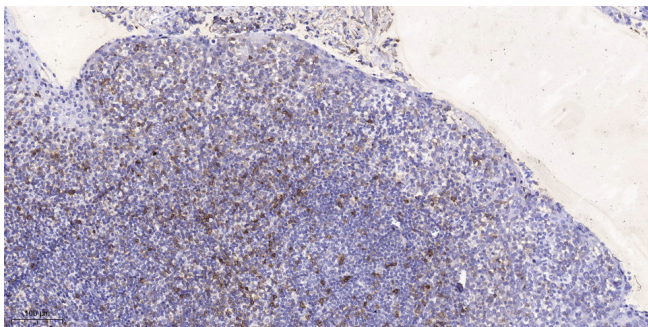
**Usage suggestions**

This product can be used in immunological reaction related experiments. For more information, please consult technical personnel.

## Products Images



Enzyme-Linked Immunosorbent Assay (Phospho-ELISA) for Immunogen Phosphopeptide (Phospho-left) and Non-Phosphopeptide (Phospho-right), using Syndecan4 (Phospho-Ser179) Antibody



Immunohistochemical analysis of paraffin-embedded human tonsil. 1, Antibody was diluted at 1:200(4° overnight). 2, Tris-EDTA,pH9.0 was used for antigen retrieval. 3,Secondary antibody was diluted at 1:200(room temperature, 45min).

**Nanjing BYabscience technology Co.,Ltd**

网址: [www.njbybio.com](http://www.njbybio.com)

官方热线: 025-5229-8998

监督电话: 15950492658