



A Cyclase IX Polyclonal Antibody

Catalog No	BYab-03673
Isotype	IgG
Reactivity	Human;Rat;Mouse;
Applications	WB;IHC;IF;ELISA
Gene Name	ADCY9
Protein Name	Adenylate cyclase type 9
Immunogen	The antiserum was produced against synthesized peptide derived from human ADCY9. AA range:137-186
Specificity	A Cyclase IX Polyclonal Antibody detects endogenous levels of A Cyclase IX protein.
Formulation	Liquid in PBS containing 50% glycerol, 0.5% BSA and 0.02% sodium azide.
Source	Polyclonal, Rabbit,IgG
Purification	The antibody was affinity-purified from rabbit antiserum by affinity-chromatography using epitope-specific immunogen.
Dilution	WB: 1/500 - 1/2000. IHC: 1/100 - 1/300. ELISA: 1/10000.. IF 1:50-200
Concentration	1 mg/ml
Purity	≥90%
Storage Stability	-20°C/1 year
Synonyms	ADCY9; KIAA0520; Adenylate cyclase type 9; ATP pyrophosphate-lyase 9; Adenylate cyclase type IX; Adenylyl cyclase 9
Observed Band	150kD
Cell Pathway	Cell membrane ; Multi-pass membrane protein .
Tissue Specificity	Detected in skeletal muscle, pancreas, lung, heart, kidney, liver, brain and placenta (PubMed:9628827, PubMed:10987815). Expressed in multiple cells of the lung, with expression highest in airway smooth muscle (PubMed:12972952).
Function	catalytic activity:ATP = 3',5'-cyclic AMP + diphosphate.,cofactor:Binds 2 magnesium ions per subunit.,enzyme regulation:Insensitive to calcium/calmodulin, forskolin and somatostatin. Stimulated by beta-adrenergic receptor activation.,function:May play a fundamental role in situations where fine interplay between intracellular calcium and cAMP determines the cellular function. May be a physiologically relevant docking site for calcineurin.,similarity:Belongs to the adenylyl cyclase class-4/guanylyl cyclase family.,similarity:Contains 2 guanylate cyclase domains.,tissue specificity:Expressed in multiple cells of the lung, with expression highest in airway smooth muscle.,

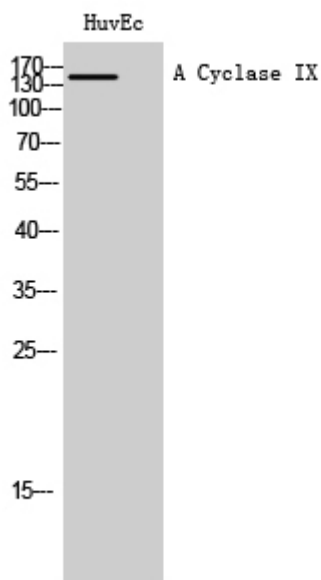
Nanjing BYabscience technology Co.,Ltd



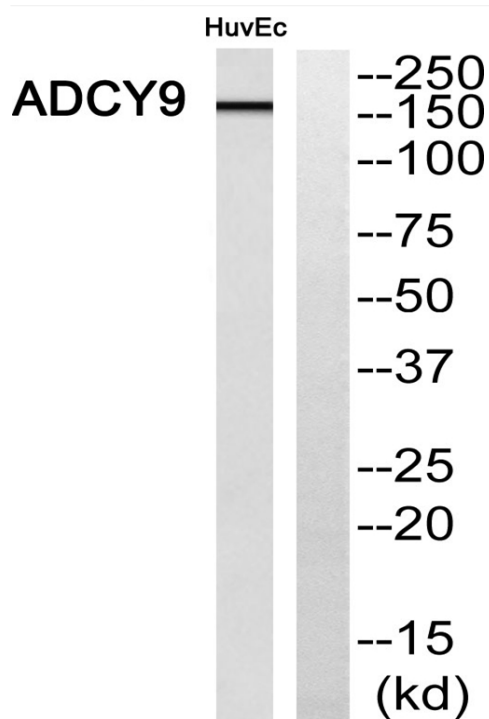
Background	Adenylate cyclase is a membrane bound enzyme that catalyses the formation of cyclic AMP from ATP. It is regulated by a family of G protein-coupled receptors, protein kinases, and calcium. The type 9 adenylyl cyclase is a widely distributed adenylyl cyclase, and it is stimulated by beta-adrenergic receptor activation but is insensitive to forskolin, calcium, and somatostatin. [provided by RefSeq, Jul 2008],
matters needing attention	Avoid repeated freezing and thawing!
Usage suggestions	This product can be used in immunological reaction related experiments. For more information, please consult technical personnel.



Products Images



Western Blot analysis of HuvEc cells using A Cyclase IX Polyclonal Antibody diluted at 1:1000



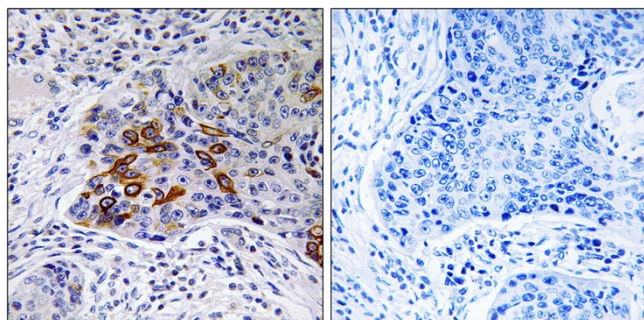
Western blot analysis of ADCY9 Antibody. The lane on the right is blocked with the ADCY9 peptide.

Nanjing BYabs science technology Co.,Ltd

网址: www.njbybio.com

官方热线: 025-5229-8998

监督电话: 15950492658



Immunohistochemistry analysis of paraffin-embedded human lung carcinoma, using ADCY9 Antibody. The lane on the right is blocked with the ADCY9 peptide.