



ANKRD30A Polyclonal Antibody

Catalog No	BYab-03700
Isotype	IgG
Reactivity	Human;Rat;Mouse;
Applications	WB;IHC;IF;ELISA
Gene Name	ANKRD30A
Protein Name	Ankyrin repeat domain-containing protein 30A
Immunogen	The antiserum was produced against synthesized peptide derived from human AN30A. AA range:1041-1090
Specificity	ANKRD30A Polyclonal Antibody detects endogenous levels of ANKRD30A protein.
Formulation	Liquid in PBS containing 50% glycerol, 0.5% BSA and 0.02% sodium azide.
Source	Polyclonal, Rabbit,IgG
Purification	The antibody was affinity-purified from rabbit antiserum by affinity-chromatography using epitope-specific immunogen.
Dilution	WB: 1/500 - 1/2000. IHC: 1/100 - 1/300. ELISA: 1/5000.. IF 1:50-200
Concentration	1 mg/ml
Purity	≥90%
Storage Stability	-20°C/1 year
Synonyms	ANKRD30A; Ankyrin repeat domain-containing protein 30A; Serologically defined breast cancer antigen NY-BR-1
Observed Band	153kD
Cell Pathway	nucleus,
Tissue Specificity	Mainly expressed in breast and testis. A very faint signal is detected in placenta. Also expressed in many breast cancer cells.
Function	similarity:Contains 6 ANK repeats.,tissue specificity:Mainly expressed in breast and testis. A very faint signal is detected in placenta. Also expressed in many breast cancer cells.,
Background	similarity:Contains 6 ANK repeats.,tissue specificity:Mainly expressed in breast and testis. A very faint signal is detected in placenta. Also expressed in many breast cancer cells.,
matters needing attention	Avoid repeated freezing and thawing!

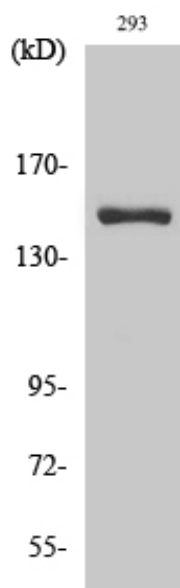
Nanjing BYabscience technology Co.,Ltd



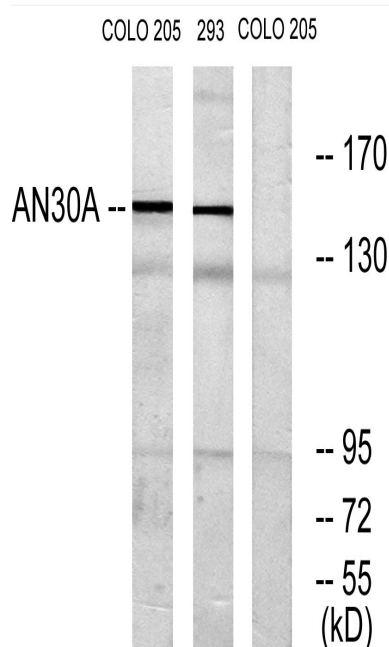
Usage suggestions

This product can be used in immunological reaction related experiments. For more information, please consult technical personnel.

Products Images



Western Blot analysis of various cells using ANKRD30A Polyclonal Antibody diluted at 1:2000 cells nucleus extracted by Minute TM Cytoplasmic and Nuclear Fractionation kit (SC-003, Invent biotech, MN, USA).



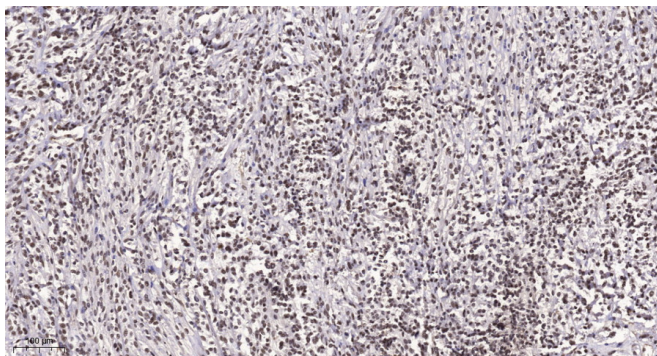
Western blot analysis of lysates from 293 and COLO cells, using AN30A Antibody. The lane on the right is blocked with the synthesized peptide.

Nanjing BYabs science technology Co.,Ltd

网址: www.njbybio.com

官方热线: 025-5229-8998

监督电话: 15950492658



Immunohistochemical analysis of paraffin-embedded human Small intestinal stromal tumor. 1, Tris-EDTA,pH9.0 was used for antigen retrieval. 2 Antibody was diluted at 1:200(4° overnight.3,Secondary antibody was diluted at 1:200(room temperature, 45min).