



ARRDC3 Polyclonal Antibody

Catalog No	BYab-03720
Isotype	IgG
Reactivity	Human;Mouse;Rat
Applications	WB;IHC;IF;ELISA
Gene Name	ARRDC3
Protein Name	Arrestin domain-containing protein 3
Immunogen	The antiserum was produced against synthesized peptide derived from human ARRDC3. AA range:365-414
Specificity	ARRDC3 Polyclonal Antibody detects endogenous levels of ARRDC3 protein.
Formulation	Liquid in PBS containing 50% glycerol, 0.5% BSA and 0.02% sodium azide.
Source	Polyclonal, Rabbit,IgG
Purification	The antibody was affinity-purified from rabbit antiserum by affinity-chromatography using epitope-specific immunogen.
Dilution	WB: 1/500 - 1/2000. IHC: 1/100 - 1/300. ELISA: 1/20000.. IF 1:50-200
Concentration	1 mg/ml
Purity	≥90%
Storage Stability	-20°C/1 year
Synonyms	ARRDC3; KIAA1376; Arrestin domain-containing protein 3; TBP-2-like inducible membrane protein; TLIMP
Observed Band	46kD
Cell Pathway	Cytoplasm . Cell membrane ; Peripheral membrane protein ; Cytoplasmic side . Lysosome . Endosome . Early endosome . Associated with plasma membrane, as well as with endosomes and lysosomes during endocytosis (PubMed:16269462, PubMed:23208550, PubMed:20559325). .
Tissue Specificity	Highly expressed in skeletal muscle, placenta, kidney, lung, liver, blood, adrenal gland, lymph node, mammary gland, thyroid, and trachea (PubMed:16269462, PubMed:21982743). Very low levels in colon, thymus, spleen, small intestine, bladder and bone marrow (PubMed:16269462). Strong expression in differentiated adipocytes compared to preadipocytes (PubMed:16269462). Detected in omental fat and subcutaneous fat tissue (PubMed:21982743).
Function	induction:By troglitazone and pioglitazone (selective PPARG agonists), by prostaglandin J2 (PGJ2) and by L165,041 (a PPARG ligand), by vitamin D3 and, to a lesser extent, by PMA (phorbol myristate acetate) in the promyelocytic leukemia HL-60 cells. No induction by retinoic acid, nor by clofibrate (a specific

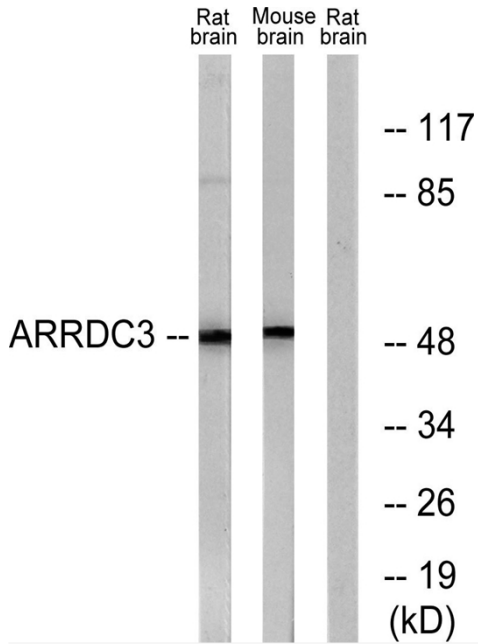
Nanjing BYabscience technology Co.,Ltd



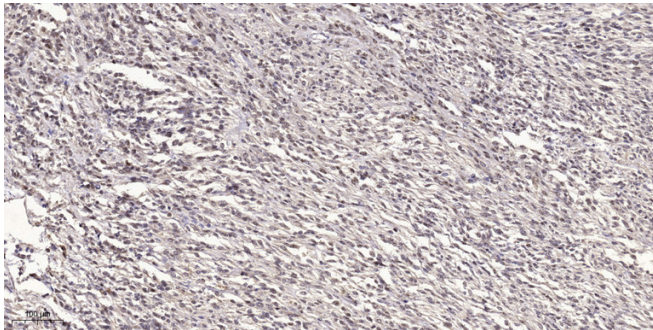
	PPARA agonist).,similarity:Belongs to the arrestin family.,subcellular location:Associated with plasma membrane, as well as with endosomes and lysosomes during endocytosis.,subunit:Does not bind TXN (thioredoxin).,tissue specificity:Highly expressed in skeletal muscle, placenta, kidney, adrenal gland, lymph node, mammary gland, thyroid, and trachea. Very low levels in colon, thymus, spleen, small intestine, bladder and bone marrow. Strong expression in differentiated adipocytes compared to preadipocytes.,
Background	This gene encodes a member of the arrestin family of proteins, which regulate G protein-mediated signaling. The encoded protein is thought to act as a regulator of breast cancer growth and progression by binding to a phosphorylated form of integrin beta4, a tumor-related antigen, targeting the integrin for internalization and degradation. [provided by RefSeq, Jul 2016],
matters needing attention	Avoid repeated freezing and thawing!
Usage suggestions	This product can be used in immunological reaction related experiments. For more information, please consult technical personnel.



Products Images



Western blot analysis of lysates from rat brain and mouse brain cells, using ARRDC3 Antibody. The lane on the right is blocked with the synthesized peptide.



Immunohistochemical analysis of paraffin-embedded human small intestinal carcinoma tissue. 1, primary Antibody was diluted at 1:200 (4° overnight). 2, Sodium citrate pH 6.0 was used for antigen retrieval (>98° C, 20min). 3, Secondary antibody was diluted at 1:200