



Ataxin-2L Polyclonal Antibody

Catalog No	BYab-03734
Isotype	IgG
Reactivity	Human;Rat;Mouse;
Applications	WB;ELISA
Gene Name	ATXN2L
Protein Name	Ataxin-2-like protein
Immunogen	The antiserum was produced against synthesized peptide derived from human ATXN2L. AA range:571-620
Specificity	Ataxin-2L Polyclonal Antibody detects endogenous levels of Ataxin-2L protein.
Formulation	Liquid in PBS containing 50% glycerol, 0.5% BSA and 0.02% sodium azide.
Source	Polyclonal, Rabbit,IgG
Purification	The antibody was affinity-purified from rabbit antiserum by affinity-chromatography using epitope-specific immunogen.
Dilution	Western Blot: 1/500 - 1/2000. ELISA: 1/20000. Not yet tested in other applications.
Concentration	1 mg/ml
Purity	≥90%
Storage Stability	-20°C/1 year
Synonyms	ATXN2L; A2D; A2LG; A2LP; A2RP; Ataxin-2-like protein; Ataxin-2 domain protein; Ataxin-2-related protein
Observed Band	113kD
Cell Pathway	Membrane ; Peripheral membrane protein . Cytoplasm . Nucleus speckle . Cytoplasmic granule . Predominantly cytoplasmic but is also detected in nuclear speckles (PubMed:23209657). Component of cytoplasmic stress granules (PubMed:23209657). Inhibition of methylation alters nuclear localization (PubMed:25748791). Methylation does not seem to be required for localization to stress granules under stress conditions (PubMed:25748791). .
Tissue Specificity	Expressed at high levels in thymus, lymph node, spleen, fetal kidney and adult testis. Constitutively associated with MPL and EPOR in hematopoietic cells.
Function	PTM:Arg-361 is dimethylated, probably to asymmetric dimethylarginine.,PTM:Thrombopoietin triggers the phosphorylation on tyrosine residues in a way that is dependent on MPL C-terminal domain.,sequence caution:Exon duplication.,similarity:Belongs to the ataxin-2 family.,subunit:Interacts with MPL/TPOR and EPOR and dissociates after ligand stimulation.,tissue specificity:Expressed at high levels in thymus, lymph node,

Nanjing BYabscience technology Co.,Ltd



spleen, fetal kidney and adult testis. Constitutively associated with MPL and EPOR in hematopoietic cells.,

Background

This gene encodes an ataxin type 2 related protein of unknown function. This protein is a member of the spinocerebellar ataxia (SCAs) family, which is associated with a complex group of neurodegenerative disorders. Several alternatively spliced transcripts encoding different isoforms have been found for this gene. [provided by RefSeq, Jul 2008],

matters needing attention

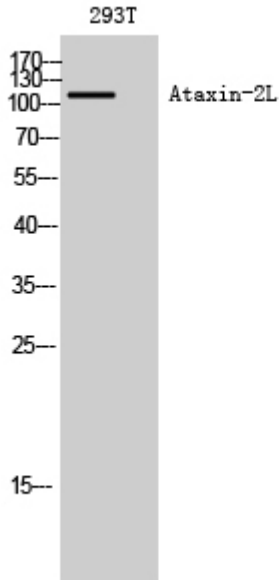
Avoid repeated freezing and thawing!

Usage suggestions

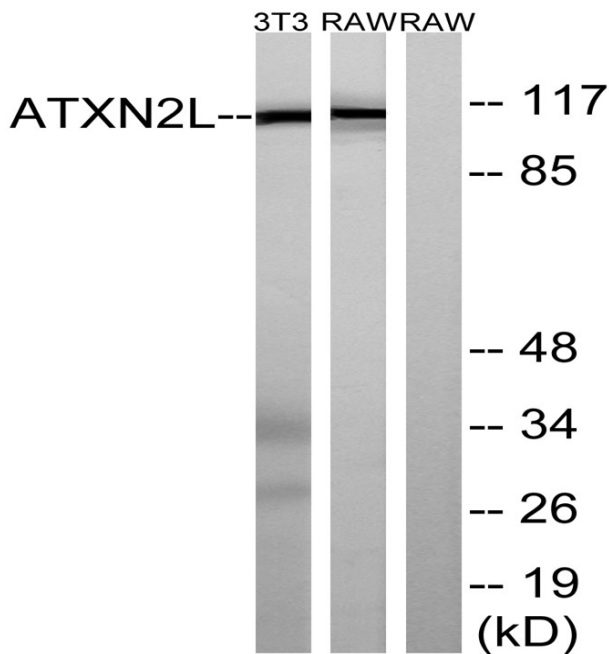
This product can be used in immunological reaction related experiments. For more information, please consult technical personnel.



Products Images



Western Blot analysis of 293T cells using Ataxin-2L Polyclonal Antibody diluted at 1:2000



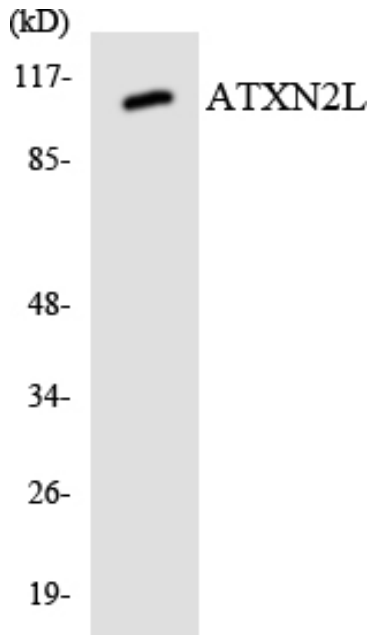
Western blot analysis of lysates from NIH/3T3 and RAW264.7 cells, using ATXN2L Antibody. The lane on the right is blocked with the synthesized peptide.

Nanjing BYabs science technology Co.,Ltd

网址: www.njbybio.com

官方热线: 025-5229-8998

监督电话: 15950492658



Western blot analysis of the lysates from 293 cells using ATXN2L antibody.