



# Cdc42EP3 Polyclonal Antibody

<b>Catalog No</b>	BYab-03752
<b>Isotype</b>	IgG
<b>Reactivity</b>	Human;Mouse;Rat
<b>Applications</b>	WB;ELISA
<b>Gene Name</b>	CDC42EP3
<b>Protein Name</b>	Cdc42 effector protein 3
<b>Immunogen</b>	Synthesized peptide derived from the N-terminal region of human Cdc42EP3.
<b>Specificity</b>	Cdc42EP3 Polyclonal Antibody detects endogenous levels of Cdc42EP3 protein.
<b>Formulation</b>	Liquid in PBS containing 50% glycerol, 0.5% BSA and 0.02% sodium azide.
<b>Source</b>	Polyclonal, Rabbit,IgG
<b>Purification</b>	The antibody was affinity-purified from rabbit antiserum by affinity-chromatography using epitope-specific immunogen.
<b>Dilution</b>	Western Blot: 1/500 - 1/2000. ELISA: 1/40000. Not yet tested in other applications.
<b>Concentration</b>	1 mg/ml
<b>Purity</b>	≥90%
<b>Storage Stability</b>	-20°C/1 year
<b>Synonyms</b>	CDC42EP3; BORG2; CEP3; Cdc42 effector protein 3; Binder of Rho GTPases 2; MSE55-related Cdc42-binding protein
<b>Observed Band</b>	26kD
<b>Cell Pathway</b>	Endomembrane system ; Peripheral membrane protein . Cytoplasm, cytoskeleton .
<b>Tissue Specificity</b>	Highly expressed in the heart and weakly in the brain.
<b>Function</b>	function:Probably involved in the organization of the actin cytoskeleton. May act downstream of CDC42 to induce actin filament assembly leading to cell shape changes. Induces pseudopodia formation in fibroblasts.,similarity:Belongs to the BORG/CEP family.,similarity:Contains 1 CRIB domain.,subunit:Interacts with RHOQ and CDC42, in a GTP-dependent manner, and with SEPT7.,tissue specificity:Highly expressed in the heart and weakly in the brain.,
<b>Background</b>	This gene encodes a member of a small family of guanosine triphosphate (GTP) metabolizing proteins that contain a CRIB (Cdc42, Rac interactive binding) domain. Members of this family of proteins act as effectors of CDC42 function. The encoded protein is involved in actin cytoskeleton re-organization during cell

**Nanjing BYabs science technology Co.,Ltd**



shape changes, including pseudopodia formation. A pseudogene of this gene is found on chromosome 19. Alternative splicing results in multiple transcript variants. [provided by RefSeq, Jul 2012],

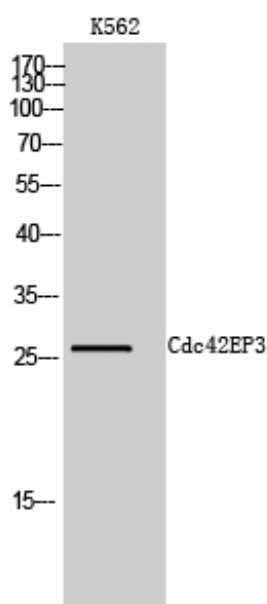
**matters needing attention**

Avoid repeated freezing and thawing!

**Usage suggestions**

This product can be used in immunological reaction related experiments. For more information, please consult technical personnel.

## Products Images



Western Blot analysis of K562 cells using Cdc42EP3 Polyclonal Antibody